

Are you prepared to deliver exceptional care in robotic surgery?

Reduce the learning curve and train to proficiency



Focused on assisting hospitals to better maximize their investment in robotic surgery, Mimic has over 15 years of experience providing tools and support for robotic surgery training and program management.

Mimic provides simulation software and hardware for training outside of the operating room or on the robot itself. Mimic's cloud-based data backup and advanced analytics gives your robotics committee real-time visibility of trainee performance and the ability to address quality, efficiency, safety, and risk.



Medical Simulator
INNOVACIÓN EN EDUCACIÓN

mimic®



FLEXVR™

Maximize your investment in robotic surgery



Our full complement of Consultancy Services is designed to promote proficiency in robotic surgery and to support your needs with managing robotic surgery programs by offering valuable insights and data-driven recommendations to develop complete programs, including best practices in the following areas:

- ▶ ADVANCED DATA ANALYTICS
- ▶ FULL ROBOTIC TRAINING PROGRAM DEVELOPMENT
- ▶ SPECIALTY SPECIFIC ROBOTIC TRAINING PROTOCOLS
- ▶ RESIDENCY PROGRAM ROBOTIC TRAINING PROTOCOLS
- ▶ CUSTOM CURRICULUM DEVELOPMENT
- ▶ CUSTOM ROBOTIC TRAINING COURSE DEVELOPMENT
- ▶ ONLINE PROFICIENCY MANAGEMENT



dV-TRAINER®
by mimic

Life-like simulation and training, when and where it's most effective, outside the OR

What's unique about Mimic's solutions for simulation and training?

The dV-Trainer®, FlexVR™, and Xperience Team Trainer™ simulators are designed to be used outside the OR for optimal access and training time. This allows surgeons to reach proficiency quickly and efficiently.



The **dV-Trainer** is a *da Vinci*® Surgeon's Console emulator that recreates the look and feel of operating with the *da Vinci*® robot. Because the dV-Trainer allows for training outside of the operating room, utilization is typically much greater than with the *Skills Simulator* (a.k.a. "the Backpack") due to greater accessibility. The dV-Trainer features a stereoscope, grips, foot pedals, and force effects that mimic the *da Vinci*® Surgeon's Console.

The **FlexVR** is a portable robotic simulator. Access is maximized as this simulator can be used anywhere, including in one's home. This platform is meant to be robot agnostic and will be upgradeable to new surgical robots when they become available. FlexVR can be unfolded and locked to almost any table within two minutes.

The **Xperience Team Trainer** is a laparoscopic simulator specifically designed for training the first assistant in robotic surgery. The system features realistic force feedback and adaptable port positioning to emulate common robot setups. The Xperience Team Trainer allows the first assist to train independently or in tandem with the console side surgeon.

The **Skills Simulator**, sold exclusively through Intuitive Surgical, converts a *da Vinci*® Surgeon's Console into a surgical simulator. Intuitive and Mimic released the *Si* and *Xi Skills Simulator* with 27 of Mimic's popular basic skills exercises. Additional content from Mimic is now available! Ask your Mimic or Intuitive sales rep about adding advanced Mimic simulation content to your *Skills Simulator* (version P6 or later).

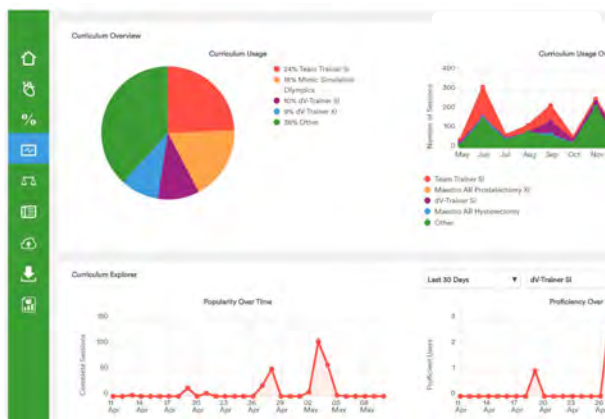
Xperience™
team trainer

Unique software solutions for skills assessment and knowledge sharing

Training to proficiency and beyond

Enhancing Mimic's innovative proficiency-based scoring system, the MScore Portal™ provides both administrators and users with an online solution giving them the ability to track training and progress, view individual and group reports, customize program curricula, and access additional learning materials including shared custom curricula from other well-known institutions.

MScore
Portal



The MSim platform

Mimic's MSim™ simulation software offers stunning 3D visualization and interaction across a wide variety of surgical skills exercises. With more than 100 exercises and multiple procedures available, MSim offers highly realistic training scenarios, customization of training protocols, and content that focuses on everything from basic robot control to advanced procedure specific training. MSim is the most used and most validated simulation software in the medical industry. Mimic's MSim software is common across the dV-Trainer, FlexVR, Xperience Team Trainer, and the Intuitive Skills Simulator.

Procedure-specific, augmented reality with Maestro AR

Advance clinical decision-making and procedural knowledge

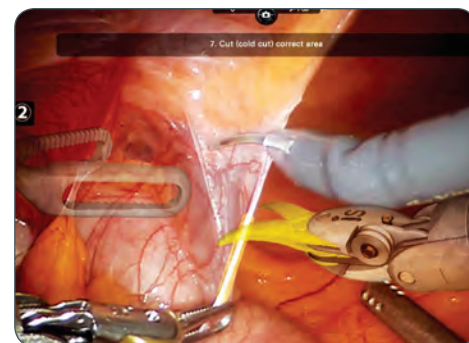
Exclusively available on the dV-Trainer and FlexVR, Maestro AR answers demand from the robotic community for procedure-specific simulation. Working on



the dV-Trainer or FlexVR, trainees can manipulate virtual 3D robotic instruments to interact with anatomical regions within augmented 3D surgical video. The current available procedure-specific modules include Prostatectomy for Si and Xi, Partial Nephrectomy, Hysterectomy, and Inguinal Hernia Repair. Each module features surgical case video and audio narration from a recognized expert.

Learning objectives and tasks:

- Identify anatomy
- Anticipate tissue retractions
- Predict regions for dissection
- Refine surgical skills



Watch a preview video and get more information:

www.MimicSimulation.com/MaestroAR

Maestro·AR™

Trust Mimic to guide your surgeons to proficiency

World-class Comprehensive Solutions

Mimic provides full service solutions from start to finish enhancing your investment in robotic surgery. Start with MimicMED's custom consulting services to design, develop, and implement new standards and protocols to bring your robotic surgeons and teams to proficiency quickly and to maximize your ROI. Then utilize FlexVR, dV-Trainer, and Xperience Team Trainer simulators for convenient hands-on skills training, procedure training, and skills maintenance outside the OR allowing increased access to training while the robot remains in use for revenue generating procedures. Finally, measure and track progress using our innovative proficiency-based scoring on MScore. Access and view individual and group reports remotely as well as enjoy additional learning materials via the online MScore Portal. With over fifteen years of experience in robotic surgery training, we are committed to providing a truly world-class training experience with a focus on guiding teams toward their individual proficiency and institutional ROI goals.

World-class Training Partnerships

Mimic Medical Education and Development (MimicMED) partners with institutions around the world to provide robotic surgery skills training programs. Headquartered at the Florida Hospital Nicholson Center in Celebration, Florida, residents, fellows, and surgeons of all experience levels can earn CME credits during hands-on training courses. In addition to Florida Hospital, MimicMED partners with the European Association of Urology (EAU), STAN Institute in Nancy, France, and UPMC Center for Advanced Robotics Training (CART).

MimicMED provides options for:

- One-on-one or group simulation instruction
- Curriculum development assistance
- Research support and collaboration

World-class Customer Support

We strive to create the best possible value for our customers, and are passionate about helping you get the most out of your simulation training program. When you invest in Mimic's simulation products, you become part of the largest network of visionary robotic surgery simulator users in the world. We actively encourage and facilitate collaboration and learning between our forward-thinking surgeons, educators, and institutions. Within the network, users share best practices, implementation strategies, and training curricula. As part of our customer support package, we offer:

- On-site installation by skilled service technicians
- Training on how to use and troubleshoot simulators
- Easily accessible technical support via phone and email
- Extended service plans for maximum protection and utilization of our training solutions

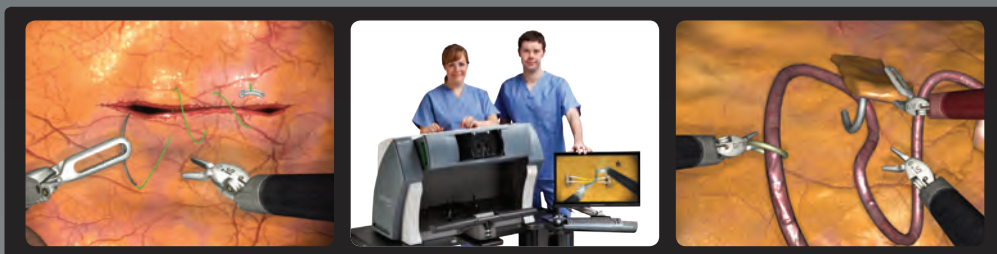
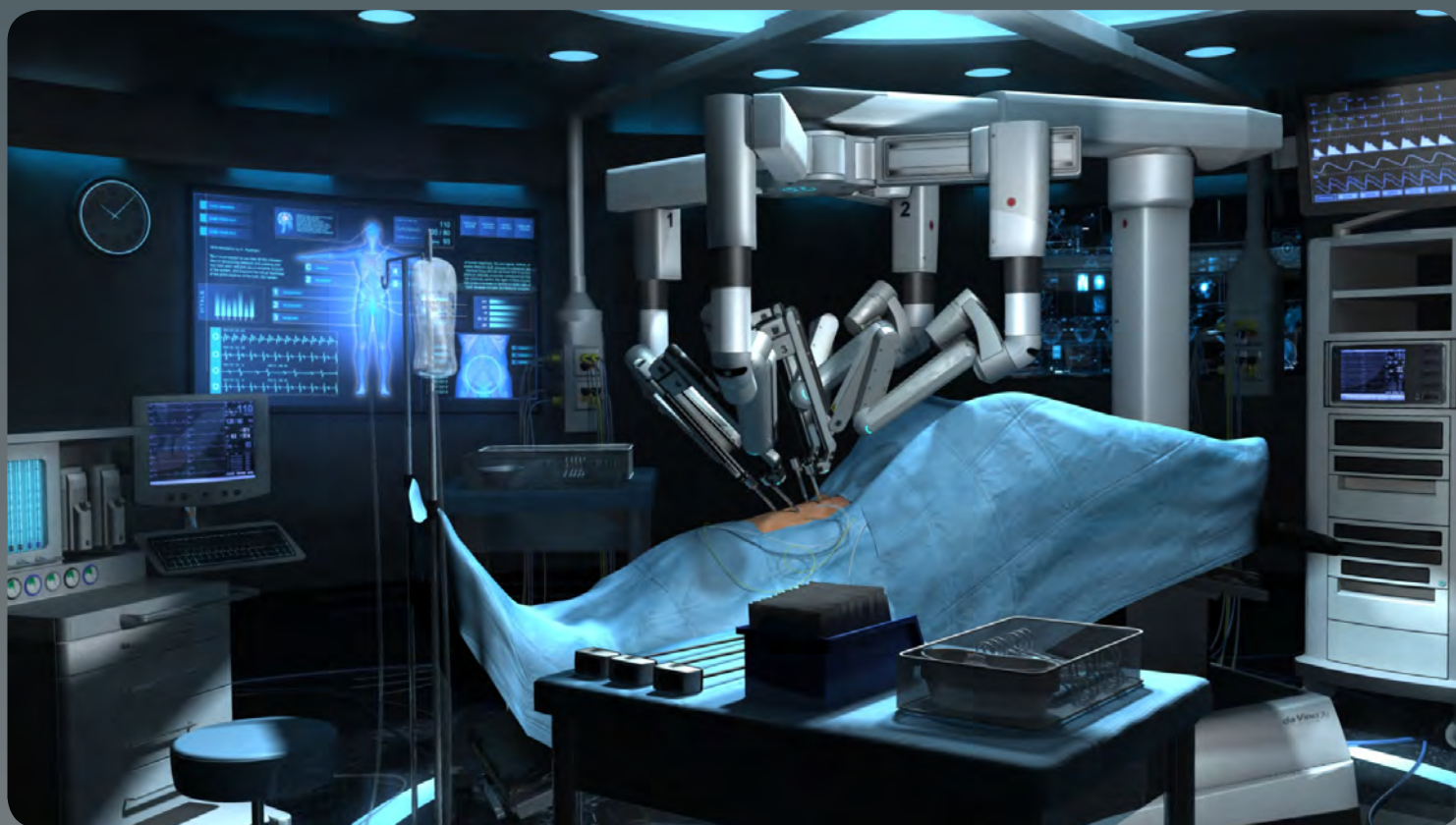


Earn CME Credits with MimicMED!

Browse upcoming courses and register

- ▶ To view course calendar: www.MimicMED.com
- ▶ Contact MimicMED:
Phone: (800) 918-1670 x 1195
Email: training@MimicMED.com

Proficient surgeons deliver quality, efficient care



 www.MimicSimulation.com



Medical Simulator
INNOVACIÓN EN EDUCACIÓN

MEDICAL SIMULATOR Spain
Ctra. Pozuelo-Majadahonda Km. 1,8
28223 Pozuelo de Alarcón - Madrid
T (+34) 902 196 788 | (+34) 91 382 08 88
F (+34) 91 381 98 80
info@medical-simulator.com
www.medical-simulator.com

MEDICAL SIMULATOR Portugal
Av. Duque de Ávila, 141 1º-Dto
1050-081 - Lisboa (Portugal)
(+34) 91 382 08 88
F (+34) 91 381 98 80
info@medical-simulator.com
www.medical-simulator.com

