



CAEAresAR

Augmented reality training for emergency patient care

Elevate emergency care training with CAE AresAR, an engaging augmented reality solution that helps learners clearly visualize the physiology and accelerate the training to manage life-threatening medical emergencies.

Powered by the Microsoft HoloLens 2, CAE AresAR can be used as a standalone application with a holographic manikin or can be integrated with the CAE Ares manikin to enable continuum of learning.



Accelerate learning and retention with complete understanding of physiology in emergency scenarios



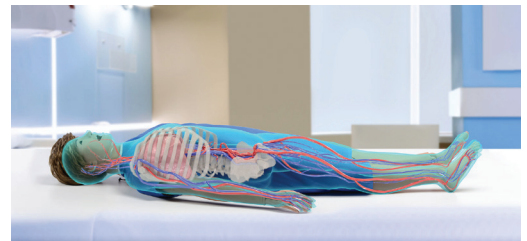
Improve skills retention with self-paced and repeatable learning



Save precious faculty time with self-directed learning



Deliver training with minimal space requirements



SCEs available on AresAR:

- Myocardial Infarction
- Pulmonary Embolism
- Sepsis
- Stroke
- Subdural Hematoma
- Tension Pneumothorax

© 2020 CAE Healthcare 626-0520 Rev7



Medical Simulator
INNOVACIÓN EN EDUCACIÓN

Medical Simulator Spain

Ctra. de Pozuelo a Majadahonda Km. 1.800
28223 Pozuelo de Alarcón | Madrid | Spain
T (+34) 91 382 08 88
F (+34) 91 381 98 80

www.medical-simulator.com

info@medical-simulator.com

@Simulacion_medi

medical-simulator

medicalsimulator

@medical_simulator