

# VETERINARY



**Medical Simulator**  
INNOVACIÓN EN EDUCACIÓN

**Medical Simulator Spain**  
Ctra. de Pozuelo a Majadahonda Km. 1800 28223  
Pozuelo de Alarcón | Madrid | Spain T (+34) 91 382 08  
88 | F (+34) 91 381 98 80

[www.medical-simulator.com](http://www.medical-simulator.com)  
[info@medical-simulator.com](mailto:info@medical-simulator.com)





**Life/form® Basic Sanitary CPR Dog**  
**REF: LF01156U**

- Canine basic life support in the same user-friendly trainer as **Life/form®** Advanced Sanitary CPR Dog
- Perform CPR and intubation practice
- Manual femoral pulse
- Includes 10 nosepieces, 3 disposable airways, 6.0 mm endotracheal tube, lubricant, syringe, and soft carry case
- 5-year warranty
- Sh. wt. 15 lbs. (6.80 kg).

**LF01156**

**Life/form® Advanced Sanitary CPR Dog**  
**REF: LF01155U**

- Canine advanced life support in 1 user-friendly trainer
- Specially designed airway provides each learner with a disposable nosepiece and 1-way valve
- Visual feedback indicated with electronic light box for hand position, compression depth, and endotracheal ventilation pressure
- Visible chest rise with mouth-to-snout ventilation (disposable face shields recommended, not included)
- Practice blood draws and IV infusions on the IV foreleg
- Manual femoral pulse
- Includes 10 disposable nosepieces, 3 disposable lower airways, 6.0 mm endotracheal tube, lubricant, 12 cc syringe, towelette, butterfly set, pint bottle with blood powder, two 500 ml fluid supply bags, control box with AC adapter, 9V battery, and soft carry case
- 5-year warranty
- Sh. wt. 25 lbs. (11.34 kg).

**LF01155**

**Replacement Veins\***

- Pkg. of 3
- Sh. wt. 0.19 lbs. (0.09 kg).

**LF01179**

**Disposable Lower Airways\***

- Pkg. of 10
- Sh. wt. 1.75 lbs. (0.79 kg).

**LF01158**

**Replacement Muzzles\***

- Pkg. of 6
- Sh. wt. 1.25 lbs. (0.57 kg).

**LF01157**

**Disposable Nosepieces\***

- Pkg. of 10
- Sh. wt. 0.56 lbs. (0.25 kg).

**LF01164**

**TUTOR MS —  
Data Selector (Sounds)**

- Reproduces canine heart and breath sounds with the advantage of instantly changing between sounds for comparisons
- Place a real stethoscope on the pliable Sounder pads for a lifelike listening experience
- Connect up to 15 Sounders for a classroom training session
- LED indicator lights differentiate between systolic and diastolic events
- Volume control on the battery-operated unit
- Includes 2 Sounders
- Sounds modules sold separately below
- Sh. wt. 1.50 lbs. (0.68 kg).

**SB28954**



**Canine Heart Sounds Module**

- |                         |                            |
|-------------------------|----------------------------|
| 1) Atrial Fib           | 6) Pulmonic Stenosis       |
| 2) Mitral Regurgitation | 7) Respiratory Crackle     |
| 3) Mitral Valve Click   | 8) SAS                     |
| 4) Normal               | 9) Miral Regurgitation VPC |
| 5) PDA                  | 10) VSD                    |

Sh. wt. 0.19 lbs. (0.09 kg).

**SB48100**

**Canine Breath Sounds Module**

- |                         |                            |
|-------------------------|----------------------------|
| 1) Tracheal             | 8) Stridor                 |
| 2) Vesicular            | 9) Cavernous               |
| 3) Broncho-Vesicular    | 10) Crackles, Med. to Fine |
| 4) Bronchial            | 11) Crackles, Rhonchi      |
| 5) Wheezes              | 12) Crackles, Coarse       |
| 6) Monophonic Wheeze    | 13) Pulmonary Edema        |
| 7) Pleural Friction Rub | 14) Puppy                  |

Sh. wt. 0.19 lbs. (0.09 kg).

**SB48101**

**Canine Heart & Breath Sounds Complete Set**

- Includes 1 of each sound module listed above
- Tutor MS Data Selector needed to use these sound modules
- Sh. wt. 0.50 lbs. (0.23 kg).

**SB48099**



**Life/form® Canine IV Leg\* REF: LF01016**

- Simulates the left foreleg of a medium-sized dog in the sternal recumbent position
- 2 interchangeable fur sleeves to simulate normal fur and shaved fur
- Replaceable vein system allows for blood draws and IV infusions
- Practice bandaging and restraint assistance
- Includes portable storage box with built-in IV pole, blood powder, syringe, IV catheter, and 2 fluid supply bags
- 5-year warranty

Sh. wt. 2.50 lbs. (1.13 kg).

**LF01016**

**Replacement Sleeves\***

- Set of 2 includes 1 sleeve with normal fur and 1 "shaved" sleeve
- Sh. wt. 0.31 lbs. (0.14 kg).

**LF01016(A)**

**IV Catheters\***

- Set of 3
- Sh. wt. 0.31 lbs. (0.14 kg).

**LF01016(B)**

**Replacement Vein Tubing\***

- Set of 3
- Sh. wt. 0.31 lbs. (0.14 kg).

**LF01016(C)**



\*Manufactured using a quality management system certified as being in conformity with ISO 9001 and ISO 13485.

## Simulaids CasPeR the CPR Dog

REF: PP05000

- Provides training in mouth-to-snout resuscitation with individual-use, disposable airway bags
- Individual disposable shield/lung bags eliminate cross contamination between students and the need to disinfect the manikin after every use
- Use to teach proper hand placement for compressions, depth of compressions, airway maintenance, femoral pulse check, and adequate ventilation
- Airways are changed quickly and involve no tools

- Instructor friendly
  - No disinfecting
  - Realistic features
  - Femoral pulse
- Sh. wt. 15 lbs. (6.80 kg).

**100-5000**

### CasPeR Lungs

- Pkg. of 100
- Sh. wt. 2.25 lbs. (1.02 kg).

**100-5001**



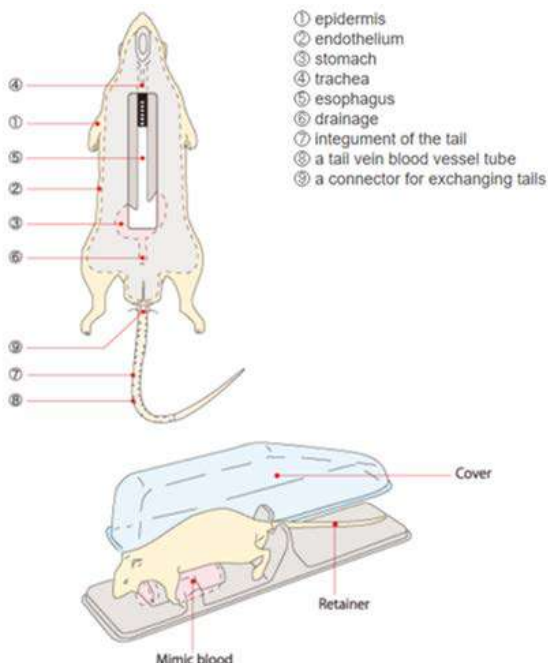
## KOKEN Rat REF: LM046A Rat model for use in the training of animal testing techniques.

When various experimental procedures are conducted using laboratory animals, it is important to restrain the animal properly and to develop techniques that will meet the necessary experimental objectives. When an inexperienced laboratory animal handler holds a rat for the first time, there is a risk that the handler may be bitten or may accidentally drop the animal. Therefore, KOKEN has developed the KOKEN Rat as a training tool. The beginner can learn the techniques of proper holding of the animal, peroral feeding, tail vein injection and blood collection, and endotracheal intubations.

### Features

- The pharynx, larynx, trachea, stomach, and tail vein are anatomically correct and replicated in the rat model.
- Our original silicone and soft vinyl chloride materials are used to achieve a texture similar to that of a live rat.
- When placed in the standard position, the resulting posture is the same as that of a living rat.
- Dosage in the stomach can be confirmed through the transparent section of the abdomen.
- Needle insertion into the tail vein can be confirmed by the reflux of imitation blood.

### Structure



### Components

Main body: 1  
Tail: 1  
Retainer with cover: 1  
Simulated blood (50cc): 1

### Specifications

Strain: SD  
Sex: Male  
Age: 9 weeks  
Body length [tail length]: 21 cm [19 cm]

### Spares

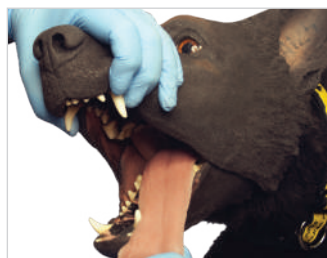
LM-046A2 Tail: 1  
LM-046A3 Simulated blood (50cc): 1

### Practical Training

- Retention
- Peroral dosage
- Tail intravenous dosage and blood collection
- Endotracheal intubation



# K9 HERO



El TraumaFX® Canine Medical Trainer (K9 HERO) es un entrenador médico de cuerpo entero para operativos caninos de emergencias, adiestradores de perros de trabajo militares (WMD), veterinarios y técnicos veterinarios. Diseñado en colaboración con el Departamento de Defensa (DoD), el K9 HERO es un entrenador médico de vanguardia para principiantes y experimentados por igual. Todos los puntos de formación son realistas para reproducir el aspecto, la sensación y la función de los procedimientos médicos reales. La cabeza del simulador ha sido esculpida a mano para imitar a un belga malinois, y el exterior está recubierto de piel sintética que no se mancha. K9 HERO permite a los alumnos realizar tareas críticas para salvar vidas como el mantenimiento de una vía aérea, la descompresión con aguja/toracocentesis, la hemostasia, la inserción intravenosa, la infusión intraósea (I/O), la cardiopulmonar, reanimación (RCP), traqueotomía y vendaje.

NÚMERO DE PRODUCTO	KGS-TFX-K9-HERO-1	
NSN #	6509016597165	
TAMAÑO	Length 42" (excludes tail)	
PESO	LLENO	50 lbs
	VACÍO	48 lbs

ALIMENTACIÓN	Una (1) batería de iones de 12V	
DEPÓSITO DE SANGRE	~500 ml	
TAMAÑO DE LA CAJA	51"x26"x12"; 115 lbs	

## CONTRATO DE VEHÍCULOS

GSA	GS-07F-063DA
DLA ECAT	SPE2DH-18-D-0008
PEO STRI TATT II	W900KK-19-D-0005
PEO STRI VPSS	W900KK-18-D-0012
NATO Logistics Stock Exchange	LB-KGS-01N



## BENEFICIOS CLAVE DEL K9 HERO

<ul style="list-style-type: none"> <li>▶ Movimiento esquelético anatómico completo y realista</li> <li>▶ 8 puntos de formación de intervención</li> <li>▶ Punto de entrenamiento intravenoso con señal de flash</li> <li>▶ Punto de descompresión/toracocentesis con aguja permite la extracción de aire, líquido o ambos</li> <li>▶ Pulsos femorales ajustables por control remoto</li> <li>▶ Pata lacerada reutilizable para el entrenamiento de sutura y vendaje</li> <li>▶ Vía aérea realista con apertura de mandíbula y lengua biomiméticas para el entrenamiento de intubación y ventilación con bolsa de forma adecuada (acepta tubos de 10-12mm)</li> <li>▶ Subida y bajada del tórax con una intubación correcta (subida y bajada del estómago si se coloca incorrectamente en el esófago)</li> <li>▶ Compresiones torácicas de RCP con resistencia</li> </ul>	<ul style="list-style-type: none"> <li>▶ Kit opcional de heridas en la boca con lesiones en la boca y la lengua con obstrucción de la garganta</li> <li>▶ Reanimación boca a boca</li> <li>▶ Punto de entrenamiento de E/S tibial infusible con tapón óseo reutilizable</li> <li>▶ Herida safena que requiere una presión adecuada para ocluir la hemorragia (el éxito/fracaso se muestra inmediatamente en el mando a distancia)</li> <li>▶ Punto de entrenamiento de traqueotomía con tejido de varias capas</li> <li>▶ Aspecto y tacto realistas con un peso de ~50 lbs</li> <li>▶ Pelaje hidrofóbico con calcetines de piernas lavables</li> <li>▶ Lugar de inserción del microchip</li> <li>▶ Orejas flexibles opcionales</li> </ul>
--------------------------------------------------------------------------------------------------------------------------------------------------------------------------------------------------------------------------------------------------------------------------------------------------------------------------------------------------------------------------------------------------------------------------------------------------------------------------------------------------------------------------------------------------------------------------------------------------------------------------------------------------------------------------------------------------------------------------------------------------------------------------------------------------------------------------------------------------------------------------	-------------------------------------------------------------------------------------------------------------------------------------------------------------------------------------------------------------------------------------------------------------------------------------------------------------------------------------------------------------------------------------------------------------------------------------------------------------------------------------------------------------------------------------------------------------------------------------------------------------------------------------------------------------------------------------------------------------------------------------------





# K9 DIESEL

Advanced Canine Medical Trainer.

## PRODUCT SPECIFICATIONS

PRODUCT #	KGS-TFX-K9-DSL-1		NSN	6910016758251
DIMENSIONS	LENGTH			
	42in - (Excludes Tail)   106.7cm			
WEIGHT	FULL - 57lbs / 25.9kg		EMPTY - 55lbs / 24.9kg	
POWER SUPPLY	One (1) 18V Li-ion battery		BLOOD RESERVOIR	-500 ml
CASE DIMENSIONS	62"x26"x16"; 145lbs.   157.5cm x 66cm x 40.6cm; 65.8kg			

## CONTRACT VEHICLES

GSA	GS-07F-063DA
DLA ECAT	SPE2DH-18-D-0008
PEO STRI TATT II	W900KK-19-D-0005
PEO STRI VPSS	W900KK-18-D-0012
NATO Logistics Stock Exchange	LB-KGS-01N

## K9-DIESEL

The **TraumaFX® Advanced Canine Medical Trainer (K9 Diesel)** is a full-body simulator for Operational Canine First Responders, Military Working Dog (MWD) handlers, Veterinarians, and Veterinary Technicians. Designed in partnership with the Department of Defense (DoD), **K9 Diesel** is a state of the art skills trainer that includes active breathing, audio queues and over 28 different features and medical intervention sites. All training sites are designed to replicate the look, feel, and function of actual medical procedures. Interchangeable limbs and injuries provide greater flexibility to vary wound patterns. K9 Diesel is the most advanced K9 simulator available and allows learners to perform a wide range of critical life-saving tasks with an incredibly realistic experience.



## KEY BENEFITS

- ▶ Lifelike, full anatomical skeletal motion
- ▶ Realistic airway with adjustable breathing - from slow (10 bpm) to panting (120 bpm)
- ▶ Intubation with chest rise and fall (stomach rise and fall if incorrectly placed in esophagus)
- ▶ Interchangeable front and rear limbs: includes front legs with adjustable carpal fractures, two uninjured rear legs, and an amputated left rear leg with pressure-responsive bleeding
- ▶ Audio queues including barking, whimpering, growling, stertor, and stridor
- ▶ Cephalic IV training (bilateral) with flash cue
- ▶ Needle decompression/thoracocentesis with air release (bilateral)
- ▶ Femoral pulses (bilateral), strength and speed adjustable via remote control (50-170 bpm)
- ▶ Reusable lacerated paw for suture and bandage training
- ▶ Gastric Dilatation Volvulus decompression (GDV) site (bloat)
- ▶ CPR chest compressions with resistance
- ▶ Mouth-to-snout resuscitation
- ▶ Infusible (bilateral) Tibial and Humeral intraosseous (I/O) training with reusable bone plugs
- ▶ Intestinal evisceration
- ▶ Packable bleeding junctional wounds (bilateral)
- ▶ Moveable, simulated GSWs for chest seal training
- ▶ Tracheostomy training site with multi-layered tissue
- ▶ Realistic look and feel with a weight of ~60 lbs
- ▶ Hydrophobic fur with washable leg socks
- ▶ Easy care and maintenance
- ▶ Optional limbs/accessories include lower amputation on front leg (left), resettable compound fracture rear leg (right), mouth wound kit with injured mouth and tongue with throat blockage, floppy ears
- ▶ Wireless remote control with real-time sensor data and programmable/customizable scenarios

# EQUINE PALPATION COLIC SIMULATOR

WITH EQUINE NECK VENIPUNCTURE W/  
INTRAMUSCULAR INJECTION





# EQUINE PALPATION/ COLIC SIMULATOR

## WITH EQUINE NECK VENIPUNCTURE & INTRAMUSCULAR INJECTION

### Horse Body Features

- ❖ Modeled as a standard 15 hand Quarter Horse
- ❖ Steel reinforced epoxy/fibreglass construction with water resistant components for ease of cleaning
- ❖ 1.5m at the shoulder and 2.25m from nose to tail. Widest point is 0.6m
- ❖ 5 section inflatable latex GI Tract. Right and left ventral colon, right and left dorsal colon, and cecum. 3m section of small intestine with mount
- ❖ Spleen and left kidney attached with the renosplenic ligament. Palpable aorta capable of simulating a pulse
- ❖ Palpable soft uterus with cervix, urethra and broad ligament
- ❖ 3 sets of interchangeable ovaries; anestrus, estrus, and estrus with follicles
- ❖ Abdominocentesis function with replaceable pad; fluid reservoir and palpable linea
- ❖ Comes standard in black
  - Custom markings available upon request
- ❖ Artificial, removable tail
- ❖ Soft, durable perineum panel
- ❖ Replica polyurethane pelvis
- ❖ Inflatable vinyl rectum
- ❖ Recycled plastic base



**The Equine Neck Venipuncture/IM Injection is removable from the horse body and may be used as a stand alone unit. Can be purchased separately. Features include:**

- ❖ Jugular venipuncture with palpable veins
- ❖ Easily replaceable latex vein tubing that can endure multiple punctures; includes 5 sets of veins
- ❖ Mechanical system allows the veins to be pressurized
- ❖ Gravity fed, no pump required
- ❖ Long lasting, easily removable, washable, replaceable hide covering with mane
- ❖ IM site that can endure multiple punctures and accept fluid injections
- ❖ Soft silicone head with flexible ears and well rendered anatomy illustrates facial injection sites and accepts a bridle
- ❖ Rolling Stand, adjustable for height, rostral tilt, and 90 degree rotation

### Replaceable Parts

- Abdominocentesis pad • GI Tract • Perineum Panel with Equine Uterus • Ovaries
- Spleen • Kidney • Aorta • Veins • Intramuscular Pads • Mane and Hide

***Please note that certain components are natural latex rubber.***

*Also available without the Rolling Stand.*

*Includes a removable limb to allow compatibility with our Equine Palpation Radiology Limb, which can be added for an additional cost not including the Equine Limb Stand.*

# EQUINE NECK VENIPUNCTURE & INTRAMUSCULAR INJECTION



- ❖ Jugular venipuncture with palpable veins
- ❖ Easily replaceable latex vein tubing that can endure multiple punctures; includes 5 sets of veins
- ❖ Mechanical system allows the veins to be pressurized
- ❖ Long lasting, easily removable, washable, replaceable hide covering with mane
- ❖ IM site that can endure multiple punctures and accept fluid injections
- ❖ Soft silicone head with flexible ears and well rendered anatomy illustrates facial injection sites and accepts a bridle
- ❖ Rolling Stand, adjustable for height, rostral tilt, and 90 degree rotation

## Replaceable Parts

Veins • Intramuscular Pads • Mane • Hide Covering

*Please note that certain components are natural latex rubber. Care and maintenance instructions included. Not recommended for IV catheterization.*



# EQUINE RADIOLOGY LIMB

## RIGHT DISTAL FORELIMB

- ❖ Features a fully articulated skeleton
- ❖ The bone material is radiodense allowing for visualisation using radiography techniques
- ❖ Allows movement at the carpus and fetlock joints
- ❖ Has a soft silicone skin for palpation
- ❖ Ability to attach the limb onto all new VSI Equine Palpation Colic Simulators that feature a removable distal limb, now standard on the full horse model
- ❖ Includes stand for clamping to a table



*Available without the stand*

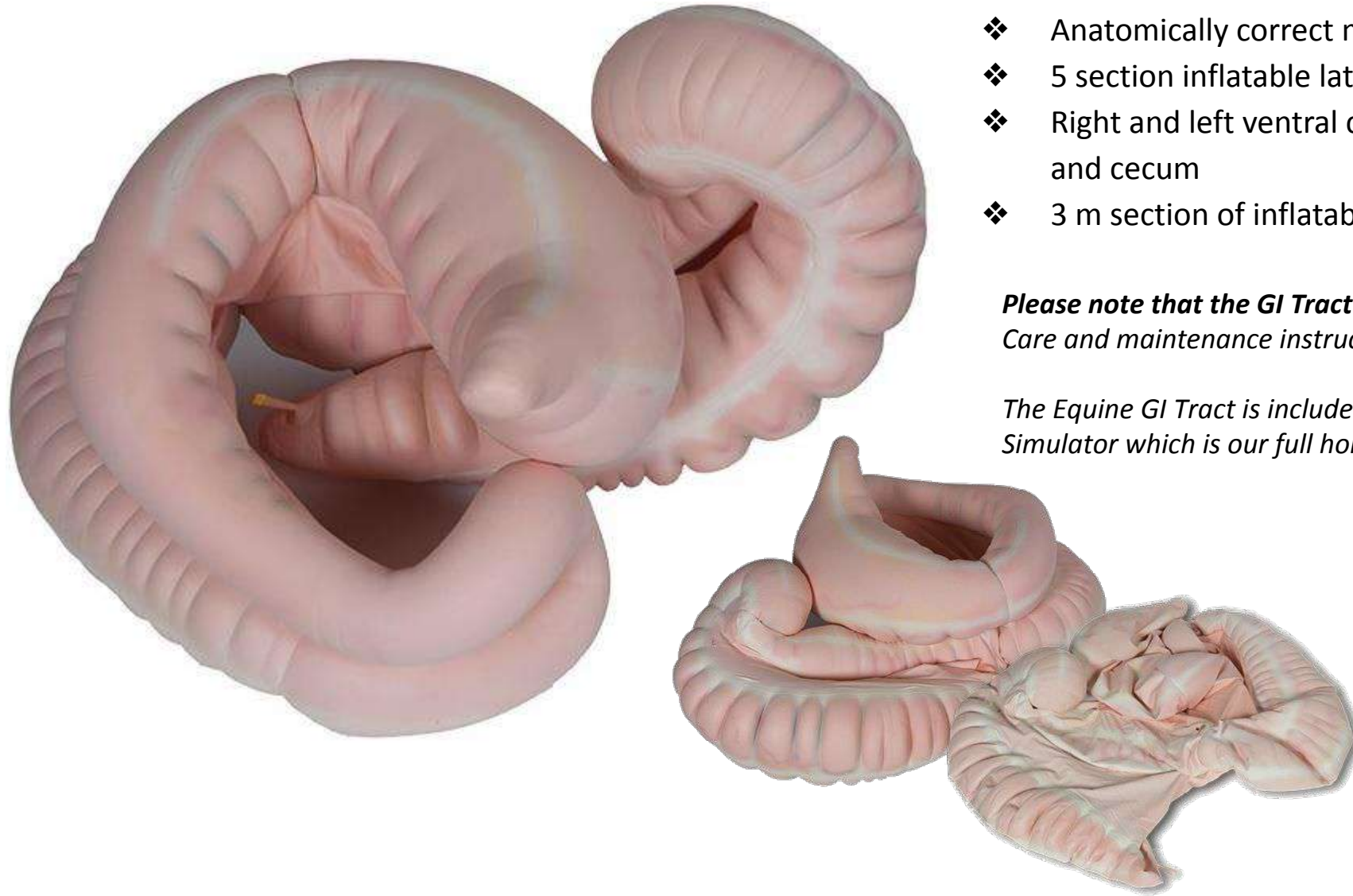
# EQUINE THERIOGENOLOGY MODEL



- ❖ Rear portion of our Quarter Horse model constructed in epoxy/fiberglass
- ❖ Soft, durable perineum panel
- ❖ Inflatable vinyl rectum with pump
- ❖ Artificial, removable tail.
- ❖ Polyurethane pelvis replica
- ❖ Palpable soft uterus with cervix, urethra, and broad ligament
- ❖ 3 sets of easily interchangeable ovaries; anestrus, estrus, and estrus with follicles with storage case



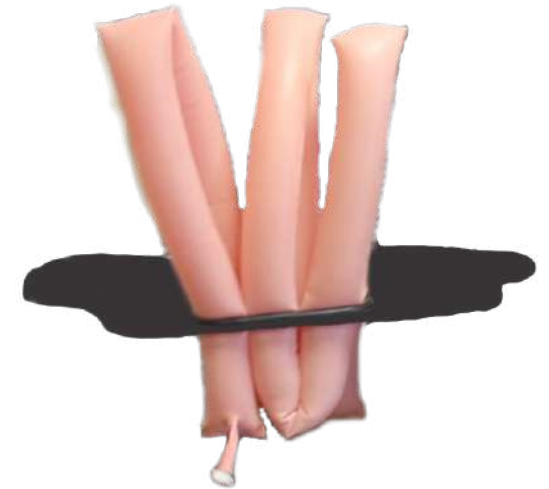
# EQUINE GI TRACT



- ❖ Anatomically correct model
- ❖ 5 section inflatable latex GI tract with pump
- ❖ Right and left ventral colon, right and left dorsal colon, and cecum
- ❖ 3 m section of inflatable latex small intestine included

***Please note that the GI Tract is made with natural latex rubber. Care and maintenance instructions included.***

*The Equine GI Tract is included in our Equine Palpation / Colic Simulator which is our full horse simulator*





# HOLSTEIN MODEL DYSTOCIA SIMULATOR



- ❖ Modeled as a True Type Canadian Holstein Friesen
- ❖ Steel reinforced epoxy/fiberglass construction, with water resistant components throughout for ease of cleaning
- ❖ Recycled plastic base
- ❖ 1.57m at the shoulder and over 2.80m from nose to tail, 1m at widest point.
- ❖ Matching Holstein Calf included
- ❖ Inflatable calf air bed support system
- ❖ Clear vinyl uterine bag
- ❖ Soft, durable perineum panel
- ❖ Soft removable tail
- ❖ Functional udder with milk tank; ability to simulate mastitic milk and can be introduced in any quadrant
- ❖ Replica polyurethane pelvis
- ❖ Padded fetal extractor, obstetric chain and head snare
- ❖ Landing mat provided to prevent damage to calf

## Replaceable Parts

Birth Perineum Panel • Uterine Bag • Tail • Teats • Calf

*The Holstein Dystocia Model is also compatible with our **Bovine Theriogenology Uterus Set***

# HEREFORD MODEL DYSTOCIA SIMULATOR



- ❖ Steel reinforced epoxy/fiberglass construction, with water resistant components throughout for ease of cleaning.
- ❖ 1.36m at the shoulder and over 2.44m from nose to tail, and 0.8m at widest point
- ❖ Matching Hereford calf included
- ❖ Inflatable calf air bed support system
- ❖ Clear vinyl uterine bag
- ❖ Soft, durable perineum panel
- ❖ Soft removable tail
- ❖ Functional udder with milk tank; ability to simulate mastitic milk and can be introduced in any quadrant
- ❖ Replica polyurethane pelvis
- ❖ Padded fetal extractor, obstetric chain and head snare
- ❖ Landing mat provided to prevent damage to calf

## Replaceable Parts

Birthing Perineum Panel • Uterine Bag • Tail • Teats • Calf

*The Hereford Dystocia Model is also compatible with our **Bovine Theriogenology Uterus Set***

# COMPACT MODEL DYSTOCIA SIMULATOR



- ❖ Tabletop simulator that is modeled as a Hereford
- ❖ Steel reinforced epoxy/fiberglass construction, with water resistant components throughout for ease of cleaning.
- ❖ 0.65m tall and 1.3 long, tail to bulkhead and 0.8m at widest point
- ❖ Matching calf included
- ❖ Inflatable calf air bed support system
- ❖ Clear vinyl uterine bag
- ❖ Soft, durable perineum panel
- ❖ Soft removable tail
- ❖ Replica polyurethane pelvis
- ❖ Padded fetal extractor, obstetric chain and head snare
- ❖ Landing mat provided to prevent damage to calf



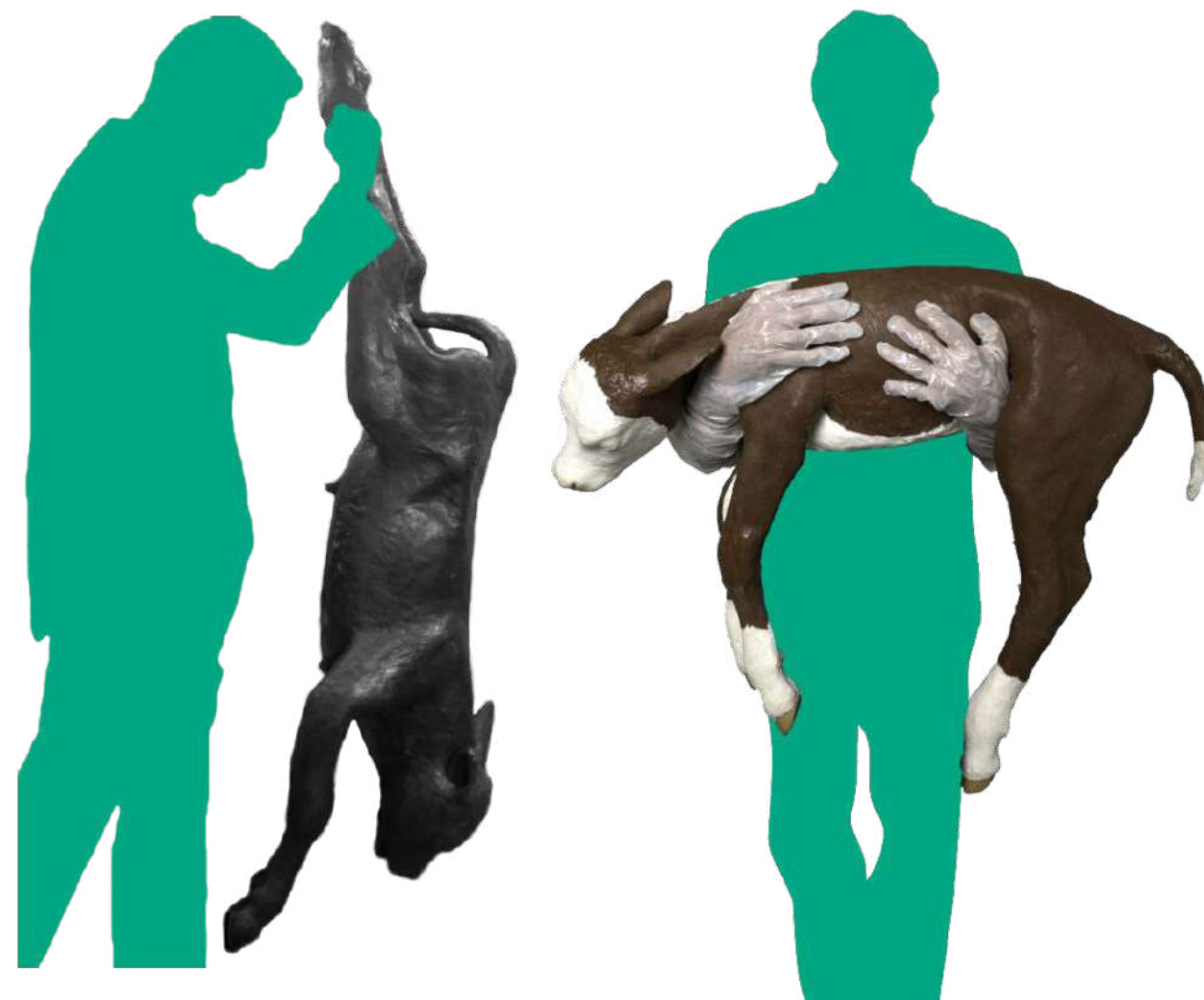
## Replaceable Parts

Birth Perineum Panel • Uterine Bag • Tail • Calf

*The Compact Dystocia Model is also compatible with our **Bovine Theriogenology Uterus Set***



# DYSTOCIA CALF MODEL



- ❖ Fully articulated steel skeleton, with ribcage, vertebrae, pelvis and spine
- ❖ Realistic movement; durable and flexible skin and tail
- ❖ Skull with jaw, teeth, soft palate
- ❖ Esophagus and palpable anus
- ❖ Reinforced ears and forelegs with durable hooves for chaining
- ❖ Realistic 22.7kg (50 lb) weight
- ❖ Available in 4 breeds colours:
  - Hereford, Holstein, Black and Red Angus
- ❖ Custom breeds available at an additional cost



*The Dystocia Calf Model is included with our Hereford Dystocia, Holstein Dystocia and Compact Dystocia Simulators*

# BOVINE THERIOGENOLOGY MODEL



- ❖ Rear portion of our Hereford model constructed in epoxy/fiberglass
- ❖ Constructed with pelvis, soft perineum palpation panel, inflatable vinyl rectum, and flexible tail.
- ❖ Includes the **Bovine Theriogenology Uterus Set (5)**:
  - Open Cow, suitable for AI training
  - Heifer, suitable for AI training
  - 45 days of pregnancy, with slightly enlarged horn and amniotic vesicle
  - 60 days of pregnancy, with uterine slip and fetus
  - 90 days of pregnancy, with uterine slip, fetus, and placentomes
- ❖ All models have representations of the cervix, broad ligament, and ovaries
- ❖ Various representations of ovaries displaying different stages of follicles and corpus luteum

## Replaceable Parts

Palpation Perineum Panel • Tail • Each Uterus

*The Bovine Theriogenology Uterus Set is also sold separately and are compatible in our Dystocia Models with the purchase of the Palpation Panel Assembly*

***Please note that these products are made with natural latex rubber***

# BOVINE THERIOGENOLOGY UTERUS SET (5)

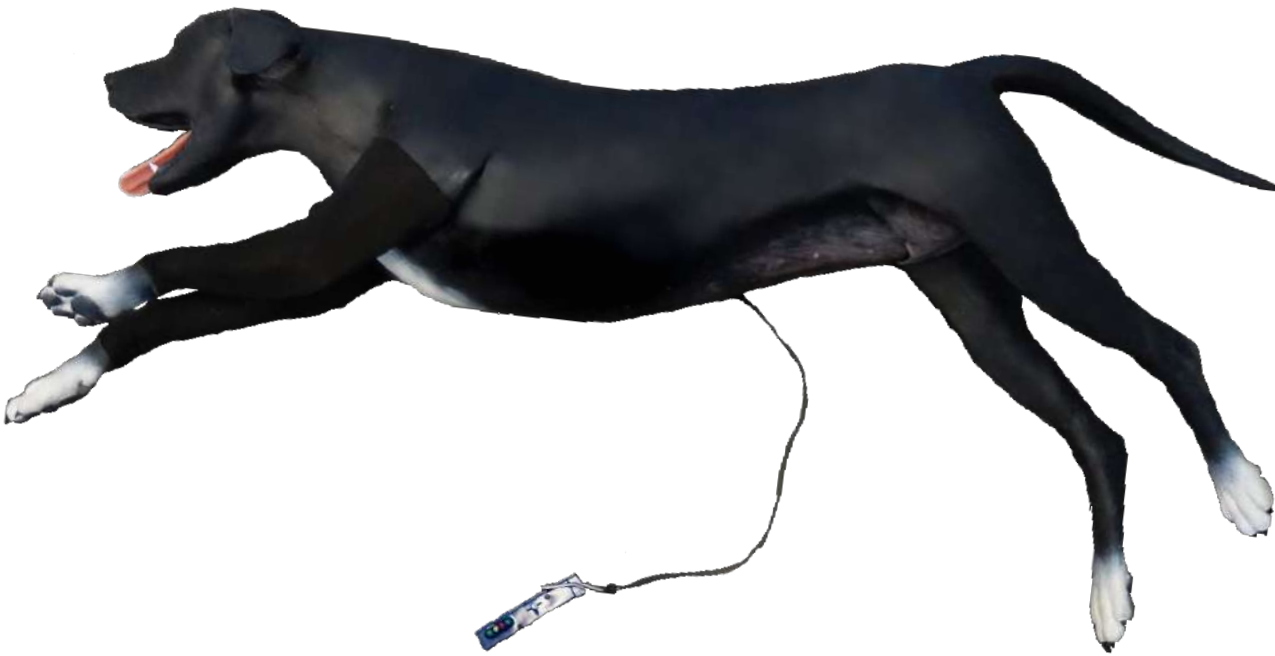


- ❖ **Open Cow**
  - suitable for AI training
- ❖ **Heifer**
  - suitable for AI training
- ❖ **45 Days of Pregnancy**
  - With slightly enlarged horn and amniotic vesicle
- ❖ **60 Days of Pregnancy**
  - With uterine slip and fetus
- ❖ **90 Days of Pregnancy**
  - With uterine slip, fetus, placentomes
- ❖ **Bovine Palpation Panel Assembly**
  - Enables compatibility of our Bovine Uterus in any VSI Dystocia Model
  
- ❖ All models have representations of the cervix, broad ligament, and ovaries
- ❖ The **Uterus Set** includes four different representations of ovaries displaying different stages of follicles and corpus luteum. Each uterus sold separately does not include ovaries; they are available for purchase as a set
- ❖ **Bovine Ovaries Set**

*Please note that these products are made with natural latex rubber*



# CANINE BASIC LIFE SUPPORT SIMULATOR



- ❖ Fully articulated steel skeleton with ribcage, and separated toes
- ❖ Representation of trachea and esophagus which allows for practical intubation training
- ❖ Representation of nasal passage to allow for nasogastric intubation training
- ❖ Representation of cephalic vein to practice venipuncture and catheterization in both front limbs
- ❖ Chest compression function with feedback monitor which provides feedback on speed and depth of compressions
- ❖ Representation of ear and simulated debris to practice ear cleaning techniques
- ❖ Ideal for practicing restraint and bandaging techniques

## Replaceable parts

Tongue • Venipuncture Tubing • Laryngopharynx Component • Ear Capsule • Compression Monitor • Belly Capsule • Leg Covering • Venipuncture Fluid Bag



# CANINE DENTAL SURGICAL MODEL

- ❖ Simulated teeth and bone are surrounded with soft rubber gums, complete with periosteum and periodontal ligament
- ❖ Allows for practical simulation including nerve blocks, luxation, elevation and extraction of any tooth, as well as tongue, epiglottis, esophagus and trachea to allow for intubation training
- ❖ Maxilla and mandible are easily replaced
- ❖ Clamp and arm for securing model to table is included

## Package

Canine dental model in either brown or black  
Three replaceable extraction jaw sets  
Carrying case with custom foam inserts  
Clamp and arm for securing to table  
BONUS clear jaw set

*Jaw set consists of one mandible and one maxilla. Canine skulls are sold separately*



# CANINE DENTAL TECHNICIAN MODEL

- ❖ Simulated teeth and bone are surrounded with soft rubber gums
- ❖ Allows for practical simulation including manual and ultrasonic scaling, probing, nerve blocks, as well as tongue, epiglottis, esophagus, and trachea to allow for intubation training
- ❖ Maxilla and mandible are easily replaced
- ❖ Model comes with clamp and arm, and two jaw sets:
  - One set with calculus accumulation for scaling
  - One radiodense jaw set to practice positioning techniques for radiographs\*

\*X-ray set has gums with periodontal ligament

## Package:

Canine dental model in either brown or black  
Two replaceable scaling sets  
One replaceable x-ray set  
Carrying case with custom foam inserts  
Clamp and arm for securing to table  
BONUS clear jaw set  
30 ml jar of artificial calculus

*Jaw set consists of one mandible and one maxilla*

*Canine skulls also sold separately*





# CANINE BANDAGING LIMBS



- ❖ Represents a medium sized dog
- ❖ Features separated toes
- ❖ Durable silicone with articulated skeleton
- ❖ Solid mounting points
- ❖ Each paw has a rubber sleeve to allow for taping

# CANINE SPAY SIMULATOR



*Each Canine Spay Unit includes  
3 canine multi layer suture pads and 3 uteri*

## Components

- ❖ Replaceable uterus with ovaries, broad ligament, round ligament and suspensory ligaments
- ❖ Large and small intestine with mesentery and cecum
- ❖ Spleen, kidneys and bladder
- ❖ Upper and lower thermoformed ABS plastic shell with suction cups
- ❖ Canine multi layer suture pad that features nipples and umbilicus
- ❖ Attachment pins for suture pad

## Consumable Parts

- ❖ Canine Uterus *with broad & suspensory ligaments*
- ❖ Canine Suture Pad *with nipples and umbilicus*

# CAPTIVE BOLT GUN TRAINING MODELS

*PENETRATING*



**LONG FACED  
BOVINE**



**MARKET  
STEER**



**MARKET  
LAMB**



**SHORT FACED  
BOVINE**



**SOW**



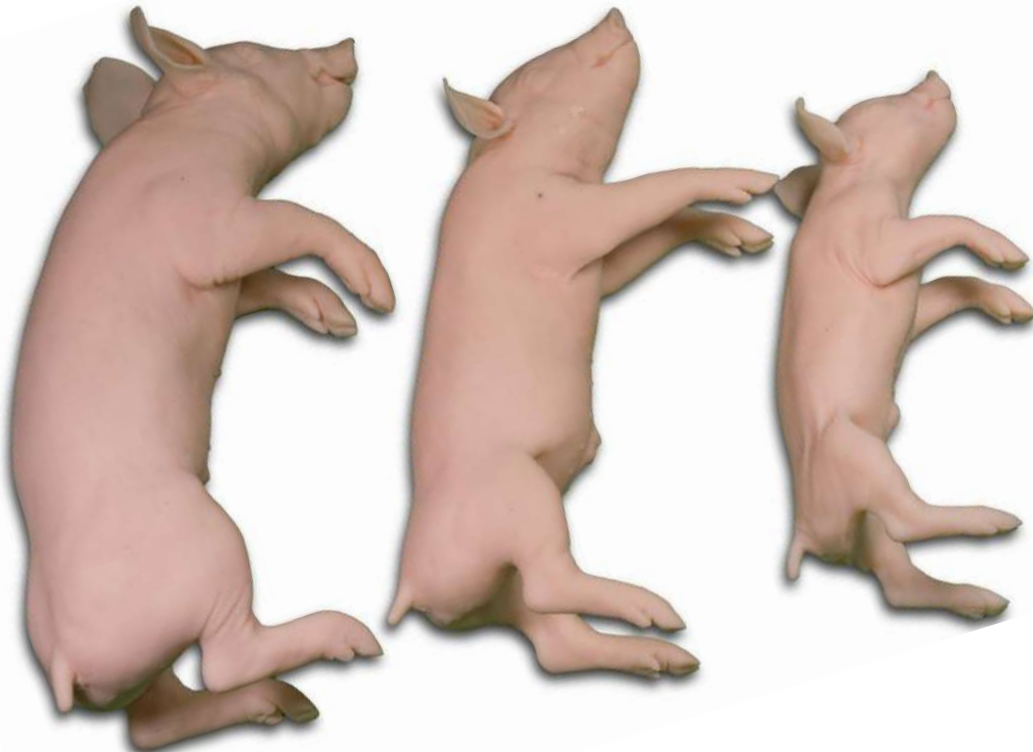
**MARKET  
HOG**

All head models are equipped with a reusable brain canister with skull plate and hair covering. The brain is a dimensionally accurate biological representation.

The targeting brain canisters can be removed and opened to show the shot accuracy, bolt track, depth of penetration.



# CAPTIVE BOLT GUN TRAINING MODELS *NON PENETRATING*



**9KG**

**6KG  
PIGLETS**

**3KG**



**4KG LAMB**

Full body models have feel and weight of live animals and have replaceable heads for use with non penetrating captive bolts. Used for training animal positioning and bolt placement. Each head can endure multiple shots. Each body includes 3 replaceable heads.

# CAPTIVE BOLT GUN TRAINING MODELS

## Penetrating Models

*Each head includes 2 reusable silicone canisters with 4 skull / hair plates*

- ❖ Long Face Bovine (*Holstein*)
- ❖ Short Face Bovine (*Hereford*)
- ❖ Market Steer (*approx yearling 1000lbs*)
- ❖ Sow
- ❖ Market Hog
- ❖ Market Lamb

## Reusable Brain Canisters

- ❖ Large Canister - *Bovine & Steer*
- ❖ Large Skull / Hair Plate
- ❖ Medium Canister - *Sow & Market Hog*
- ❖ Medium Skull / Hair Plate
- ❖ Small Canister - *Market Lamb*
- ❖ Small Skull / Hair Plate

## Non Penetrating Models

*3 heads are included with each non penetrating bolt model*

- ❖ Small 3kg Piglet (*neonate*)
- ❖ Medium 6kg Piglet
- ❖ Large 9kg Piglet
- ❖ Set of all 3 piglets
- ❖ 4kg Lamb

## Replaceable Heads

- ❖ Small 3kg Piglet
- ❖ Medium 6 kg Piglet
- ❖ Large 9kg Piglet
- ❖ 4kg Lamb
- ❖ Rolling Stand  
Adjustable for height, rostral tilt, and 90 degree rotation

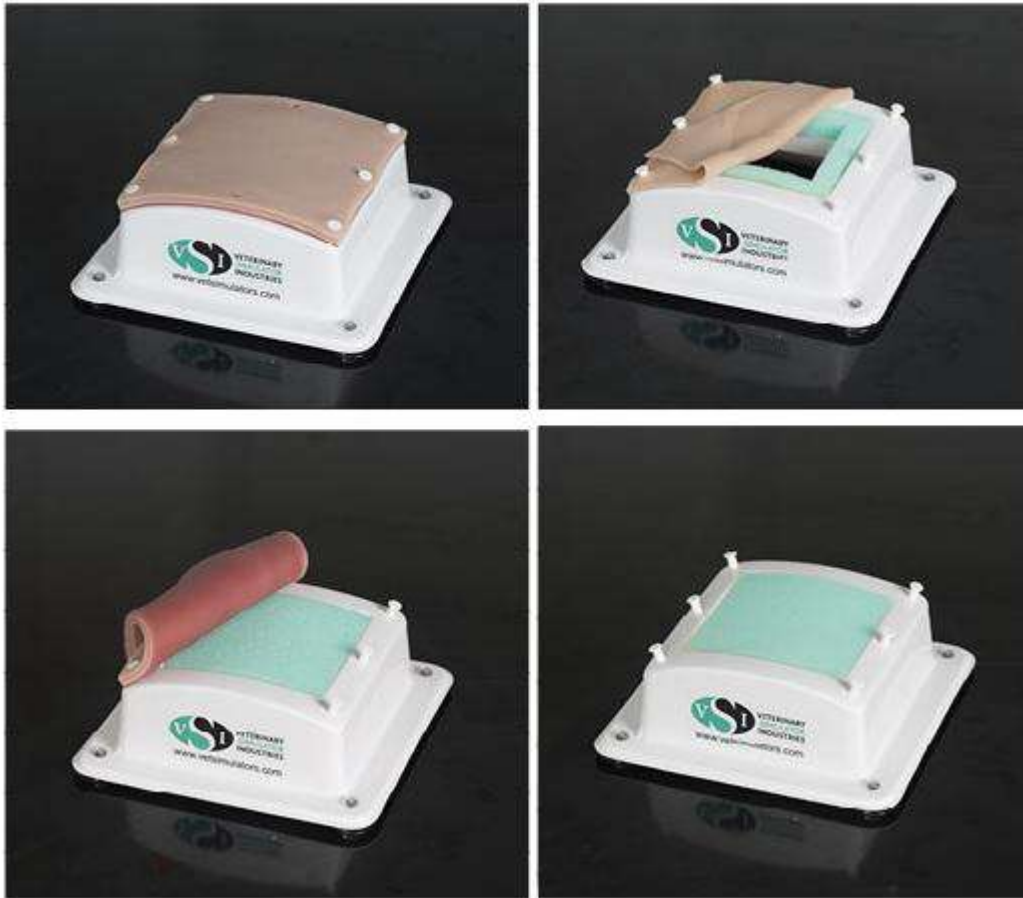
## Replaceable Ears\*

*\*Available only on the Short Face and Long Face Bovine models.*



**REUSABLE  
BRAIN  
CANISTER**

# SUTURE TRAINING PADS



## ❖ **Multi Layer Suture Pad**

- Consist of four (4) layers intended to represent the dermis, subcutaneous, linea and transverse fascia

## ❖ **Canine Multi Layer Suture Pad**

- Feature nipples and umbilicus
- Consist of four (4) layers intended to represent the dermis, subcutaneous, linea and transverse fascia

## ❖ **Hollow Organ Suture Pad**

- Consists of one (1) layer, intended to represent a hollow organ

## ❖ **Suture Pad Base Unit**

- Thermoformed ABS plastic shell with suture pad attachment pins
- Supplied with two foam inserts. Solid foam insert is for use with the multi layer suture pad. Perimeter foam insert is for use with the hollow organ suture pad. Can be stored on the inside of the base when not in use.
- Has suction cups that will adhere to smooth surfaces.



# ADDITIONAL AND REPLACEMENT PARTS

## *EQUINE*

- ❖ GI Tract with Small Intestine
  - ❖ Small Intestine
  - ❖ Inflatable Rectum
  
  - ❖ Reproductive Tract Assembly
    - Includes Perineum Panel, Uterus, Rectum, Ring
  
  - ❖ Equine Ovaries Set (6) with case
  - ❖ Large Ovaries with Follicles (2)
  - ❖ Large Ovaries without Follicles (2)
  - ❖ Small Anestrus Ovaries (2)
  - ❖ Spleen
  - ❖ Kidney
  - ❖ Aorta
  - ❖ Abdominocentesis / Belly Tap Plug
- ❖ Intramuscular Pads (2)
  - ❖ Equine Jugular Veins (10)
  - ❖ Neck Venipuncture Skin Covering
  - ❖ Neck Venipuncture Skin Covering with Mane
  - ❖ Neck Venipuncture Mane
  - ❖ Equine Neck Venipuncture Fluid 0.5L
  
  - ❖ Equine Palpation Radiology Limb with Stand
  - ❖ Equine Palpation Radiology Limb without Stand
  - ❖ Equine Limb Stand



**ABDOMINOCENTESIS  
BELLY PLUG**



**EQUINE OVARY**



**SPLEEN  
AND KIDNEY**



**EQUINE UTERUS**

# ADDITIONAL AND REPLACEMENT PARTS

## BOVINE

- ❖ Hereford/Holstein Birthing Panel Assembly
    - Pre assembled panel, uterine bag, ring
  - ❖ Hereford/Holstein Birthing Perineum Panel
  - ❖ Hereford/Holstein Uterine Bag
  
  - ❖ Hereford/Holstein Palpation Panel Assembly
    - Pre assembled panel, inflatable rectum, ring
  - ❖ Hereford/Holstein Palpation Perineum Panel
  - ❖ Inflatable Rectum
  
  - ❖ Hereford/Holstein Tail
  - ❖ Hereford/Holstein Epidural/Venipuncture Tail
  - ❖ Hereford/Holstein Calf Air Bed Support
  - ❖ Compact Calf Air Bed Support
  
  - ❖ Hereford Teats
  - ❖ Holstein Teats
  - ❖ Pelvic Air Bladder
  - ❖ Bovine Pelvis
- ❖ Single Color Calf *Red & Black Angus*
  - ❖ Two Color Calf *Hereford & Holstein*
  
  - ❖ Bovine Theriogenology Uterus Set (5)
    - **Does not include** Palpation Panel Assembly
  - ❖ Bovine Theriogenology Uterus Set (5)
    - Including Palpation Panel Assembly
  
  - ❖ Open Cow Uterus
  - ❖ Heifer Uterus
  - ❖ 45 Days of Pregnancy Uterus
  - ❖ 60 Days of Pregnancy Uterus
  - ❖ 90 Days of Pregnancy Uterus
  - ❖ Bovine Ovaries Set (8)

**BOVINE  
TAIL**



**CALF AIR BED  
SUPPORT**



**PADDED FETAL  
EXTRACTOR**



**UTERINE  
BAG**



# ADDITIONAL AND REPLACEMENT PARTS *CANINE DENTAL MODEL*

- ❖ Canine Skull model with arm/clamp
- ❖ Extraction - Mandible
- ❖ Extraction - Maxilla
- \*Extraction jaw sets not suitable for x-ray**
  
- ❖ Scaling/Polishing - Mandible
- ❖ Scaling/Polishing - Maxilla
- ❖ X-ray ONLY jaw set (maxilla, mandible)
- ❖ Clear jaw set (maxilla, mandible)
- ❖ 30 ml artificial calculus
  
- ❖ Laryngopharynx Component
- ❖ Replaceable Tongue
- ❖ Clamp/arm
- ❖ Canine Head in black or brown

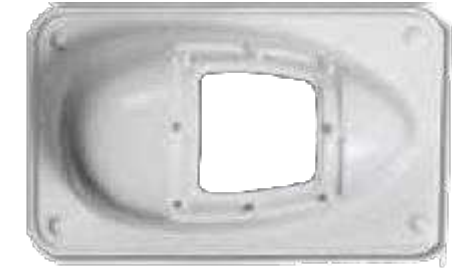




# ADDITIONAL AND REPLACEMENT PARTS

## *CANINE SPAY MODEL*

**BASE PLASTIC  
SHELL**



- ❖ Canine Uterus
- ❖ Canine Multi Layer Suture Pad

- ❖ Base Plastic Shell

- ❖ Spleen Replacement
- ❖ Kidney Replacements (2)
- ❖ Bladder Replacement
- ❖ Canine GI Tract Replacement
  - Mesentary, cecum, small & large intestine

**CANINE  
UTERUS**



**CANINE  
SPLEEN**



## Advanced Veterinary Training



### Canine Ovariohysterectomy (Spay) Model Item #255

Rescue Critters' canine ovariohysterectomy (spay) model features a very realistic female reproductive organ, including the region of cervix, uterine body, uterine horns, ovaries, ovarian arteries and veins, suspensory ligaments and membrane for realism. Also embedded in the model are the bladder and ureters and colon.

The model also helps trainees practice their suturing skills on the abdominal wall musculature and skin layer upon completion of the ovariohysterectomy procedure. Included in this set are one canine ovariohysterectomy model and acrylic holder. K9 Ovariohysterectomy (Spay) Replacement Unit (Item #258) / 5 Replacement Units (Item #259) / 10 Replacement Units (Item #260). Replacement units do not include acrylic holders.

### Canine Orchiectomy (Neuter) Model Item #256

Rescue Critters' canine orchiectomy (neuter) model features realistic testes and testicular epididymus along with the testicular blood vessels and spermatic ducts that need to be removed during the procedure.

This set comes with one orchiectomy model and acrylic holder. 1 Replacement Unit (Item #261) / 5 Replacement Units (Item #262) / 10 Replacement Units (Item #263). Replacement units do not include acrylic holders.



### K9 Ovariohysterectomy Instructional Tool Item #270

This instructional tool allows trainers to visually explain the various parts of the female canine reproductive organ prior to trainees working on the ovariohysterectomy model.

A perfect accompaniment to Rescue Critters' Canine Ovariohysterectomy model.

## Advanced Veterinary Training



### K9 Orchietomy Instructional Tool Item #271

This instructional tool allows trainers to visually explain the various parts of the male canine reproductive organ prior to trainees working on the orchietomy (neuter) model. A perfect accompaniment to Rescue Critters' Canine Orchietomy model.

### Critical Care Jerry Item #110



CCJ is engineered as a complete emergency room veterinary training mannikin. It has the ability to simulate trauma and features jugular and vascular access. Realistic representations of the trachea, esophagus, and epiglottis are built into the airway. These provide for the training of

- airway management
- ventilation
- endotracheal intubation
- mouth-to-snout resuscitation
- circulation with external chest compressions

Mannikin comes with working lungs and artificial pulse and features for splinting and bandaging. Included in the carrying case are a kneeling pad, endotracheal tube, syringe, brush, and 5 disposable lungs. CCJ also comes with a bonus item – a full K-9 IV trainer in its own carrying case.



### Critical Care Fluffy Item #210

Like its canine counterpart CCJ, Critical Care Fluffy is a full-sized, realistic feline mannikin.

It has all the features present in CCJ – trachea, esophagus, epiglottis, tongue, articulated jaw and working lungs. Designed for CPR, veterinarians can perform different techniques in resuscitation on the cat. Moreover, one can also practice cat

restraint, bandaging, and venipuncture (there are several vein practice sites.)

CCF accessories include a carrying case, artificial training blood, IV reservoir, IV holder, 5 disposable lungs, endotracheal tube and syringe.



## Advanced Veterinary Training



### Emily K9 Positioning Mannikin Item #300

Properly positioning an animal is a skill that makes a better-rounded veterinarian. Emily is built exactly for this purpose. Students learn how to position dogs for abdominal surgery, x-ray, spay and neuter, advanced spinal stabilization, spinal recumbency and more. It has natural movements and offers resistance; allowing you to safely practice techniques before working on live animals. Fully articulated, Emily has shoulders and hip joints that rotate realistically, with 90° flexibility. Also with 90° range of motion are the knees, elbows, and carpal and hock joints. Emily comes complete with carrying case, kneeling pad and brush.

### Goldie - K9 Breath/Heart Sound Simulator Item #350

The highlight of this breath/heart sound (BHS) simulator is to allow students to perform auscultation, offering them opportunities to hear the different sounds with a stethoscope.

Instructors can choose various sound scenarios for the classroom. This product uses plug-in modules, with data collated from actual patients. Five speakers are installed directly in our Goldie canine BHS mannikin. The BHS unit also has two lights

that illuminate during expiration. It is powered by a 9V battery and comes with a limited warranty. Each Goldie comes with a tutor MS, one Breath Sound module, one Heart Sound module, five installed custom speakers and a 9V battery.

#### Breath Sound module includes:

Tracheal, Vesicular, Bronchial-Vesicular, Wheezes, Monophonic Wheeze, Pleural Friction Rub, Stridor, Cavernous, Crackles, Pulmonary Edema and Puppy.

#### Heart Sound module includes:

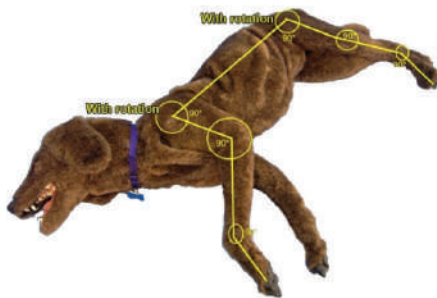
Atrial Fib, Mitral Regurgitation, Mitral Valve Click, Normal Heartbeat, PDA, Pulmonic Stenosis, Respiratory Crackles and MR Murmurs, SAS, Mitral Regurgitation, VPC and VSD.



### K-9 Breath Sound and Heart Sound Simulator Item #800

Rescue Critters and Pinnacle Technologies Group have worked together to make available this breath and heart sound simulator for our Jerry line of mannikins. Utilizing plug-in modules, instructors can select the appropriate scenario for the classroom situation. The unit includes four speakers directly installed into any of our Jerry line of mannikins. Each BHS Simulator comes with one module. Please specify Breath Sound or Heart Sound module when ordering. Breath Sound and Heart Sound

## Advanced Veterinary Training



### NEW & IMPROVED!!! Rufus Bandaging Mannikin Item #525

This full-sized model is ideal for practical lab skills and practicing advanced bandaging techniques. Apart from administering first aid, the mannikin can be used to practice mouth-to-snout resuscitation. The left knee, elbow, carpal and hock joints are capable of 90° movements. Shoulder and hip joints also have the flexibility of 90° rotation.

With the new features, users can now also practice the Velpeau Sling on the right forelimb and the Ehmer Sling on the right hind leg.

In short, these are just some of the bandaging techniques users can practice on Rufus: 90-90-flexion sling, Carpal sling, Robert Jones bandage, Velpeau sling, Ehmer sling, Limb bandage using stirrups, Trunk bandage, Tail bandage, Padded hip bandage, Head and Ear bandage, Casts.

Rufus comes with five disposable lungs, a brush, and carrying case with kneeling pad.

### K-9 Thoracentesis Item #925

Our carefully crafted canine Thoracentesis mannikin will help practitioners in performing chest tube placements, and simulating emergency trauma by aspirating air and fluid from the thoracic cavity. Convenient anatomical landmarks are placed at key points for ease of use and quick learning.



### Advanced Airway Jerry (AA) Item #505



Advanced Airway Jerry is a full-sized mannikin built with a lifelike airway. Clearly presented are the trachea, esophagus and epiglottis.

These carefully built organs, coupled with working lungs and an artificial pulse will assist students in endotracheal placement, compressions, and mouth-to-snout resuscitation. AA is also designed to splint and bandage. Parts can be cleaned and replaced.

## Advanced Veterinary Training



### K-9 Intubation Trainer Item #606

This K9 model is built for practicing endotracheal placement and comes with a pass/fail feature.

Representations of the trachea, esophagus and epiglottis are all realistically crafted into this dog bust. It also features an airway with working lungs. Because the head is attached to a table clamp with a pivot base, it can be easily manipulated.

### K-9 IV Trainer Item #404

Specifically built to teach venipuncture, the drawing of blood and performing of IV injections, our K9 IV Trainer is the perfect pedagogical tool for this purpose.

It is realistically sculpted as the hind limb of a dog. This simple product will help students become accustomed to these tactile procedures.



### Mimolette (mee-moh-let) Lab Rat\* Item #325

**Endotracheal intubation;  
Cardiac puncture;  
Blood collection from the saphenous vein**

Mimolette Lab Rat mannikin was created with these key features to end hopefully the practice of using live rats for training.

The laboratory rat has been used very widely in experiments. Following our ethos regarding humane science, Mimolette is Rescue

Critters® proudest creation to date.

Mimolette comes complete with her own carrying case, lungs, heart, veins, artificial blood and IV accessories.

\* Patent Pending

An option for a detachable and disposable tail for the capability of IV access at the caudal vein site is available for Mimolette.



## Advanced Veterinary Training



### Squeekums Item #320

Rescue Critters' Squeekums Rat mannikin allows students, lab technicians, and handlers to learn how to confidently handle and safely manage lab rodents. The tail of this amazing rodent model can be conveniently detached and disposed of, while also having the capability of IV access at the caudal vein site. Tiny replaceable ears help students learn ear tagging procedures. The model is fully articulated and extremely realistic. Head, feet, and limbs move in a natural manner. Squeekums comes with its own protective case, IV accessories, artificial blood, and instructions. Replacement Tail (Item# 321) / Replacement Ears (Item#322).

### Haemostasis Pad Item #910

Rescue Critters'® Haemostasis Pad is an advanced surgical training product. The haemostasis pad has an immensely lifelike feel to it and features the epidermis, dermis, subcutis layers and blood vessels.

Trainees can make incisions on the blood vessels and perform haemostasis, longitudinal arteriotomy, end-to-end anastomosis and ligation.



Another secondary function of the Haemostasis Pad enables trainees to also practise their suturing skills on a realistic surface.

This pad is approximately 12X12X0.5". It has a surface area about 15 times larger than our Suture Patch. Trainees should be able to perform about 50 incisions over the entire surface of the pad, depending on the size of the incisions.

The Haemostasis Pad comes in its own specially designed box and a pack of artificial blood. The IV drip bag and stand may be purchased separately. Available in mini size (Item #912).



### IM & SubQ Injection Pad Item #908

Even animals have nerve cells to indicate pain or discomfort and having an injection administered by a skilled medical person makes a world of difference to a pet.

Now you can practice and become more apt at injections with the Rescue Critters'® improved SQ/IM Injection Pad. Practical experience may help burnish the clinical motor skills, but alas, it is providing better critical care to the injured animal that is, perhaps the ideal. This trainer

features an even more realistic pad simulating canine skin and muscle tissue and comes in its own ABS case. Dimensions of the SQ/IM injection pad are approximately 3"x5"x1.25".

## Advanced Veterinary Training

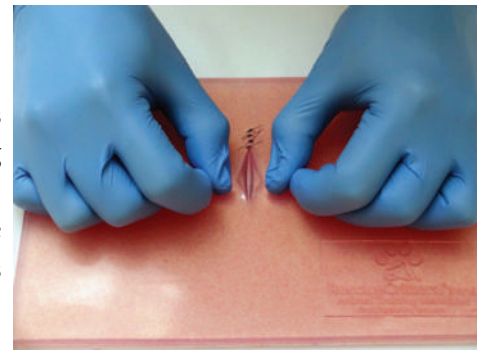


### Suture Patch Item #906

Extremely realistic in feel, Rescue Critters® created the Suture Patch for vet techs and med students to practice their suturing skills. Incisions can be made over the entire surface of the patch. Dimensions of the patch are approximately 3"x5"x0.5". Highly recommended for each individual student to take home for practical training.

### Suture Patch II (Transparent) Item #907

Rescue Critters'® Suture Patch II is made transparent to allow vet techs and med students to study and analyze their handiwork while allowing them to practice their suturing on a larger surface area. Since introducing the product in 2012, we have improved the texture to reflect greater realism. This patch can be used repeatedly. Incisions can be made over the entire surface of the patch. Dimensions of the pad are approximately 9.5" X 6.5" X 0.5".



### Suture Leg Trainer Item #909

Made from a variety of artificial materials, the Suture Leg Trainer can be used for countless suture exercises. Muscle striations, outer dermis, adipose tissue are faithfully recreated, so that internal and external sutures can be practiced.

### Femoral Leg Bone Fracture Item #111

An added feature to the CCJ mannikin can now be included – a long oblique fracture of the right femoral leg bone. This custom CCJ will allow students to learn how to set and repair common K-9 fractures. The non-removable fracture can also be added to our "Advanced Airway Jerry (AA)", "Jerry", and Pulse Trainer mannikins.



## Pet First Aid



### **Jerry K-9 CPR Mannikin Item #101**

A simplified version of Critical Care Jerry (CCJ), the Jerry mannikin has working lungs and an artificial pulse built to teach mouth-to-snout resuscitation. It can splint, thus allowing students to learn bandaging. Parts can be cleaned and are disposable. Accessories include a carrying case with kneeling pad, brush and 5 disposable lungs. Face shields are highly recommended and sold separately.

### **Fluffy Feline CPR Mannikin Item #202**

The feline counterpart of Jerry, Fluffy has realistic working lungs and an artificial pulse.

Students learn to perform feline compressions and mouth-to-snout resuscitation. It is also designed to splint and allow bandaging. Parts can be cleaned and are disposable. Accessories include a carrying case and 5 disposable lungs. Face shields are highly recommended and sold separately.



### **CeePeR K-9 MANNIKIN Item #707**

CeePeR is Rescue Critters' introductory mannikin in our range of products, developed especially for introducing basic CPR skills to young pet owners – It has working lungs with CPR capabilities. Compressions, splinting, and bandaging are the other features that can be performed on the CeePeR. The parts are disposable, while the fur can be completely removed for cleaning. The product comes with a carrying case with kneeling pad and five disposable lungs.

An added femoral pulse feature (Item# 708) can be included.

### **K-9 Pulse Trainer Item #710**

Our K9 Pulse Trainer is affordable yet practical in the simplest laboratory setting. This leg has a working artificial pulse and built to splint so that bandaging can be performed. The product comes in a carrying case.





## Pet First Aid

### Rescue Critters® Pet First Aid for Kids Book Item #2000



In unexpected emergency situations, it is useful to know how to give basic CPR, even to our pet dogs and cats.

Written in simple language, our ALL-NEW second edition Rescue Critters® Pet First Aid for Kids book serves as a quick reference for youth ages 8 and older. The book outlines basic steps, along with detailed photographs, and materials needed BEFORE you get your pet to the Veterinarian -- how to handle choking and allergic reactions, what to do for a bee sting, how to administer rescue breathing and CPR. The book also prepares the reader on what to do in situations such as bleeding, fractures, heatstroke, frostbites, poisoning, seizures, shock and upset tummy.

This 36-page book is perfect-bound in laminated soft cover and contains pages at the end for the reader to write their own notes. A must-have for every home with pets!

## Search & Rescue



### Lucky Horse Mannikin Item #750

Singular events can happen and catch you unprepared. Without endangering a live horse, trainers can hone their skills, while trainees can safely learn search and rescue techniques with Lucky the horse mannikin. In terms of size, Lucky is an exact replica of a horse. It weighs 800 pounds and articulates. It has a tail feature that acts as an attachment point, with a height of 15 hands. Ruggedly built, Lucky accepts standard horse harnesses, glides and gears, and it can be used in all weathers and ground conditions.

Lucky is built for organizations such as fire and police departments, SAR groups, military, government agencies, animal control, humane organizations, and vet and equine groups.

Accessories include tools for assembly, carrying bag for all rods, knobs, and washers.

### Lucky Stand Item #760

This custom made horse mannikin stand allows for the simulated standing position of Lucky making instruction and the application of harnesses and slings manageable. The stand easily disassembles.



### Lucky Mannikin Keys

Two knob keys which make the assembly of Lucky the Horse convenient. Keys are sold in pairs.

## Search & Rescue



### **Fetch Item #920**

Unlike our other veterinary mannikins, Fetch is a truly unique dog made to reflect the real weight of a full-sized German Shepherd. This sturdy dog is a perfect training partner for search and rescue organizations, animal regulations controls and police K-9 units. The utility of Fetch is endless. Because it is a heavy life-sized dog, it creates realism during training sessions. For instance, the practice of extricating trapped dogs, fast water and ice-hole retrieval.

Especially pertinent, police and military K-9 units can practice rappelling, negotiate complex geography and critical areas. A harness, fashioned just for Fetch, allows him to be lowered, rappelled, cast, and retrieved in training. Fetch is designed to float, and its tough exterior can handle the harshest terrain.

Representations of bullet entrance, exit wounds, and lacerations now come in all Fetches.

An impaled knife wound with removable knife (Item# 920D) can be included at an additional cost.

### **Marco (45 lb.) Item #927 and Marco (60 lb.) Item #926**



In loving memory of the loyal military canine who bravely died in service, Marco was made specifically for and by the request of the military for parachute training.

This mannikin comes without a cordura cover.

A separate cordura cover is sold separately.



## Accessories



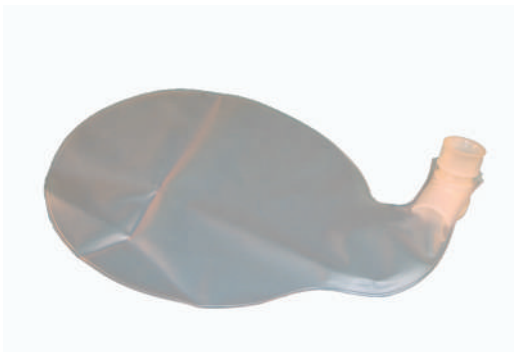
### Disposable Mannikin Face Shields Item 205

Individual shields for each student.  
Comes in a roll of 36.



### Artificial blood Item #830

Artificial blood powder simply needs to be mixed with water. One packet makes one gallon.



### Additional Disposable Lungs - Jerry

Sold in packs of 24 or 72 disposable lungs.  
(CeePeR™ Dog uses the same lungs as our “Jerry” mannikins)



### Additional Disposable Lungs - Fluffy

Sold in packs of 24 or 72 disposable lungs.



### Additional Disposable Veins - K-9 IV Trainer Item #406

K-9 IV Trainer cephalic vein.  
Beginner training vein. Good for 75-100 sticks.



### Additional Disposable Veins - K-9 IV Trainer Item #407

K-9 IV Trainer cephalic vein.  
Intermediate training vein. Good for 1-3 sticks or 1 catheter placement.

## Accessories



**Additional Disposable Veins - CCJ  
Item #408**

“Critical Care Jerry” Jugular & cephalic veins. Beginner training veins only. Good for 75-100 sticks.



**Additional Disposable Veins - CCF  
Item #409**

“Critical Care Fluffy” Jugular & cephalic veins. Intermediate training vein only. Good for 1-3 sticks or 1 catheter placement.



**Mannikin Stand  
Item #151**

An easy way to display, store and present your Rescue Critters! Brand Mannikin.

The mannikin stand comes in two sections. Welded steel construction provides a sturdy platform to use as a lecture and demonstration tool.

The stand is powder coated for durability and long life. The mannikin holder easily rotates 360° for a wide range of positioning and is removable for convenient transport.

Approximately 44” high and 24” wide.

Available in red, blue, black, yellow, white and green.



**K-9 Mannikin Demonstration Cart  
and Platform  
Item #150**

This heavy duty cart is designed to allow instructors and students to easily manage and demonstrate K-9 veterinary instruction using Rescue Critters! line of K-9 mannikins. Welded steel construction provides a sturdy platform to use as a lecture and demonstration tool. The mannikin holder easily rotates 360° for a wide range of positioning and is removable for convenient transport while the lower deck can be used as additional storage space. The cart is powder coated for durability and long life. Available in red, blue, black, yellow, white and green.

# VETERINARY



**Medical Simulator**  
INNOVACIÓN EN EDUCACIÓN

---

#### Medical Simulator Spain

Ctra. de Pozuelo a Majadahonda Km. 1800 28223  
Pozuelo de Alarcón | Madrid | Spain T (+34) 91 382 08  
88 | F (+34) 91 381 98 80

---

[www.medical-simulator.com](http://www.medical-simulator.com)  
[info@medical-simulator.com](mailto:info@medical-simulator.com)

