

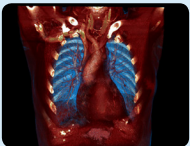


Education Portal

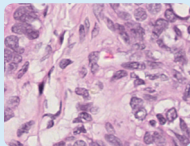
A cloud-based library of cases for teaching

Education Portal runs on a state of the art cloud-based software that allows you to interact with 3D models and 2D stacks, from real humans and real anatomical variations. At the same time you can have access through different devices and interact with the library in different ways, in different devices

Our libraries



Clinical Anatomy



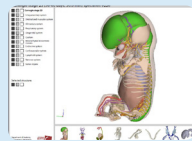
Histology



Prosected Anatomy



Veterinary



Embryology

Applications



Anatomy Education



Clinical PBL



Simulated Lab Scenarios



Embryology

- » Radiology
- » Pathology
- » Surgery
- » Orthopaedics
- » Emergency Medicine

Sectra Education Portal

Study from any device



- » Access cases, quizzes, etc from any laptop, tablet or smart phone.

Prepare from any location



- » Prepare your cases from any connected computer.

PRIVATE SPACE
PUBLIC SPACE

Reference Cases



- » Access a library of quality assured Sectra reference cases.

International Collaboration



- » Share your selected cases with other Sectra users around the world.
- » Access new cases shared by other parties in the network.



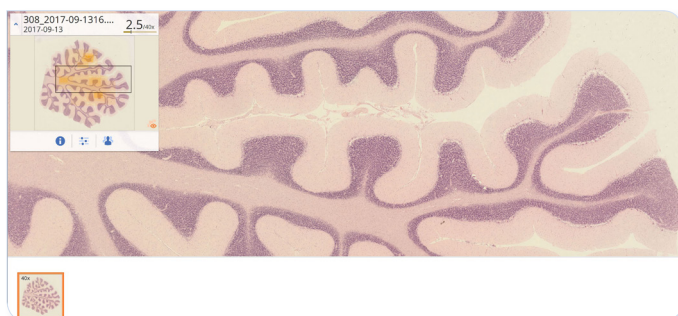
- » Access as a teacher in one of the Sectra Terminals or as a student in personal devices or computers.



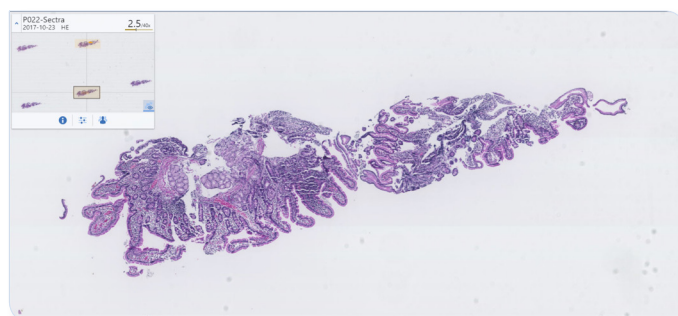
In collaboration with worldwide recognized institutions:



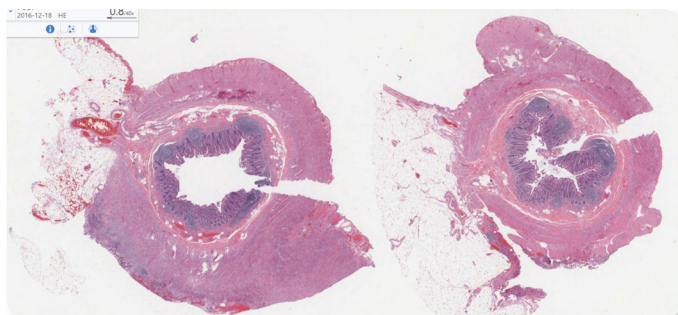
Histology library



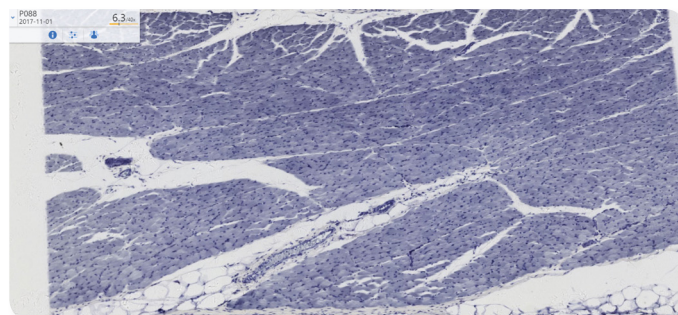
P021. Cerebellum
Published by Karolinska Institute (Sweden)



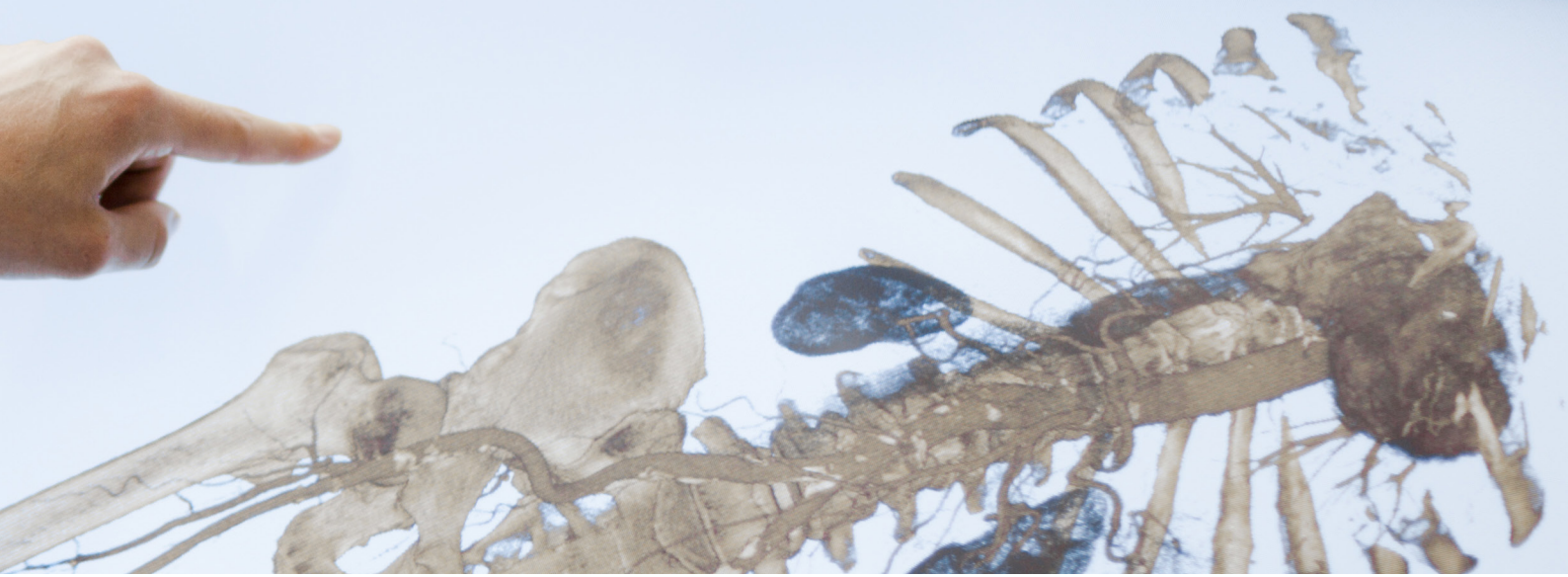
P022. Duodenum
Published by Fundación Universitaria para Ciencias de la Salud (Colombia)



P007. Appendix
Published by University of Colorado (USA)



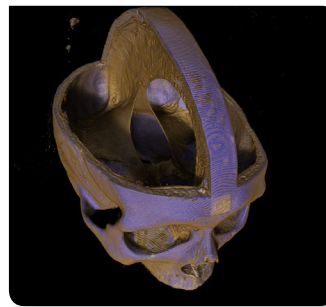
P088. Skeletal Muscle (horizontal)
Published by Universidade Federal da Grande Dourados (Brazil)



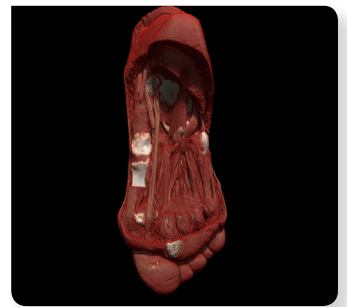
Prosected anatomy library by Monash University



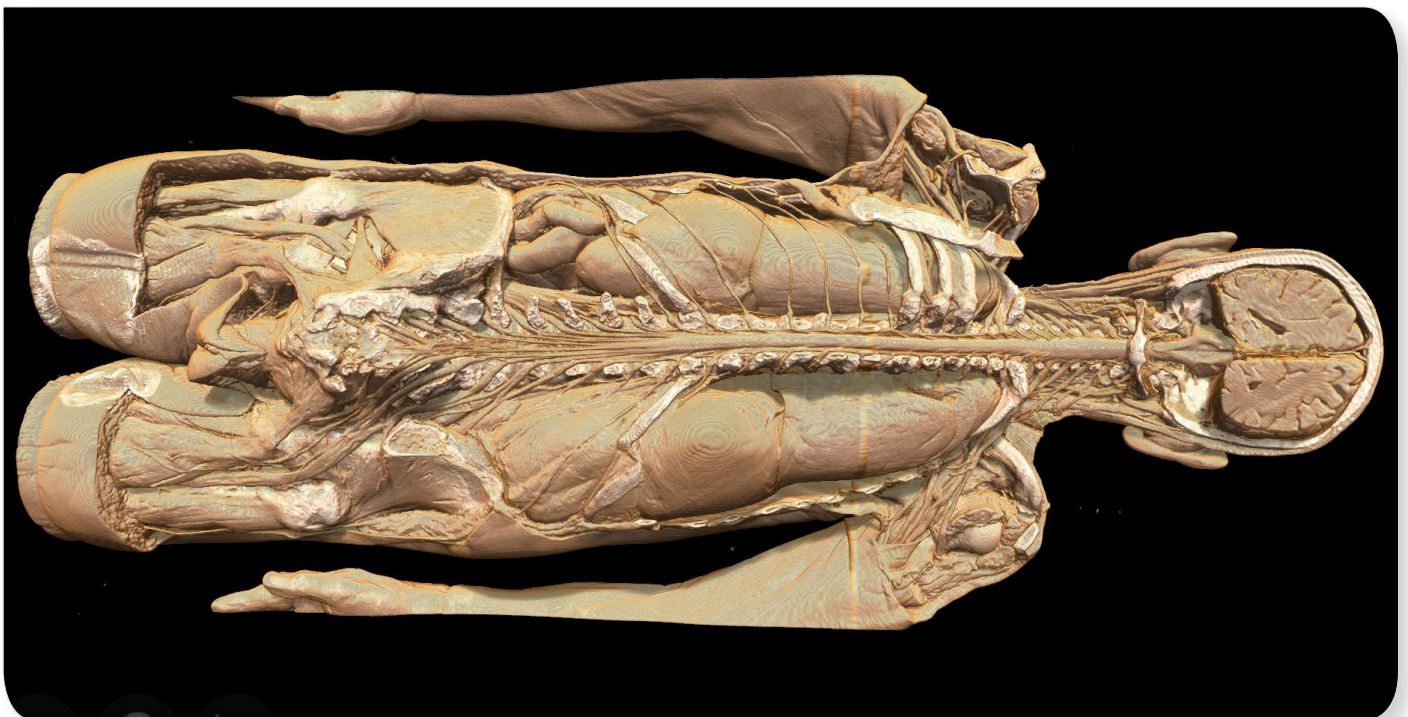
MO19. Axilla and Thorax
Comparison between 3D printed model and 3D render with realistic image.



MO05. Dural skull
Dissected and opened cranial cavity displays the dural folds and dural venous sinuses, including the falx cerebri.

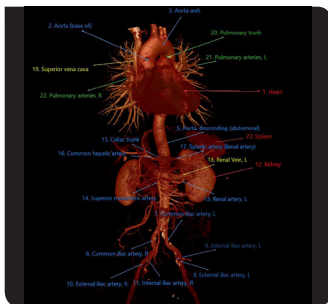


MO25. Foot Plantar Dissection A
Because the models are scanned from real prosected cadavers, the details provide information on nervous, muscular and vascular system as close as possible to the real cadaver.



MO50. Dorsal Axial Body and Nerve
This specimen shows all the nervous plexus at the same time and their interactions with peripheral organs. A unique view of the human body.

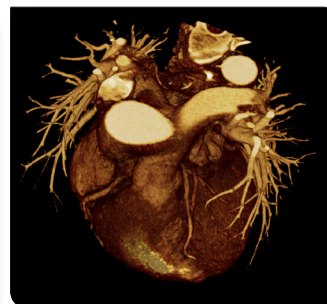
Clinical anatomy library



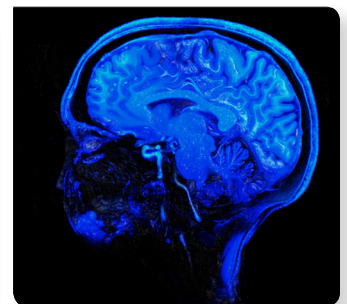
SO57. Thorax Tumor
"References in thorax".



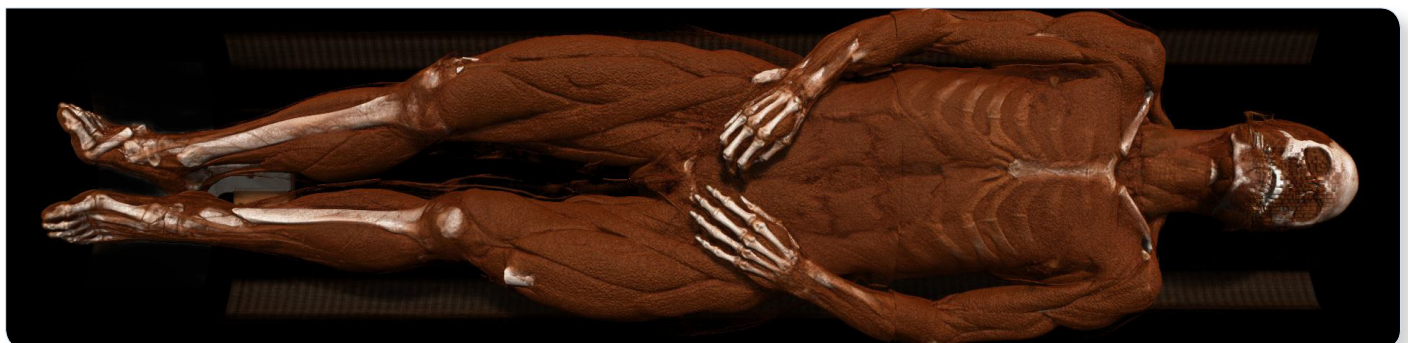
SO11. Thorax and Abdomen B
"Labeled abdominal aorta".



SO80. Heart G
"Segmented heart".

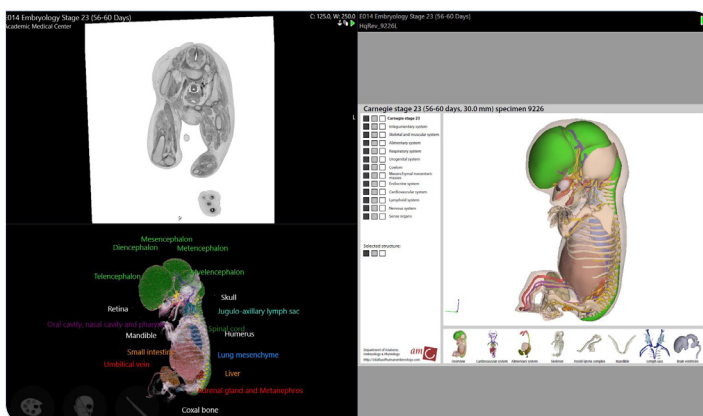


U028. Visible 7T brain
"Sagital cut of brain scanned with a 7T MRI".

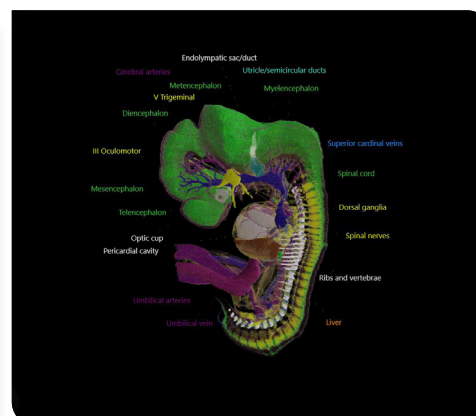


Multiple trauma female
Full female body scan.

Embryology library, Carnegie stages by Academic Medical Center, Netherlands



E014. Embryology Stage 23 (56-60 days)
Standard presentation includes an interactive 3D pdf for labeled and colored anatomy, a sample of histological images and a 3D scan and reconstruction.



E012. Embryology Stage 20 (51-53 days)
3D reconstruction and labeled anatomy with full access to set of measurement, cut and rotation tools.



Medical Simulator
INNOVACIÓN EN EDUCACIÓN

Medical Simulator Spain
Ctra. de Pozuelo a Majadahonda Km. 1.800
28223 Pozuelo de Alarcón | Madrid | Spain
T (+34) 91 382 08 88 | F (+34) 91 381 98 80

www.medical-simulator.com
info@medical-simulator.com

