



SOMSO  
MODELLE  
SINCE 1876

# *Nature is our Model*

GENITAL ORGANS  
EMBRYONIC DEVELOPMENT  
ZIEGLER SERIES  
BIRTH  
BABY CARE



Medical Simulator  
INNOVACIÓN EN EDUCACIÓN

# ANATOMY 13 - GENITAL ORGANS



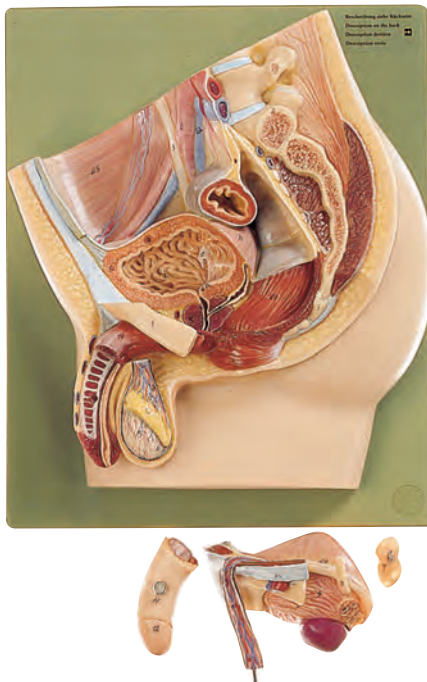
**MS 1 ·  
MEDIAN SECTION OF THE FEMALE PELVIS**

Natural size, in SOMSO-Plast®. Female genital organs with bladder and rectum fully exposed and removable. Separates into 2 parts. Mounted on a green board. Height: 33 cm., width: 27 cm., depth: 12 cm., weight: 1.5 kg.



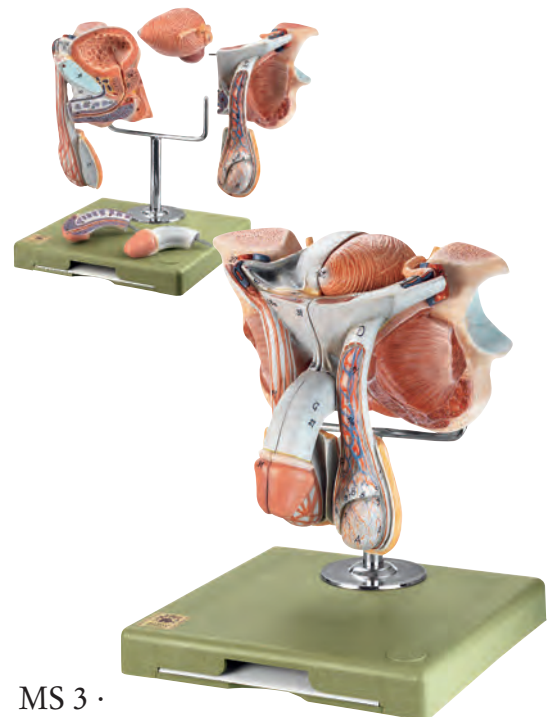
**MS 5 ·  
FEMALE GENITAL ORGANS**

Natural size, in SOMSO-Plast®. The model shows the internal and external female genital organs. Median section. The internal organs can be removed from the pelvic floor. Separates into 4 parts. On a stand with green base. Height: 26 cm., width: 18 cm., depth: 19 cm., weight: 900 g.



**MS 2 ·  
MEDIAN SECTION OF THE MALE PELVIS**

Natural size, in SOMSO-Plast®. Rectum, bladder with prostate and testicular duct and external genital organs, fully exposed, and removable. Separates into 4 parts. Mounted on a green board. Height: 33 cm., width: 27 cm., depth: 14 cm., weight: 1.3 kg.



**MS 3 ·  
MALE GENITAL ORGANS**

Natural size, in SOMSO-Plast®. Median section showing penis, prostate, bladder, seminal vesicle, spermatic cord, inguinal canal and testicle. Separates into 5 parts. On a stand with green base. Height: 21 cm., width: 18 cm., depth: 20 cm., weight: 1.2 kg.



**MS 3/1 ·  
MALE GENITAL  
ORGANS**

Natural size, in SOMSO-Plast®. Showing the internal and external organs of the small pelvis (median section). Separates into 4 parts. On a stand with green base. Height: 18 cm., width: 18 cm., depth: 18 cm., weight: 800 g.



**MS 5/1 ·  
FEMALE GENITAL  
ORGANS**

Natural size, in SOMSO-Plast®. Showing the internal and external genital organs with rectum and urinary bladder. Separates into 4 parts. On a stand and green base. Height: 16 cm., width: 18 cm., depth: 18 cm., weight: 900 g.

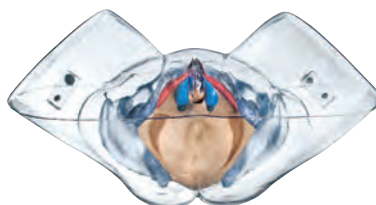


**MS 5/2 ·  
MODEL OF THE  
FEMALE SEXUAL  
ORGANS**

Natural size, in SOMSO-Plast®. Developed in cooperation with Studien- direktorin Angelika Beck. Model of the female sexual organs based on current research which makes new aspects clear - both in relation to female sexuality and sexual relationships. Height: 23 cm., width: 49 cm., depth: 26 cm., weight: 2.5 kg.

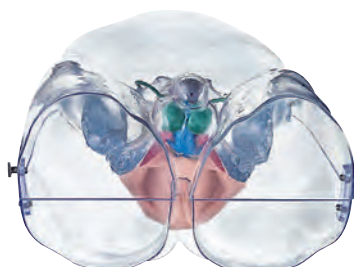


*Top-view of the model, closed*



*Model from below*

*Note: The models MS 3/2 and MS 5/2 in combination are extremely helpful to make new aspects clear – both in relation to male and female sexuality and sexual relationships.*

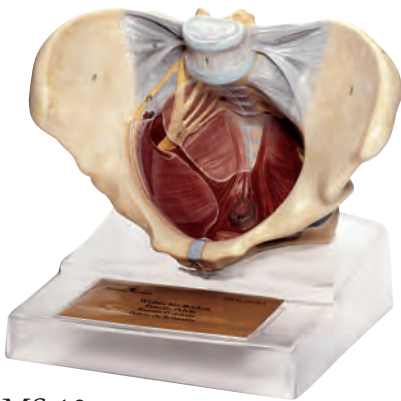


**MS 3/2 ·  
MODEL OF THE  
MALE SEXUAL  
ORGANS**

Natural size, in SOMSO-Plast®. Developed in cooperation with Studien- direktorin Angelika Beck. Model of the male sexual organs based on current research which makes new aspects clear - both in relation to male sexuality and sexual relationships. Height: 27 cm., width: 36 cm., depth: 24 cm., weight: 2.8 kg.

**MS 5/3 · CASE**  
suitable for MS 3/2 and MS 5/2

# ANATOMY 13 - GENITAL ORGANS



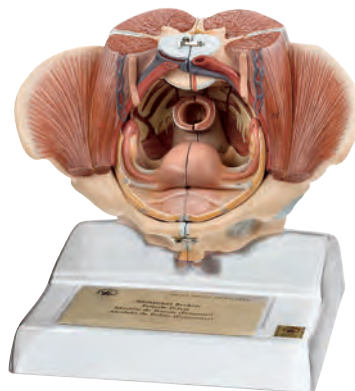
**MS 10 ·  
FEMALE PELVIC FLOOR**

Natural size, in SOMSO-Plast®. In one piece. On a removable transparent base. Height: 25.5 cm., width: 23 cm., depth: 26 cm., weight: 1.6 kg.



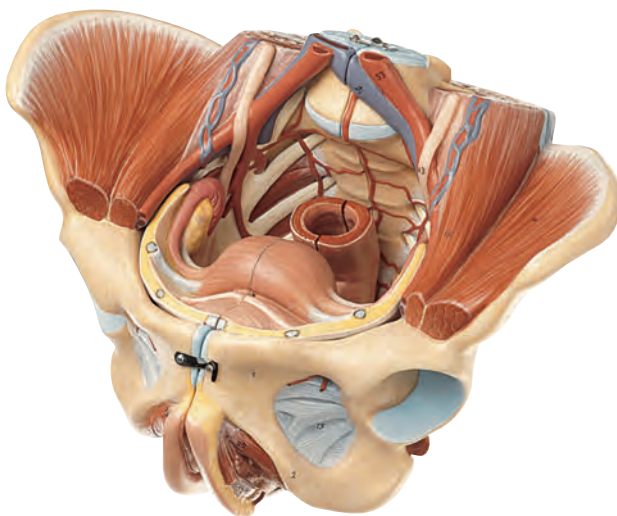
**MS 10/1 · FEMALE PELVIS  
WITH LIGAMENTOUS APPARATUS**

Natural size, in SOMSO-Plast®. In one piece. On a removable transparent base. Height: 25.5 cm., width: 23 cm., depth: 26 cm., weight: 1.7 kg.



**MS 8/2 ·  
FEMALE PELVIS**

As MS 8/1, but only separates into 2 parts. Height: 17 cm., width: 28 cm., depth: 23 cm., weight: 1.3 kg.



**MS 8/1 · FEMALE PELVIS**

Natural size, in SOMSO-Plast®. Representation of the external and internal genital organs with the pelvic muscles and the muscles of the pelvic floor as well as the network of nerves and vessels. Separates into 4 parts: pelvis, median section (2 parts) and removable inner organs (2 parts). Height: 17 cm., width: 28 cm., depth: 23 cm., weight: 1.5 kg.



**MS 8/3 · FEMALE GENITAL  
ORGANS**

natural size, in SOMSO-Plast®. Internal femal organs of MS 8/1. Separates in 2 parts. Height: 10 cm., width: 12.5 cm., depth: 12 cm., weight: 33 g.



### MS 4 · FEMALE GENITAL ORGANS

Natural size, SOMSO-Plast®, ventral and dorsal view of the internal genital organs, partly shown in section. In one piece. On a green base. Height: 22 cm., width: 25 cm., depth: 10 cm., weight: 700 g.



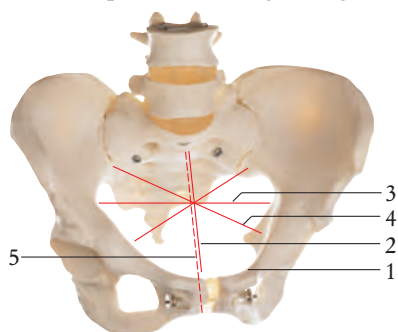
### MS 4/1 · FERTILIZATION PROCESS

Represented by two frontal sections through the female genital organs. Enlarged approx. twice, in SOMSO-Plast®. After an original from the Bundeszentrale fuer gesundheitliche Aufklaerung, Cologne, Rhine. In one piece. Mounted on a green board with explanation. Height: 32 cm., width: 90 cm., depth: 4 cm., weight: 4.3 kg.



### MS 21 · OBSTETRIC PHANTOM

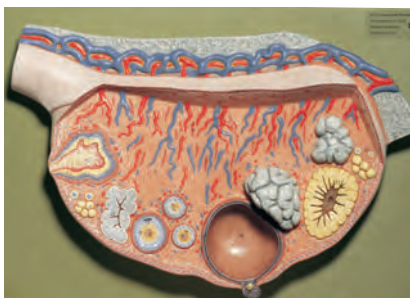
Natural size, in SOMSO-Plast®. Model of the female pelvic bones (mounted and movable) and a fetal skull (size of the head 29.8 cm) attached by a flexible metal rod. On a stand with green base. Height: 30 cm., width: 39 cm., depth: 34 cm., weight: 3 kg.



Scientifically exact in function and anatomical measurements. Measurements of the obstetric phantom MS 21 and the skeletons of female pelvis and QS 26 – QS 27/1

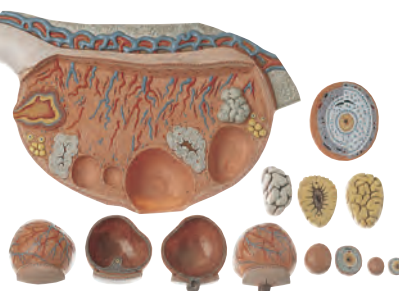
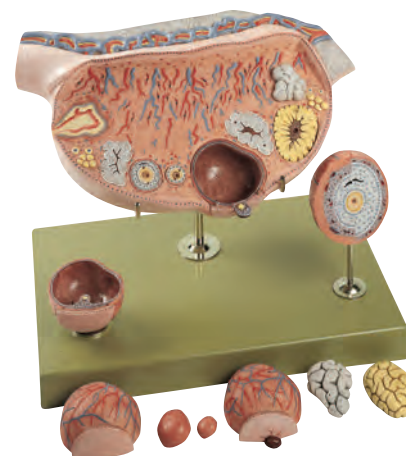
- 1 - Linea terminalis 37.9 cm
  - 2 - Conjugata vera 11 cm
  - 3 - Diameter transversa 13.2 cm
  - 4 - Diameter obliqua 12.2 cm
  - 5 - Conjugata diagonalis 12 cm
- Size of the head of the fetal cranium 29.8 cm

Illustration by permission of Prof. Dr. J. W. Rohen



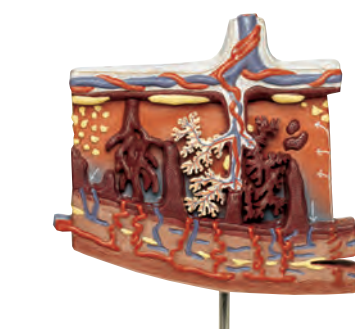
### MS 51 · RELIEF MODEL OF THE OVARY

Enlarged approx. 10 times, in SOMSO-Plast®. Presentation of the follicle in different maturation phases, the corpus rubrum, luteum and albicans. In one piece. Mounted on a green board. Height: 28 cm., width: 40 cm., depth: 8 cm., weight: 1.8 kg.



### MS 50 · MODEL OF THE OVARY

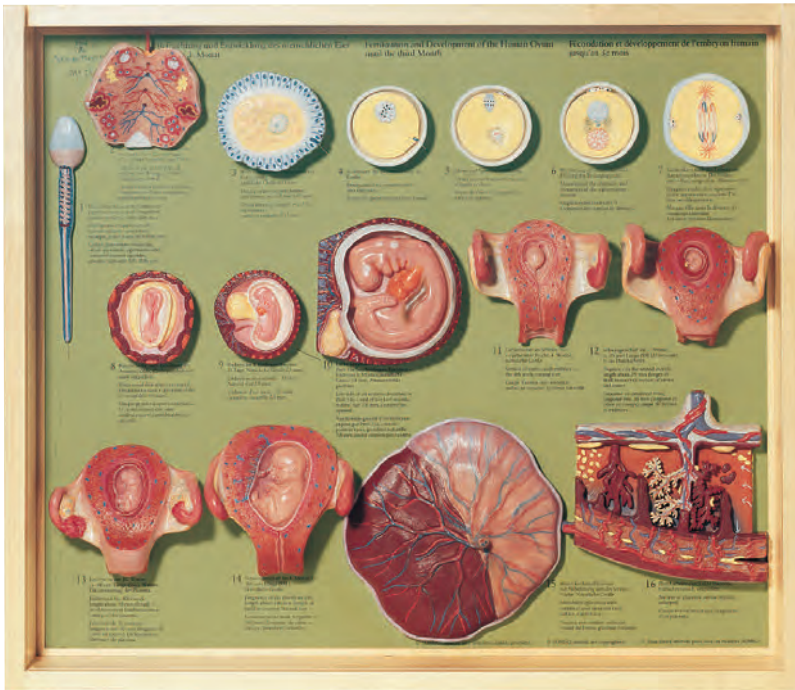
Enlarged approx. 10 times, in SOMSO-Plast®. The model shows a horizontal section parallel to the mesovarian margin with plastic presentation of the follicles in different maturation phases, the corpus rubrum, luteum and albicans as well as atretic follicles partly removable and exchangeable. Separates into 13 parts. On a stand with green base. Height: 27 cm., width: 40 cm., depth: 28 cm., weight: 2.9 kg.



### MS 47/16 · MODEL OF THE PLACENTA

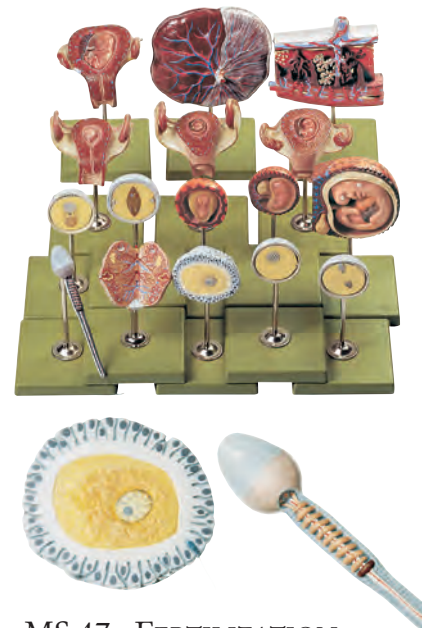
Enlarged approx. 4 times, in SOMSO-Plast®. The model shows the structure of the human placenta in half-relief, in cross section. In one piece. On a stand with green base. Height: 26.5 cm., width: 15 cm., depth: 11.5 cm., weight: 500 g.

# ANATOMY 13 - EMBRYONIC DEVELOPMENT



## MS 15 · FERTILIZATION AND DEVELOPMENT OF THE HUMAN OVUM UP TO THE 3RD MONTH

Shown by 16 different models, in SOMSO-Plast®. Collection in a display case with removable transparent cover, on a green board. Height: 49 cm., width: 57 cm., depth: 11 cm., weight: 5.7 kg.



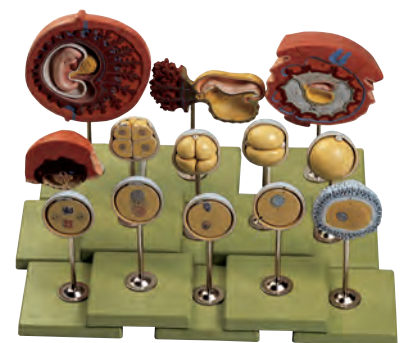
## MS 47 · FERTILIZATION AND DEVELOPMENT OF THE HUMAN OVUM UP TO THE 3RD MONTH

Shown by 16 models, in SOMSO-Plast®. Each model is mounted individually on a stand with green base. Total weight of the series 3.3 kg.



## MS 15/1 · HUMAN DEVELOPMENT UP TO THE EMBRYO AT THE END OF THE 1ST MONTH

Shown by 13 individual models, in SOMSO-Plast®. Collection in a display case with removable transparent cover, on a green board. Height: 49 cm., width: 57 cm., depth: 11 cm., weight: 5.5 kg.



## MS 46 · HUMAN DEVELOPMENT UP TO THE EMBRYO AT THE END OF THE 1ST MONTH

Shown by 13 models, in SOMSO-Plast®. Each model is individually mounted on a stand with green base. Total weight of the series 1.8 kg.



### MS 11/3 · HUMAN EMBRYO IN THE THIRD MONTH

Enlarged approx. 3 times, in SOMSO-Plast®. After Prof. Dr. Hinrichsen. The model shows an embryo in the third month of pregnancy enlarged approx. 3 times in natural detail. The embryo lies in a removable transparent amniotic sac which is supported on a stand together with part of the placenta. Separates into 3 parts. Height: 23 cm., width: 17 cm., depth: 20 cm., weight: 1.1 kg.



### MS 16/1 · FEMALE FETUS

Natural size, in SOMSO-Plast®. The model shows a female fetus at the end of the pregnancy with placenta and umbilical cord. Separates into 13 parts: placenta, umbilical cord, abdominal cover, lungs (2), heart (2), thymus, diaphragm, liver (2), stomach and intestine, body. On a green board. Height: 20 cm., width: 37 cm., depth: 45 cm., weight: 3.3 kg.



### MS 11 · EMBRYO

Enlarged approx. 25 times, in SOMSO-Plast®. The model shows an embryo, approximately 4 weeks old. In one piece. On a stand with green base. Height: 25 cm., width: 14 cm., depth: 12 cm., weight: 600 g.

### MS 16 · FETAL CIRCULATORY SYSTEM

Natural size, in SOMSO-Plast®. Model of a female fetus (before birth) with umbilical cord and placenta. The thoracic and abdominal cavities and heart exposed. Venous and arterial ducts are shown. Separates into 2 parts. Mounted on a green board. Height: 48 cm., width: 30 cm., depth: 14 cm., weight: 2.8 kg.



# THE FAMOUS ZIEGLER SERIES OF SOMSO

## 28 DAYS OLD HUMAN EMBRYO FROM THE ZIEGLER-SERIES NO. 3

The model shows the most significant structures of an embryo of about 28 days old. The left half of the body is to some extent shown in median section so that the location of the organs, characteristic of this stage of embryonic development, can be clearly identified.

The most impressive features are:  
The early development of the heart, the heart loop in the pericardial cavity, the primary formation of the embryonic intestine tube with the pharyngeal pouches in the foregut region, the position of the liver (marked in colour), the umbilical loop, the hindgut with the allantois and the beginning of the umbilicus.

Also clearly recognisable is the early formation of the neural medullary tube with the eye position. The skin has been removed from one half of the body so that the form and location of organs is easy to identify. It is also possible to get a true picture of embryonic development in these early stages as landmarks can be clearly recognised e.g. the pharyngeal grooves (branchial grooves) with the corresponding pharyngeal pouches on the right side, the developing heart (bulbo ventricular loop) and the somites.

An extremely valuable teaching model for lessons and lectures in human embryology!



The illustration shows the wax model of the human embryo (6.8 mm long) after Prof. Dr. H Pieper from the studio of Friedrich Ziegler in Freiburg.



### M 48 · ENTWICKLUNG DES MENSCHLICHEN GESICHTS

nach Prof. Peter. Die Serie besteht aus 6 zerlegbaren Modellen, die die wichtigsten Stadien der Gesichtsentwicklung des Menschen festhalten. Insgesamt 12teilig. Jedes Modell einzeln auf Stativ mit Sockel. Gewicht der Serie 9,7 kg



### M 49 · ENTWICKLUNG DES MENSCHLICHEN GEHIRNS

nach Prof. His. Die Serie besteht aus 8 Modellen (unzerlegbar). Jedes Modell einzeln auf Stativ mit Sockel. Gewicht der Serie 10,4 kg





### MS 48/3-I · HUMAN EMBRYO

Approx. 28 days old, from the Ziegler series of models No. 3, in SOMSO-Plast®. The model shows the most significant structures of an embryo about 28 days old. The left half of the body is to some extent shown in median cross section so that the different positions of the organs can be recognised in their topographical relationships - characteristic for this embryo stage. In one piece. On a green base. Height: 24 cm. (model 17 cm.), width: 18 cm., depth: 18 cm., weight: 450 g.



### M 48/3 · MODELS OF THE ANATOMY OF THE HUMAN EMBRYO

After originals from Prof. Dr. W. His, Leipzig, published by Dr. A. Ziegler, Freiburg. The series consists of 8 fixed models. Each model individually mounted on a stand with green base. The models are also available individually mounted to order no. MS 48/3-I (in SOMSO-Plast®), M 48-3-II - M 48/3-VIII (made of special palster). Weight of the series: 2.6 kg.



## MS 12 · SERIES SHOWING PREGNANCY

Natural size, in SOMSO-Plast®. Eight models showing the uterus with embryo and fetus from the first to the seventh month of pregnancy. Each model individually mounted on a stand and green base. Description and measurements as individual models MS 12/1 to MS 12/8. Comprises 14 parts. Weight of the series: 3.5 kg.

### MS 12/1 · UTERUS WITH EMBRYO IN FIRST MONTH

Natural size, in SOMSO-Plast®. In one piece. On a stand and green base. Height: 19 cm., width: 12 cm., depth: 12 cm., weight: 200 g.

### MS 12/2 · UTERUS WITH EMBRYO IN SECOND MONTH

Natural size, in SOMSO-Plast®. In one piece. On a stand with green base. Height: 18 cm., width: 12 cm., depth: 12 cm., weight: 200 g.

### MS 12/3 · UTERUS WITH EMBRYO IN THIRD MONTH

Natural size, in SOMSO-Plast®. In one piece. On a stand with green base. Height: 20 cm., width: 12 cm., depth: 12 cm., weight: 300 g.

### MS 12/4 · UTERUS WITH FETUS IN FOURTH TO FIFTH MONTH

Natural size, in SOMSO-Plast®. Fetus lying prone and removable from the uterus. Comprises 2 parts. On a stand and green base. Height: 19 cm., width: 16 cm., depth: 13 cm., weight: 400 g.

### MS 12/5 · UTERUS WITH FETUS IN FIFTH MONTH

Natural size, in SOMSO-Plast®. Fetus in upright position and removable from the uterus. Comprises 2 parts. On a stand and green base. Height: 24 cm., width: 13 cm., depth: 12 cm., weight: 400 g.

### MS 12/6 · UTERUS WITH FETUS IN FIFTH MONTH

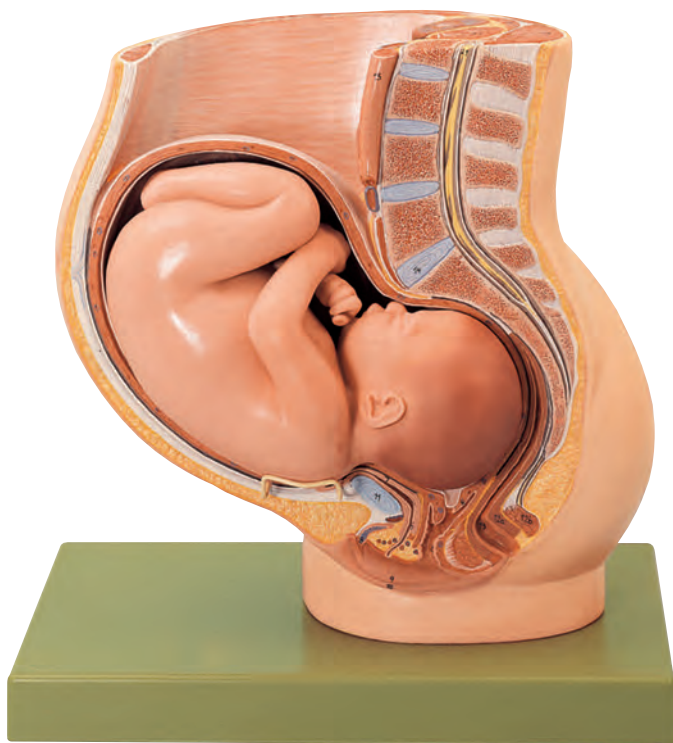
Natural size, in SOMSO-Plast®. Fetus lying on its back and removable from the uterus. Comprises 2 parts. On a stand and green base. Height: 21 cm., width: 17 cm., depth: 13 cm., weight: 500 g.

### MS 12/7 · UTERUS WITH FETUS IN SEVENTH MONTH

Natural size, in SOMSO-Plast®. Fetus in normal position and removable from the uterus. Comprises 2 parts. On a stand and green base. Height: 29 cm., width: 15 cm., depth: 15 cm., weight: 900 g.

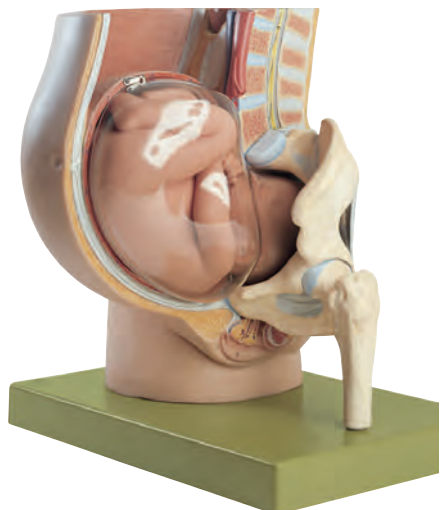
### MS 12/8 · UTERUS WITH TWIN FETUS IN FIFTH MONTH

Natural size, in SOMSO-Plast®. Normal position, each fetus is removable from the uterus. Comprises 3 parts. On a stand and green base. Height: 25 cm., width: 16 cm., depth: 15 cm., weight: 600 g.



**MS 13 ·  
PELVIS WITH UTERUS IN NINTH MONTH OF PREGNANCY**

Natural size, in SOMSO-Plast®. The model shows the right half of the female pelvis in median section. Fetus removable. After Prof. Dr. Petry. Comprises 2 parts. On a green base. Height: 41 cm., width: 39 cm., depth: 29 cm., weight: 4.9 kg.



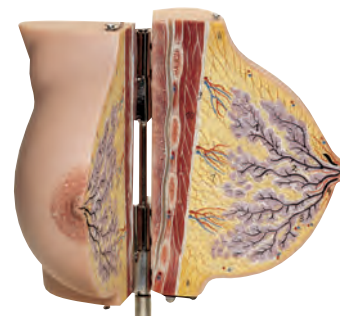
**MS 13/1 · PELVIS WITH UTERUS IN  
NINTH MONTH OF PREGNANCY**

Natural size, in SOMSO-Plast®. The model shows the right half of the female pelvis in median section. The left half shows the bones of the pelvis with femoral head and the transparent amniotic sac. Fetus removable. Comprises 4 parts. On a green base. Height: 41 cm., width: 39 cm., depth: 36 cm., weight: 5.9 kg.



**MS 41 ·  
INTERNAL  
FEMALE GENITAL  
ORGANS**

Natural size, in SOMSO-Plast®. Uterus shown with bladder and ovaries. Median section. Separates into 2 parts. On a stand and green base. Height: 20 cm., width: 12 cm., depth: 15 cm., weight: 300 g.



**MS 7 · MAMMARY GLAND IN  
RESTING POSITION**

Somewhat enlarged, in SOMSO-Plast®. After drawings by Prof. Dr. Petry. Separates into 2 halves. On a stand with green base. Height: 25 cm., width: 18 cm., depth: 18 cm., weight: 900 g.



**MS 7/1 · MAMMARY GLAND  
OF A NURSING WOMAN**

Somewhat enlarged, in SOMSO-Plast®. After diagrams by Prof. Dr. Petry. Separates into 2 halves. On a stand with green base. Height: 31 cm., width: 19 cm., depth: 19 cm., weight: 1 kg.



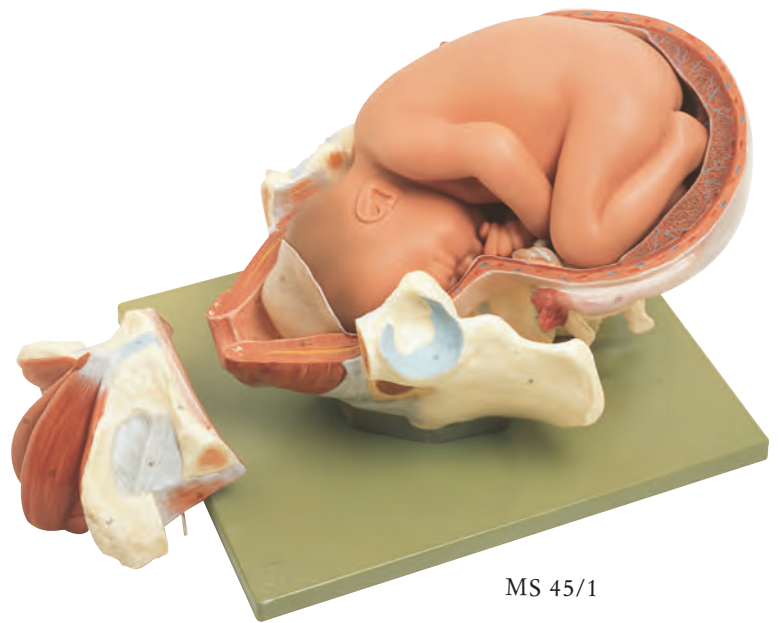
**MS 42 · INTERNAL  
FEMALE GENITAL  
ORGANS**

Natural size, in SOMSO-Plast®. As MS 41, but the uterus is shown with an embryo in the 10th week. Formation of the placenta. Separates into 2 parts. On a stand with green base. Height: 21 cm., width: 12 cm., depth: 15 cm., weight: 400 g.

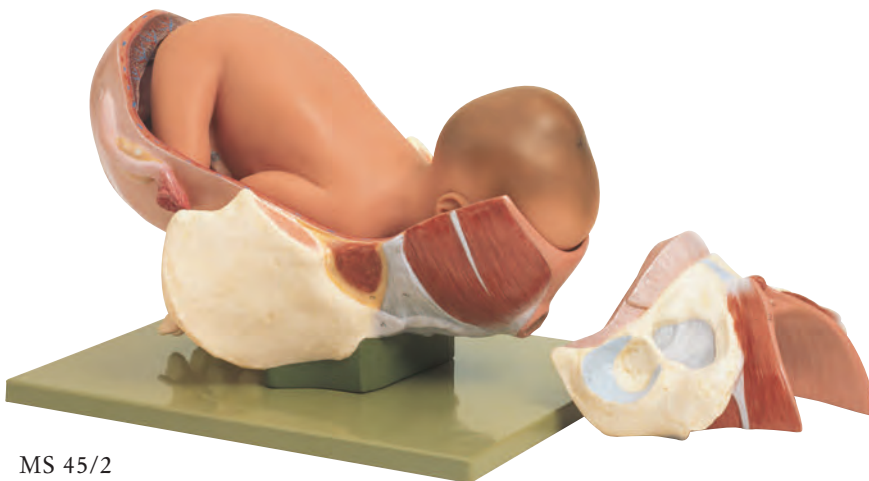
## ANATOMY 13 - BIRTH

### MS 45/1 · BIRTH - FIRST STAGE

Natural size, in SOMSO-Plast®. The model shows the beginning of the birth process. Formation of the amniotic sac. Separates into 3 parts. On a green base. Height: 25 cm., width: 29 cm., depth: 32 cm., weight: 3.4 kg.



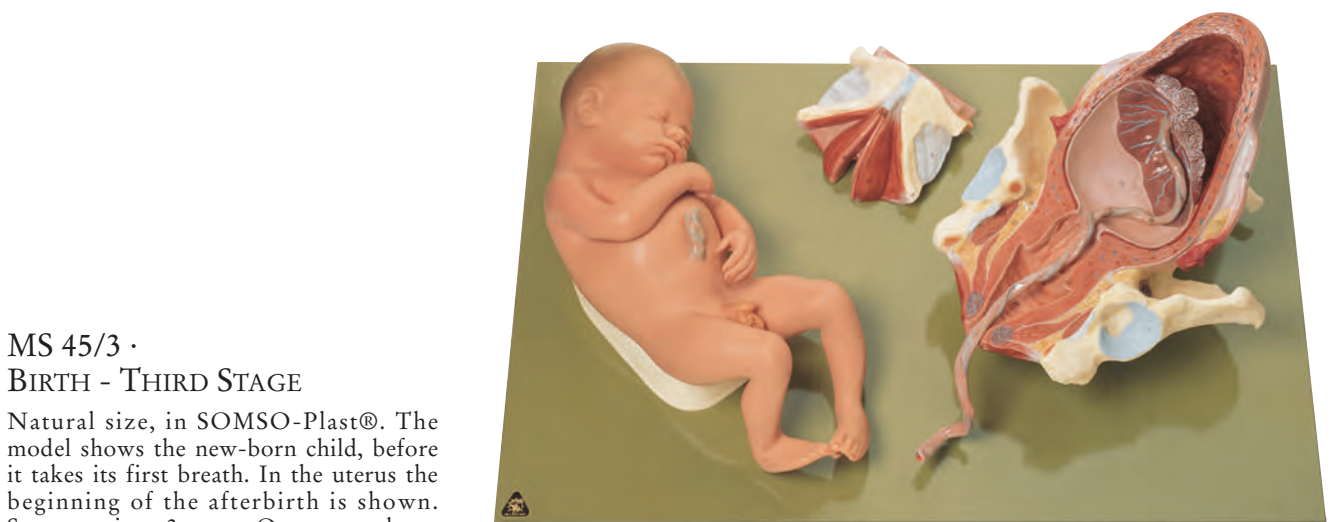
MS 45/1



MS 45/2

### MS 45/2 · BIRTH - SECOND STAGE

Natural size, in SOMSO-Plast®. The model shows the birth process. Crowning of the head and presentation of the birth swelling. Separates into 3 parts. On a green base. Height: 21 cm., width: 29 cm., depth: 38 cm., weight: 3.1 kg.



MS 45/3

### MS 45/3 · BIRTH - THIRD STAGE

Natural size, in SOMSO-Plast®. The model shows the new-born child, before it takes its first breath. In the uterus the beginning of the afterbirth is shown. Separates into 3 parts. On a green base. Height: 21 cm., width: 61 cm., depth: 38 cm., weight: 4.4 kg.



SOMSO  
MODELLE  
SINCE 1876



---

TEACHING BABIES

---

PREMATURE BABIES

---

NEWBORN BABIES

---

NURSING BABIES

---

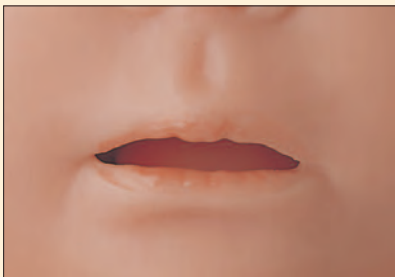
- 1. Size and weight corresponding to age*
- 2. Natural body and head mobility*
- 3. Hand painted eyes and hair*

- 4. Robust joints*
- 5. Waterproof finish*
- 6. 5-year warranty*

BABY CARE



1. For the SOMSO nursing babies MS 52 and MS 53 different colour eyes are available as a special order.



2. The models MS 52 and MS 53 are available with an open or closed mouth.



3. There is a realistic auditory canal for ear care.



4. The models MS 52, MS 53, MS 57, MS 58, MS 59, MS 60 and MS 61 have soft and movable arms and legs.



5. Each baby has its own SOMSO serial number for queries about the model.



**MS 33/E ·  
DOLL FOR BABY CARE**  
In SOMSO-Plast®. Ball joints allowing natural movement of head, arms and legs. Open anus. A perfect combination doll for bathing, dressing practice and nursing exercises. With artificial brown eyes. Undressed. Size of the head: 36 cm., length: 49 cm., weight: 3 kg.

**MS 33/E-B ·  
DOLL FOR BABY CARE**  
As MS 33/E, but black in colour

**MS 43 ·  
DOLL FOR  
BABY CARE**  
Corresponding to the size and weight of a 6-week-old baby, in SOMSO-Plast®. Suitable for bathing in warm water. With ball joints, allowing natural movement of arms and legs. Undressed. Size of the head 38.9 cm., length: 56 cm., weight: 3.3 kg.



**MS 43/B ·  
DOLL FOR  
BABY CARE**  
As MS 43, but black in colour.



**MS 43/3 ·  
DOLL FOR BABY CARE**  
As MS 43, but corresponding to the size and weight of a 6 week old male infant, in SOMSO-Plast®. Size of the head 38.9 cm., length: 56 cm., weight: 3.3 kg.

**MS 43/3 B ·  
DOLL FOR BABY CARE**  
As MS 43/3, but black in colour.



### MS 52 · NURSING BABY, FEMALE

Corresponding to the size and weight of an approx. 6 week old baby, in SOMSO-Plast®. With ball joints, head moves easily and tilts backwards. Painted eyes. A perfect combination doll for bathing, dressing practice and nursing exercises. Nose and ears are open as is anus for insertion of thermometer. Undressed. Size of the head 35.8 cm., length: 54 cm., weight: 3.3 kg.

#### MS 52/1 · NURSING BABY, FEMALE

As MS 52, but with umbilical cord.

#### MS 52/A · NURSING BABY, FEMALE

As MS 52, but an Asian Nursing Baby. Size of the head 35.8 cm., length: 54 cm., weight: 3.3 kg.

#### MS 52/B · NURSING BABY, FEMALE

As MS 52, but black in colour. Size of the head 35.8 cm., length: 54 cm., weight: 3.3 kg.

MS 53

### MS 53 · NURSING BABY, MALE

Corresponding approx. to the size and weight of a 6-week-old baby, in SOMSO-Plast®. With ball joints, head moves easily and tilts backwards. Painted eyes. A perfect combination doll for bathing, dressing practice and nursing exercises. Nose and ears are open as is anus for insertion of thermometer. Undressed. Size of the head 35.4 cm., length: 54 cm., weight: 3.5 kg.

#### MS 53/1 · NURSING BABY, MALE

As MS 53, but with umbilical cord. (Not. ill.)

#### MS 53/A · NURSING BABY, MALE

As MS 53, but an Asian Nursing Baby.

#### MS 53/B · NURSING BABY, MALE

As MS 53, but black in colour.



# ANATOMY 13 - BABY CARE



## MS 57 · NEWBORN BABY, FEMALE

In soft SOMSO-Plast®. With ball joints, head moves easily and tilts backwards. For bathing, dressing practice, and nursing exercises. Undressed. Size of the head 32.6 cm., length: 45 cm., weight: 1.9 kg.

## MS 57/B · NEWBORN BABY, FEMALE

As MS 57, but black in colour.

## MS 56 · NEWBORN BABY, FEMALE

Natural size, in soft SOMSO-Plast®. Model is flexible. Size of the head 31.7 cm., length: 44 cm., weight: 1.8 kg.

## MS 56/B · NEWBORN BABY, FEMALE

As MS 56, but black in colour. Size of the head 31.7 cm., length: 44 cm., weight: 1.8 kg.



## MS 59 · NEWBORN BABY, FEMALE

In soft SOMSO-Plast®. With ball joints, head moves easily and tilts backwards. With open mouth, umbilical cord and anus. For bathing, dressing practice, and nursing exercises. Undressed. Size of the head: 34 cm., length: 46 cm., weight: 2.2 kg.

## MS 59/B · NEWBORN BABY, FEMALE (NOT ILL.)

As MS 59, but black in colour.

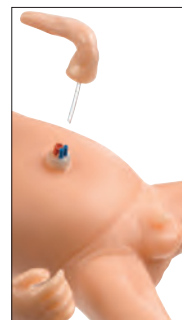


## MS 58 · NEWBORN BABY, MALE

In soft SOMSO-Plast®. With ball joints, head moves easily and tilts backwards. With open mouth, umbilical cord and anus. For bathing, dressing practice, and nursing exercises. Undressed. Size of the head: 34 cm., length: 46 cm., weight: 2.2 kg.

## MS 58/B · NEWBORN BABY, MALE

As MS 58, but black in colour.



MS 60



MS 61

## MS 60 · PREMATURE INFANT BABY, MALE

Corresponds approx. to a baby in 27th week of pregnancy. In SOMSO-Plast®. With movable arms and legs. Undressed. Size of the head: approx. 25.5 cm., length: approx. 35.5 cm., weight: approx. 670 g.

## MS 61 · PREMATURE INFANT BABY, FEMALE

Corresponding approx. to a baby in 27th week of pregnancy. In SOMSO-Plast®. With movable arms and legs. Undressed. Size of the head: approx. 25.5 cm., length: approx. 35.5 cm., weight: approx. 690 g.

