



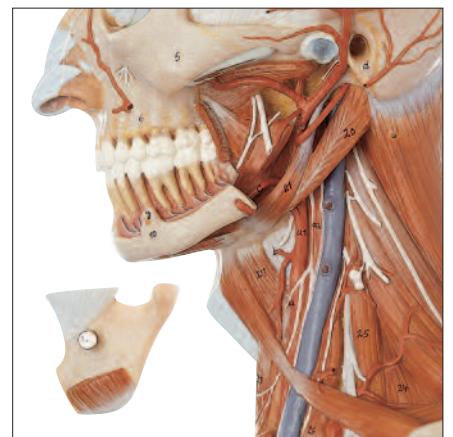
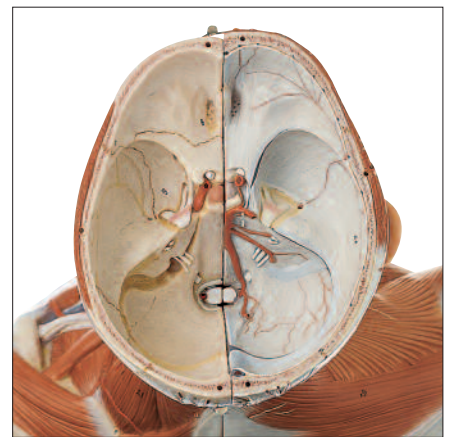
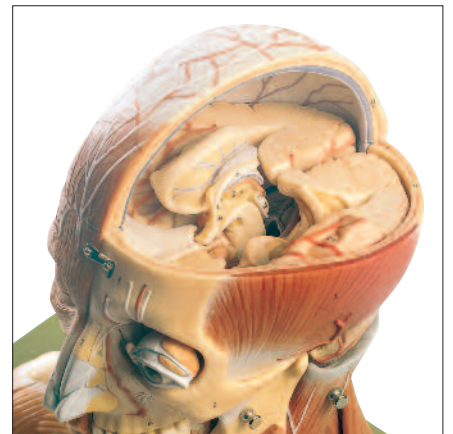
SOMSO
MODELLE
SINCE 1876

Nature *is our* *Model*

HEAD
NERVOUS SYSTEM



Medical Simulator
INNOVACIÓN EN EDUCACIÓN



BS 3 · HEAD AND NECK

Natural size, in SOMSO-Plast®. The right side shows the mimic muscular system with the deep-set muscles. The left temporomaxillary joint and the sternocleidomastoid muscle are removable to show the carotid trigone. May be separated medially into two halves. After taking off the cranium, the 8 part brain with arteries can be removed. Separates into 19 parts: Trapezius muscle, pectoralis major muscle, deltoid muscle and clavicle, eye with muscles and optic nerve. On a green base. Height: 37 cm., width: 48 cm., depth: 30 cm., weight: 6.1 kg.



BS 1 · SITUS OF THE BASE OF THE SKULL

Natural size, in SOMSO-Plast®. Showing the dura mater, the 12 pairs of cranial nerves and the basilar artery with branchings. In one piece. On a green base. Height: 19 cm., width: 18 cm., depth: 21 cm., weight: 800 g.



BS 5 · BASE OF THE HEAD

With removable 8 part brain with arteries. Natural size, in SOMSO-Plast®. The dura mater, the 12 pairs of cranial nerves and the basilar artery are shown. Comprises 9 parts in total. On a green base. Height: 22 cm., width: 18 cm., depth: 20 cm., weight: 1.5 kg.



BS 2 · PROPORTIONS OF THE DURA MATER

Natural size, in SOMSO-Plast®. Showing the proportions of the dura mater and the sinus of the dura mater. The 12 pairs of cranial nerves and the basilar artery with branchings are exposed. Comprises 2 parts. On a green base. Height: 23 cm., width: 18 cm., depth: 21 cm., weight: 900 g.



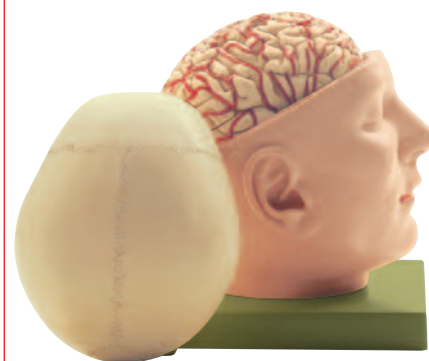
BS 2/1 · DURA MATER

Natural size, in SOMSO-Plast®. Showing the sinus durae matrix, falx cerebri and tentorium cerebelli. In one piece. Weight: 200 g.



BS 5/1 · BASE OF THE HEAD

Natural size, in SOMSO-Plast®. As BS 5, but showing the proportions of the dura mater (sinus of the dura mater, falx of the cerebrum, and the tentorium of the cerebellum are shown). Comprises 10 parts in total. On a green base. Height: 24 cm., width: 18 cm., depth: 20 cm., weight: 2 kg.



BS 5/2 · BASE OF THE HEAD

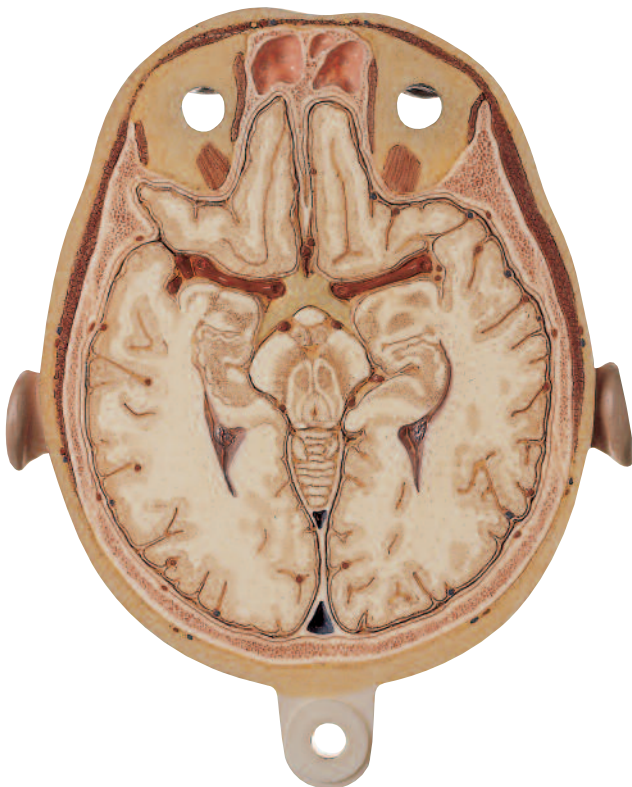
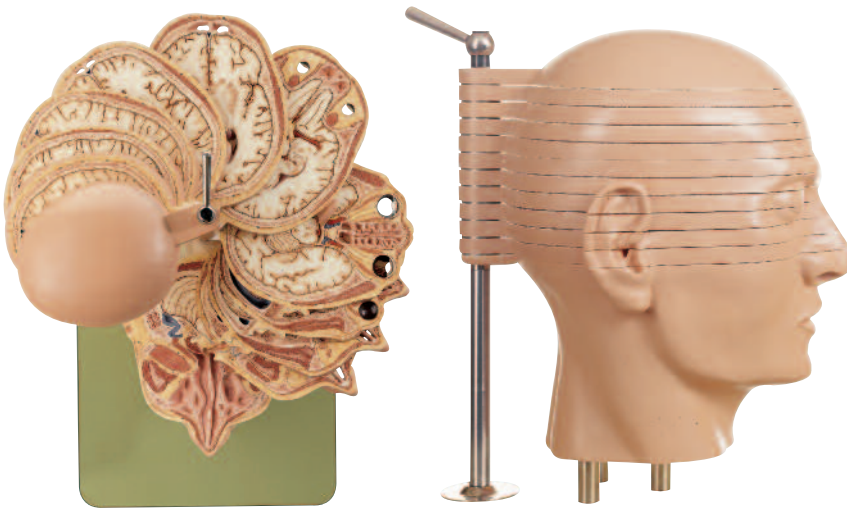
Natural size, in SOMSO-Plast®. As BS 5, but additionally with cranium. Comprises 10 parts in total. On a green base. Height: 23.5 cm., width: 18 cm., depth: 20 cm., weight: 2 kg.

**BS 5/5 · ANATOMICAL SECTIONAL MODEL OF THE HEAD
(COMBINED WITH CORRESPONDING MR-FIGURES)**

According to Prof. Dr. J. W. Rohen. The model shows the anatomical structures of 10 consecutive horizontal sections through the human head oriented to the plane usual in CT and MR imaging (CA-CP plane) and which have the same section thickness (0.8 cm). The sections were modelled on original preparations and are illustrated from above. Each cross section pivots and can be removed from the stand. Natural size in special plastic. With explanatory booklet on the green base. Height: 34 cm., width: 46 cm., depth: 30 cm., weight: 6.2 kg.

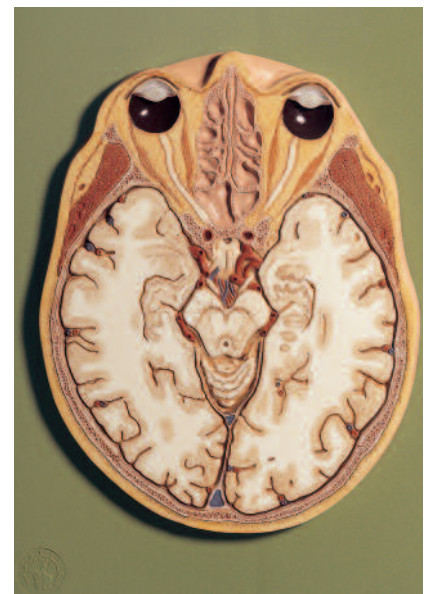
BS 5/5-1 - BS 5/5-10

Individual models of cross section levels 1 - 10 from the anatomical cross section model BS 5/5.



**BS 5/6 · ANATOMICAL SECTION MODEL OF THE HEAD
(COMBINED WITH CORRESPONDING MR-FIGURES)**

According to Prof. Dr. J. W. Rohen. Design as BS 5/5 but with section relief in single colour. Height: 34 cm., width: 46 cm., depth: 30 cm., weight: 6.2 kg.



BS 6/2 · HORIZONTAL SECTION OF THE HEAD

Natural size, at the plane of the orbit, in special plastic. In one piece. Mounted on a green board with explanation, under a removable transparent cover. Height: 26 cm., width: 32 cm., depth: 4 cm., weight: 900 g.



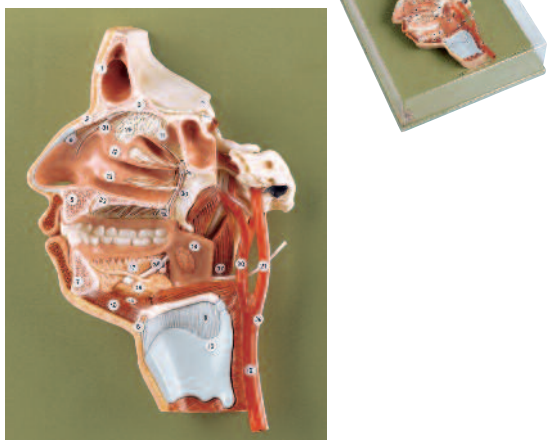
BS 18 · HEAD WITH MUSCLES AND VESSELS

About 3/4 natural size, in SOMSO-Plast®. Separates into 5 parts: head, cranium, right half of brain, and left half of brain, in 2 parts. Removable from green base. Height: 28 cm., width: 18 cm., depth: 19 cm., weight: 1.9 kg.



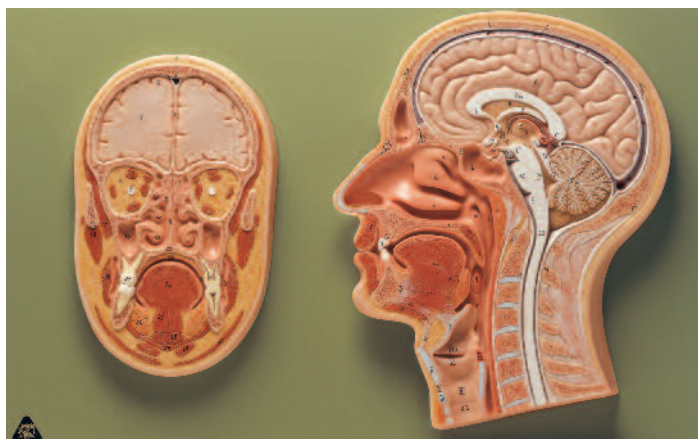
BS 6/1 · MEDIAN SECTION OF THE HEAD

Natural size, in SOMSO-Plast®. Not detachable. Mounted on a green board. Height: 32 cm., width: 23 cm., depth: 4 cm., weight: 1.3 kg.



BS 8/1 · MODEL OF THE HEAD

Natural size, in SOMSO-Plast®. Showing the interior parts of the cavity of mouth and pharynx with network of vessels. In one piece. Mounted on a green board under a removable transparent cover. Height: 25.5 cm., width: 32 cm., depth: 9 cm., weight: 1 kg.



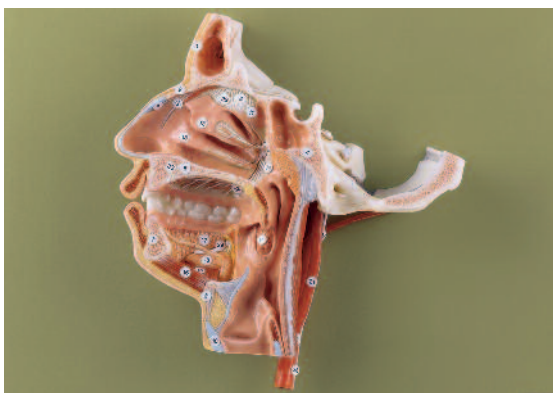
BS 43 · MEDIAN AND FRONTAL SECTION OF THE HEAD

Natural size, in SOMSO-Plast®. Mounted on a green board. Height: 30 cm., width: 48 cm., depth: 4 cm., weight: 2.7 kg.



BS 16 · NERVES AND BLOOD-VESSELS ON THE FACIAL SKULL

Natural size, in SOMSO-Plast®. Showing the muscles, nerves and vessels, in particular trigeminal nerve and facial nerve. The tongue is removable. Separates into 2 parts. On a stand with green base, under a removable transparent cover. Height: 21 cm., width: 32 cm., depth: 19 cm., weight: 1.1 kg.



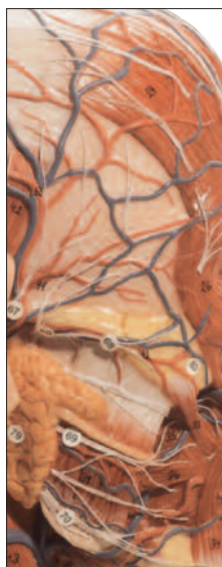
BS 8 · MODEL OF THE HEAD

Natural size, in SOMSO-Plast®. Showing, in right median section, the muscles, nerves and vessels in particular the cavities of nose and mouth. In one piece. Mounted on a green board under a removable transparent cover. Height: 25.5 cm., width: 32 cm., depth: 9 cm., weight: 900 g.

BS 7 · MODEL OF THE HEAD

Natural size, in SOMSO-Plast®. Showing the muscles, nerves and vessels at the right of the facial skull, in particular the trigeminal nerve and the facial nerve, network of vessels and nerves of the orbit and the upper and lower jaw. In one piece. Mounted on a green board under a removable transparent cover. Height: 25.5 cm., width: 32 cm., depth: 9 cm., weight: 1 kg.





BS 9 · HALF OF THE HEAD

Natural size, in SOMSO-Plast®. The model shows the mimic muscular system of the right half of the head with the main superficial arteries, veins and nerves including the area of the neck. The median section shows brain, nose, mouth and pharynx, larynx and vertebral column of the neck. In one piece. On a stand with green base. Height: 41 cm., width: 18 cm., depth: 22 cm., weight: 1.3 kg.



BS 18/1 · HEAD WITH MUSCLES

Natural size, in SOMSO-Plast®. Median Section. Separates into 10 parts: right and left half of the head, left half of the brain (4), eye with muscles and optic nerve, right half of the tongue, larynx (2). Removable from green base. Height: 31 cm., width: 26 cm., depth: 32 cm., weight: 2.8 kg.



BS 18/2 · HEAD WITH MUSCLES

Natural size, in SOMSO-Plast®. Separates into 10 parts: base of the head, cranium, eye, falx cerebri, right half of the brain, left half of the brain (4), cervical vein. Removable from green base. Height: 31 cm., width: 26 cm., depth: 32 cm., weight: 2.9 kg.



BS 17 · MODEL OF THE HEAD

Natural size, in SOMSO-Plast®. The model shows, in median section, part of the cervical vertebrae modelled three-dimensionally. Not detachable. On a green base. Height: 39 cm., width: 18 cm., depth: 23 cm., weight: 1.2 kg.



BS 20 · BRAIN

Natural cast, in SOMSO-Plast®. Separates into 8 parts: frontal and parietal lobes (2), temporal and occipital lobes (2), medulla (2), cerebellum (2). On a base. Height: 15 cm., width: 16 cm., depth: 17 cm., weight: 1.1 kg.



BS 20/1 · HALF OF THE BRAIN

Natural cast, in SOMSO-Plast®. Separates into 4 parts: frontal and parietal lobes, temporal and occipital lobes, medulla and cerebellum. On a base. Height: 15 cm., width: 17 cm., depth: 6 cm., weight: 650 g.

BS 21 · BRAIN

Natural cast, in SOMSO-Plast®. Median Section. Separates into 2 parts. On a base. Height: 15 cm., width: 16 cm., depth: 17 cm., weight: 800 g.



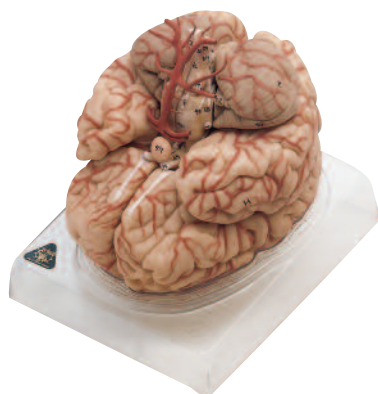
BS 22 · BRAIN

Natural cast, in SOMSO-Plast®. Median section. Right half separates into cerebellum, medulla and cerebral lobe. Left half in one piece. Separates into 4 parts. On a base. Height: 15 cm., width: 15 cm., depth: 17 cm., weight: 1.1 kg.



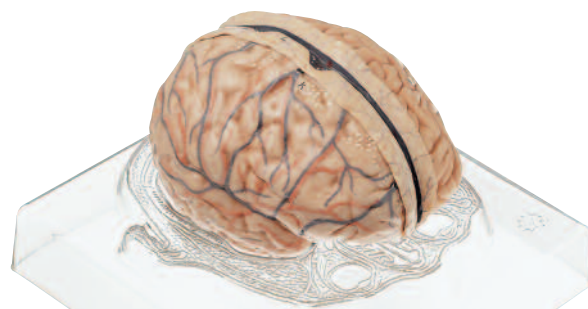
BS 45 · 5 SECTION MODELS OF THE BRAIN

Natural size, in SOMSO-Plast® and with the following features: 1. Left hemisphere. Cortical relief of the cerebrum and cerebellum; 2. Median section through the brain; 3. Cerebral ventricle (opened) and stem ganglia (viewed from above); 4. Horizontal section through the left hemisphere. Right: Lateral ventricle (opened) and adjoining nuclei with choroid plexus (cf. No. 3); 5. Frontal section through the brain and brain stem showing the subcortical nuclei and projection tracts. In display case with transparent cover. Height: 49 cm., width: 57 cm., depth: 10 cm., weight: 5.1 kg.



BS 23 · BRAIN WITH ARTERIES

Natural cast, in SOMSO-Plast®. With representation of arterial network of vessels. Separates into 9 parts: frontal and parietal lobes (2), temporal and occipital lobes (2), medulla (2), cerebellum (2), and basilar artery. On a base. Height: 17 cm., width: 16 cm., depth: 17 cm., weight: 1.2 kg.



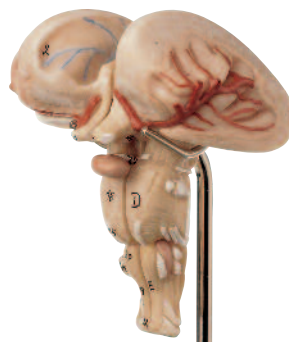
BS 23/3 · MODEL OF BRAIN

Natural size, in SOMSO-Plast®. The model rests in its natural position on a transparent base which has a cross sectional relief drawing. The right half of the brain shows the meninges with the arteries and veins. The dura mater can be removed and the left half of the brain separates into four parts: Cerebrum, in two parts, with front cutaway, temporal lobes with cerebellum and brain stem. Comprises six parts in total. Height: 15 cm., width: 20 cm., depth: 22 cm., weight: 1.2 kg.



BS 23/1 · BRAIN WITH ARTERIES

Natural cast, in SOMSO-Plast®. As BS 23, but mounted in normal position. Separates into 9 parts. On a stand with green base. Height: 27 cm., width: 18 cm., depth: 19 cm., weight: 1.2 kg.



BS 23/2 · MEDULLA

Natural cast, in SOMSO-Plast®. Median Section. An invaluable model for medical students. Separates into 2 parts. On a stand with green base. Height: 15 cm., width: 12 cm., depth: 12 cm., weight: 200 g.



BS 24 · VENTRICULAR CAVITIES OF THE BRAIN

Natural size, in SOMSO-Plast®. From a specimen in the Anatomical Institute of Wuerzburg. In one piece. On a stand with green base. Height: 15 cm., width: 12 cm., depth: 12 cm., weight: 200 g.

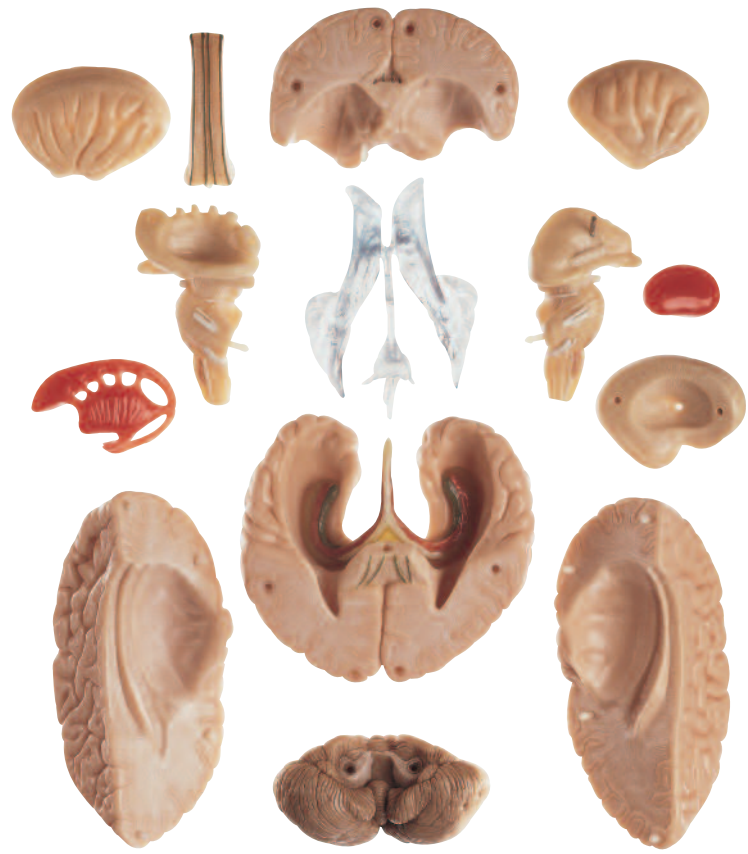


BS 23/4 · MODEL OF BRAIN

Natural size, in SOMSO-Plast®. As BS 23/1, but with Dura Mater, falx Cerebri and brain with indicated cytoarchitectural areas. Separates into 10 parts. On a stand with green base. Height: 30 cm., width: 18 cm., depth: 19 cm., weight: 1.4 kg.

BS 25 · MODEL OF BRAIN
IN 15 PARTS

Natural size, in SOMSO-Plast®, after Prof. Dr. J. W. Rohen, Anatomical Institute of the University Erlangen. Separates into 15 parts: cerebral hemisphere (2), temporal and occipital lobes with limbic system, cerebellum, frontal lobe, corpus callosum, brain stem (2), corpus striatum, insula (2), nucleus lentiformis (left), internal capsule (right), ventricles of the brain, base of the skull as base, on a green board. Height: 23 cm., width: 15 cm., depth: 18 cm., weight: 1.8 kg.



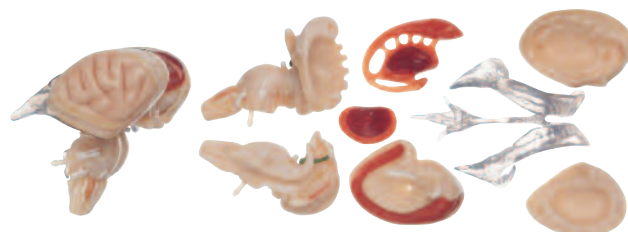


BS 25/1 · MODEL OF BRAIN WITH INDICATED CYTOARCHITECTURAL AREAS

Natural size, in SOMSO-Plast®. After Prof. Dr. J. W. Rohen, Department of Anatomy of the University Erlangen. Separates into 15 parts: cerebral hemisphere (2), temporal and occipital lobes with limbic system, cerebellum, frontal lobe, corpus callosum, brain stem (2), corpus striatum, insula (2), nucleus lentiformis (left), internal capsule (right), ventricles of the brain, base of the skull as base, on a green board. Height: 23 cm., width: 15 cm., depth: 18 cm., weight: 1.8 kg.

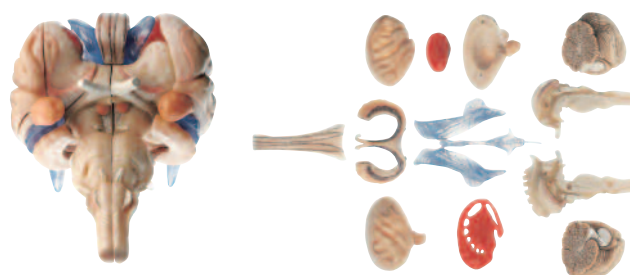
BS 25/2 · MODEL OF BRAIN STEM IN 8 PARTS

Natural size, in SOMSO-Plast®. After Prof. Dr. J. W. Rohen, Department of Anatomy of the University Erlangen. Separates into 8 parts: brain stem (2), corpus striatum, insula (2), nucleus lentiformis (left), internal capsule (right) and ventricles of the brain. On a stand with green base. Height: 16 cm., width: 12 cm., depth: 12 cm., weight: 380 g.



BS 25/2-T · MODEL OF BRAIN STEM IN 12 PARTS

Natural cast, in SOMSO-Plast®. Brain Stem from the transparent brain model BS 25/T. Separates into 12 parts. The ventricular cavities of the brain is extremely well modelled. A perfect teaching aid for medical students. On a stand with green base. Height: 16 cm., width: 12 cm., depth: 12 cm., weight: 380 g.





BS 25/T · TRANSPARENT BRAIN MODEL

Natural size, in SOMSO-Plast®. After Prof. Dr. J. W. Rohen, Department of Anatomy of the University Erlangen. Separates into 15 parts: transparent left cortex of the brain with sinus sagittalis connected with part of the base of the skull, the cervical vertebral column with spinal cord and vertebral artery; right transparent cortex of the brain, right half of the sphenoid bone, removable brain stem (separates into right and left halves), right and left insular cortex, left striate body, right capsular interna, corpus callosum, fornix, limbic system and ventricle system as a whole, right and left halves of the cerebellum. On a stand with green base. Height: 30 cm., width: 18 cm., depth: 20 cm., weight: 1.1 kg.

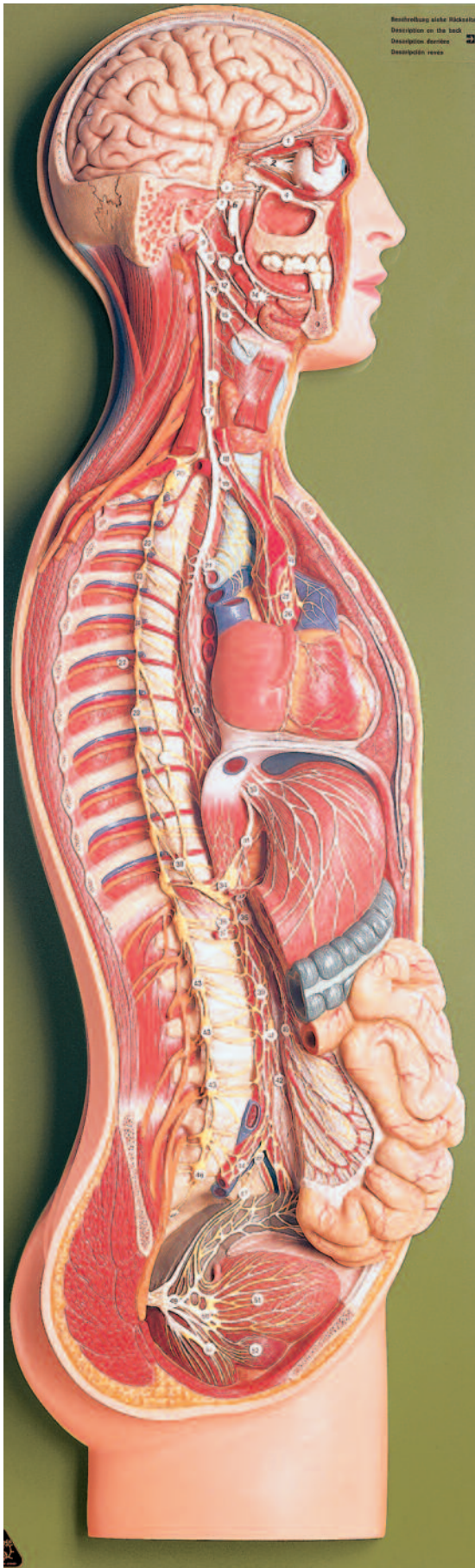


Design by experts

The manufacture of SOMSO anatomical models is a complex process. Many stages are needed to achieve scientific accuracy.

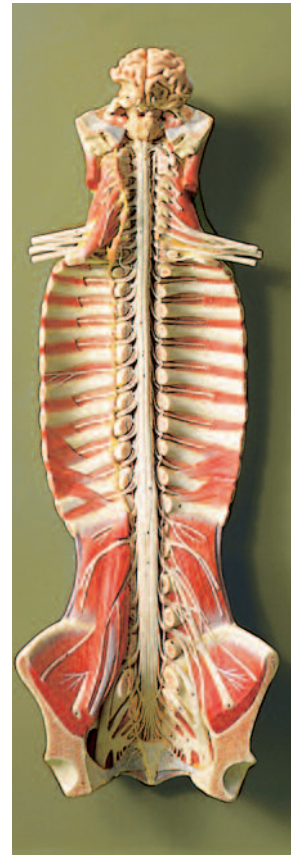
Great knowledge is required, not only scientifically but also by the modeller. Close co-operation with scientific experts and our own modellers, results in SOMSO always achieving the highest standards. World-wide acceptance by experts gives approval to the continuing development of SOMSO models.





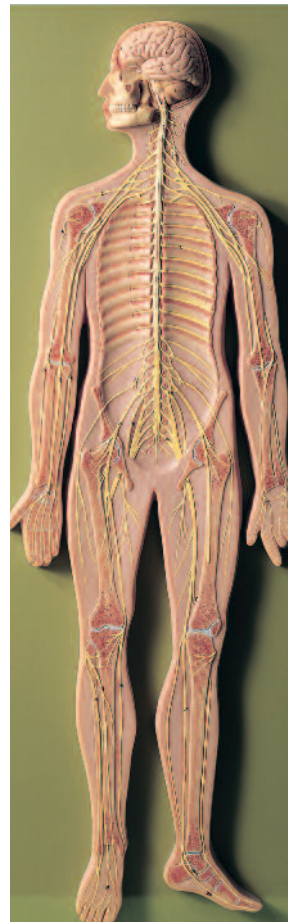
**BS 31 ·
SPINAL CORD IN
THE SPINAL CANAL**

Seen from the ventral side, natural size, in SOMSO-Plast®. The model shows the brain stem and the spinal cord, as well as the nerve branches, up to the coccygeal plexus. On the left side the sympathetic trunk with its connections to the central nervous system are shown. In one piece. On a green board. Height: 90 cm., width: 32 cm., depth: 19 cm., weight: 5.5 kg.



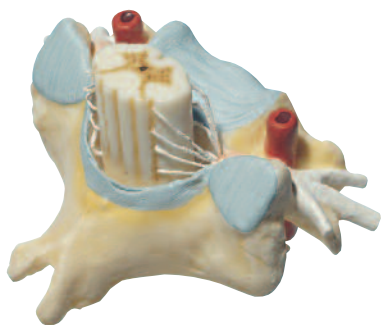
**BS 27 ·
NERVOUS SYSTEM**

Relief model, about 1/2 natural size, in SOMSO-Plast®. Schematic presentation of the central and peripheral nervous system. In one piece. Mounted on a green board. Height: 91 cm., width: 32 cm., depth: 6 cm., weight: 5.5 kg.



**BS 26/1 ·
SYMPATHETIC
NERVOUS SYSTEM**

About 2/3 natural size, in SOMSO-Plast®. Relief presentation of the right side of the body in particular the thoracic part, the cardiac plexus, and the pelvic plexus. In one piece. Mounted on a green board. Height: 74 cm., width: 25.5 cm., depth: 10 cm., weight: 4.3 kg.



BS 29 · CERVICAL VERTEBRA (C VI) WITH SPINAL CORD

Natural size, in SOMSO-Plast®. Spinal nerves, spinal ganglion and vertebral artery are shown. Spinal cord also shown in transverse section. In one piece. On a stand with green base. Height: 14 cm., width: 12 cm., depth: 12 cm., weight: 100 g.



BS 28/1 · THORACIC VERTEBRA (TH II) WITH SPINAL CORD

Natural size, in SOMSO-Plast®. Spinal nerves, spinal ganglion and spinal cord are shown in cross-section. In one piece. On a stand with green base. Height: 14 cm., width: 12 cm., depth: 12 cm., weight: 200 g.



BS 28 · LUMBAR VERTEBRA (L II) WITH LUMBAR REGION OF SPINAL CORD

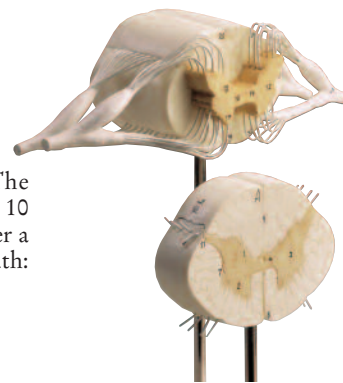
Natural size, in SOMSO-Plast®. Nerve endings, filum terminale and cauda equina of the spinal cord (also in cross-section) are shown. Separates into 2 parts. On a stand with green base. Height: 15 cm., width: 12 cm., depth: 13 cm., weight: 200 g.



BS 32/37

BS 32/37 · SPINAL CORD WITH NERVE BRANCHES

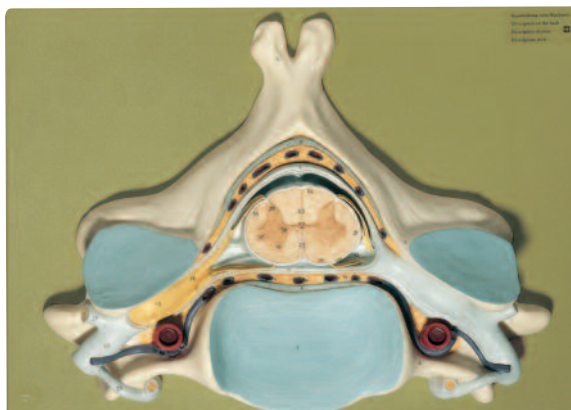
Enlarged approx. 5 times, in SOMSO-Plast®. The section through the spinal cord is enlarged approx. 10 times. In one piece. Mounted on a green board under a removable transparent cover. Height: 8.5 cm., width: 32.5 cm., depth: 19 cm., weight: 0.7 kg.



BS 33

BS 33 · SPINAL CORD WITH NERVE BRANCHES

as BS 32/37, but each part is on a stand with green base. In SOMSO-Plast®. Separates into 2 parts. Height: 22 cm., width: 20 cm., respectively 12 cm., depth: 12 cm., weight: 400 g.



BS 30 · FIFTH CERVICAL VERTEBRA

Enlarged approx. 7 times, in SOMSO-Plast®. The model shows the spinal cord in transverse section with spinal nerves and spinal ganglion, artery and vein of the cervical vertebra. In one piece. Mounted on green board. Height: 28 cm., width: 40 cm., depth: 10 cm., weight: 1.6 kg.

ANATOMY 2/3 - NERVOUS SYSTEM



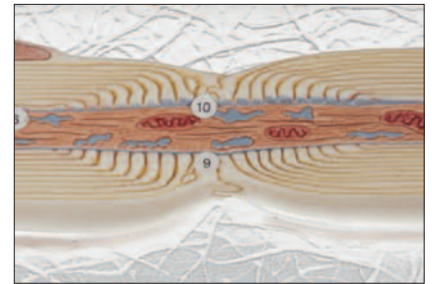
BS 35/1 · NEURON

Enlarged approx. 2500 times, in SOMSO-Plast®, with regard to perceptible light and electron microscopy structures. With separate medullated nerve fibre. In one piece. Mounted on a green board. Height: 40 cm., width: 28 cm., depth: 14 cm., weight: 1.5 kg.



BS 35 · NEURON

Enlarged approx. 2500 times, in SOMSO-Plast®. Consisting of nerve cell body and medullated nerve fibre. In electron microscope enlargement. Separates into 3 parts. Removable from base. Height: 22 cm., width: 53 cm., depth: 17 cm., weight: 2.2 kg.



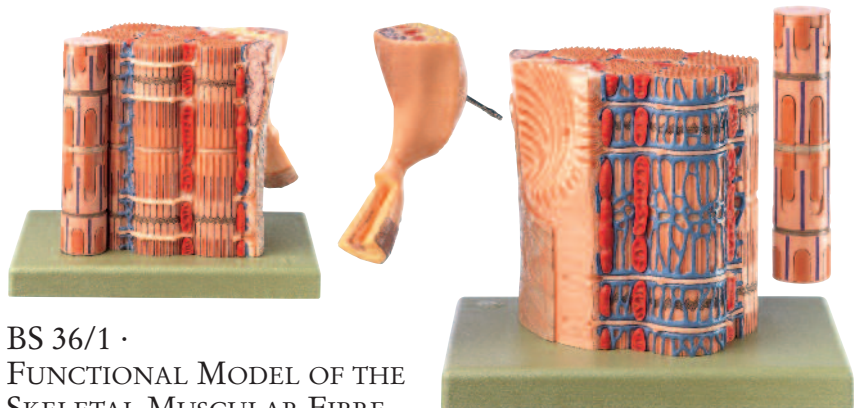
BS 35/3 · MODEL OF A SYNAPSE

Many times enlarged, in SOMSO-Plast®. After Christian Gross, Head of Biology Department (retired). Neurotubules, neuro-filaments, synaptic vesicles and the postsynaptic apparatus with membrane structure. In one piece. On a base. Height: 21 cm., width: 22 cm., depth: 22 cm., weight: 900 g.



BS 36 · TRANSVERSELY STRIATED MUSCULAR FIBRE WITH MOTOR END-PLATE

Enlarged approx. 4000 times, in SOMSO-Plast®. Modelled from recent electron-microscopy. In one piece. On a green base. Height: 20 cm., width: 18 cm., depth: 18 cm., weight: 1 kg.



BS 36/1 · FUNCTIONAL MODEL OF THE SKELETAL MUSCULAR FIBRE

Enlarged approx. 40000 times, in SOMSO-Plast®, after Prof. Dr. med. Elke Lütjen-Drecoll and Prof. Dr. J. W. Rohen, Anatomical Institute of the University Erlangen. Detachable in 3 pieces. On a green base. Height: 18 cm., width: 26 cm., depth: 18 cm., weight: 1.5 kg.