

# SOMSO AND THE ZIEGLER MODELS

In 1936 my father, Marcus Sommer Jr. took over the studio for scientific sculptures from Dr. h. c. Friedrich Ziegler. From that time onwards SOMSO produced the Ziegler models at its parent company in Sonneberg, Thuringia, Germany.

In 1952 it was taken over by the State but following the reunification in 1990, SOMSO purchased the parent company back from the State. Since 2001 the building has housed the SOMSO Museum and part of the present SOMSO production.



SOMSO parent company, Sonneberg

Professor Dr. Wilhelm His was Director of the Anatomical Institute of the University Leipzig, Germany (1872-1904) and together with Friedrich Ziegler created the world famous series of models of embryonic development.

On the occasion of the 100th Meeting of the Anatomical Society in Leipzig, Germany SOMSO introduced a special model after the original male embryo (approx. 28 days old) from the Ziegler model series No. 3. This model begins a new edition of the Ziegler human embryo models.

Hans Sommer



A view of the scientific studio of Friedrich Ziegler as shown in his catalogue from the 1930's.

Special leaflet A184, © Copyright Marcus Sommer SOMSO Models, March 2005



## SOMSO SPECIAL MODEL FROM THE WORLD FAMOUS ZIEGLER SERIES OF MODELS No. 3



Medical Simulator  
INNOVACIÓN EN EDUCACIÓN

### Medical Simulator Spain

Ctra. de Pozuelo a Majadahonda Km. 1.800  
28223 Pozuelo de Alarcón | Madrid | Spain  
T (+34) 91 382 08 88 | F (+34) 91 381 98 80

[www.medical-simulator.com](http://www.medical-simulator.com)

[info@medical-simulator.com](mailto:info@medical-simulator.com)



SOMSO  
MODELLE  
SINCE 1876

# SOMSO SPECIAL MODEL FROM THE WORLD FAMOUS ZIEGLER SERIES OF MODELS No. 3



SOMSO  
MODELLE  
SINCE 1876

Catalogue number MS 48/3-I  
Human embryo, approx. 28 days old,  
from the Ziegler series of models No. 3

The model shows the most significant structures of an embryo of about 28 days old. The left half of the body is to some extent shown in median section so that the location of the organs, characteristic of this stage of embryonic development, can be clearly identified.

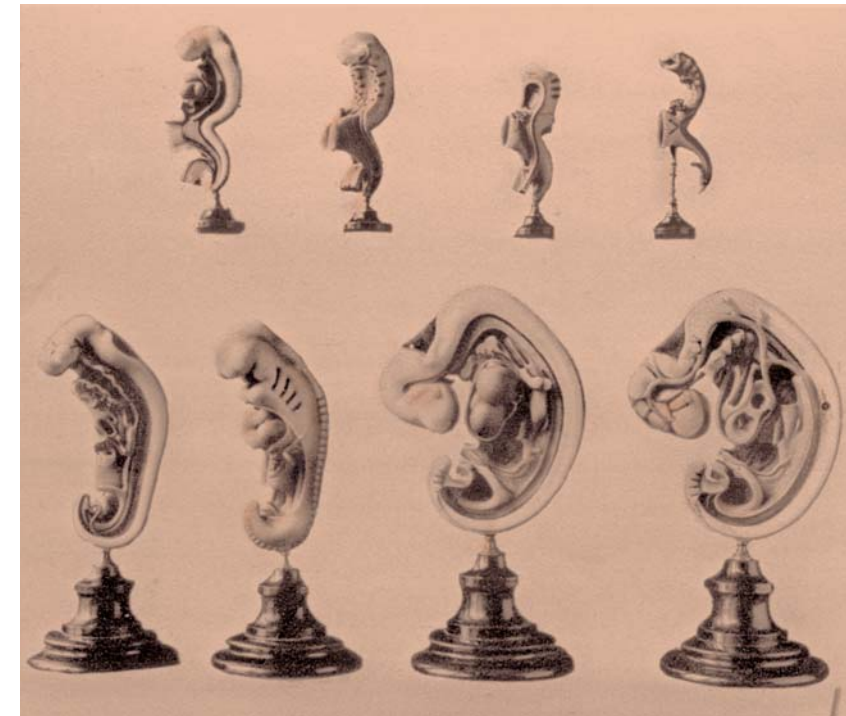
The most impressive features are:  
The early development of the heart, the heart loop in the pericardial cavity, the primary formation of the embryonic intestine tube with the pharyngeal pouches in the foregut region, the position of the liver (marked in colour), the umbilical loop, the hindgut with the allantois and the beginning of the umbilicus.

Also clearly recognisable is the early formation of the neural medullary tube with the eye position. The skin has been removed from one half of the body so that the form and location of organs is easy to identify. It is also possible to get a true picture of embryonic development in these early stages as landmarks can be clearly recognised e.g. the pharyngeal grooves (branchial grooves) with the corresponding pharyngeal pouches on the right side, the developing heart (bulbo ventricular loop) and the somites.

An extremely valuable teaching model for lessons and lectures in human embryology!



*The model is supplied  
with a protective cover.*



*The illustration shows the complete series of Ziegler models No. 3  
as they were shown in the 1930's catalogue.*