



SOMSO
MODELLE
SINCE 1876

Nature is our Model


MUSCULAR FIGURES AND TORSOS
DIGESTIVE ORGANS
ANATOMY OF SKIN AND HAIR
URINARY ORGANS




Medical Simulator
INNOVACIÓN EN EDUCACIÓN

CONTENT


ANATOMY



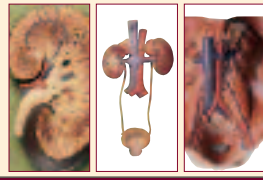
MUSCULAR FIGURES AND TORSOS
PAGE 9





DIGESTIVE ORGANS
PAGE 75



ANATOMY OF SKIN AND HAIR
PAGE 79




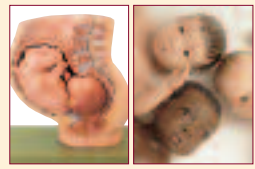
URINARY ORGANS
PAGE 83

**EYE
EAR
TEETH AND JAW
NOSE, TONGUE AND LARYNX**

www.somso.de


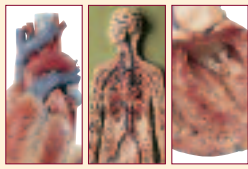
special catalogue no.
A 75/SV-III

**GENITAL ORGANS
EMBRYONIC DEVELOPMENT
ZIEGLER SERIES
BIRTH
BABY CARE**

www.somso.de



special catalogue no.
A 75/SV-V

CIRCULATORY ORGANS

www.somso.de


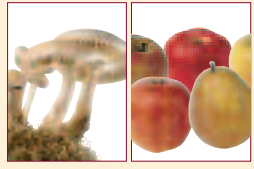
special catalogue no.
A 75/SV-IV

**HEAD
NERVOUS SYSTEM**

www.somso.de



special catalogue no.
A 75/SV-II

**FUNGI MODELS
FRUIT MODELS**

www.somso.de


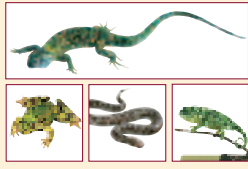
special catalogue no.
A 75/SV-VIII

FOSSIL HUMAN MODELS

www.somso.de

special catalogue no.
A 75/SV-VI

REALISTIC LIFE-SIZE ANIMAL MODELS

Nature is our Model

www.somso.de

special catalogue no.
A 75/SV-VII

You can obtain our further single catalogues as well as our complete catalogue, the anatomy catalogue and the zoology and botany catalogue on inquiry.

SOMSO - A FULL FIVE-YEAR GUARANTEE

SOMSO, recognised worldwide as a manufacturer in this field, offers a full five-year warranty - on nearly all SOMSO models - that covers both durability and workmanship, subject to correct use.





SOMSO
MODELLE
SINCE 1876



SOMSO muscular figures and torsos provide a thorough grounding in anatomy

SOMSO muscular figures and torso models can be subdivided into the following types:

Muscular figures • Torsos with interchangeable male and female genitalia

Muscular torsos • Transparent torsos

Torsos of a young man • Small torsos of a young man

Male torsos • Torso-natural casts • Female torsos

Each version fulfils special anatomical criteria which should be taken into consideration when selecting the most suitable model.

MUSCULAR FIGURES AND TORSOS

ANATOMY 1 - MUSCULAR FIGURES

A 2/07 · MALE MUSCLE FIGURE

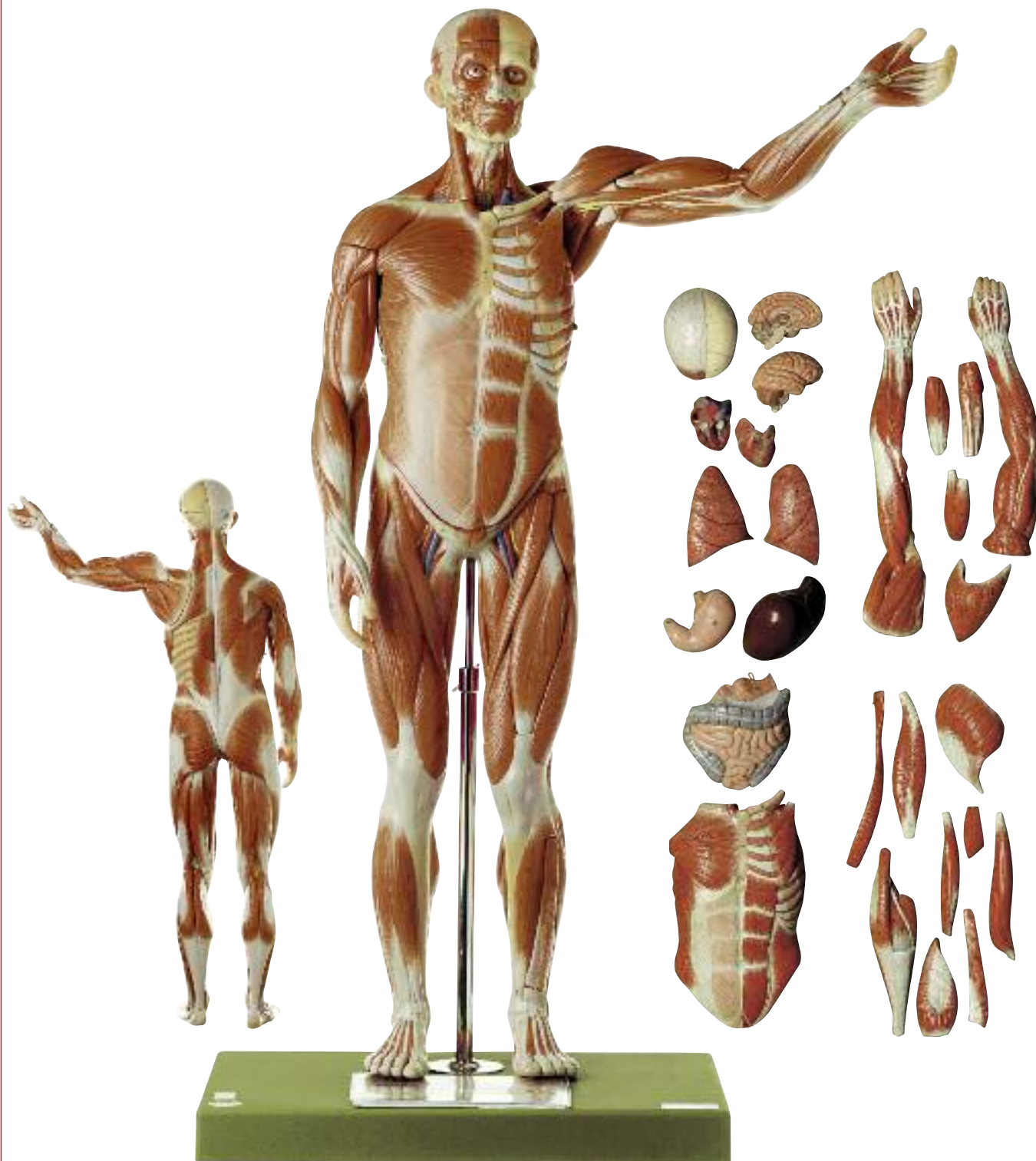
Natural size. Separates into 41 parts: body, head, vault of cranium, brain (6), thoracic and abdominal wall, lung (3), heart (2), diaphragm, liver, stomach, small and large intestine, duodenum with pancreas, ilio-cecal valve, right half of kidney, right arm, left arm (5), muscles of the left leg (9). On a stand and green base with rollers. Height: 187 cm. (figure 176 cm.), width: 84 cm., depth: 51 cm., weight: 24.2 kg.



AS 2/2 · MALE MUSCLE FIGURE

About 3/4 natural size, in SOMSO-Plast®. Separates into 36 parts: body, head, vault of cranium, brain (3), thoracic and abdominal wall, right lung (2), left lung (2), heart (2), diaphragm, liver, stomach (2), small and large intestine, duodenum with pancreas, ilio-cecal valve, right half of kidney, right arm, left arm (6), muscles of the left leg (8). On a stand and green base with rollers. Height: 140 cm. (figure 129 cm.), width: 70 cm., depth: 48 cm., weight: 19 kg.



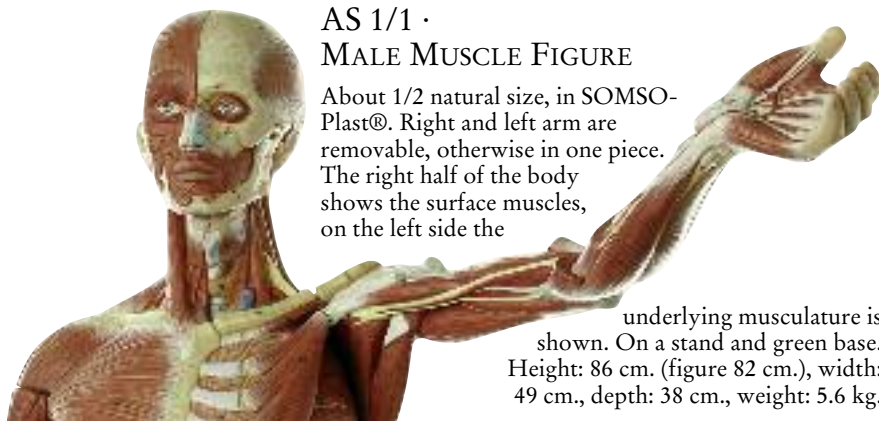


AS 1 · MALE MUSCLE FIGURE

About 1/2 natural size, in SOMSO-Plast®. Separates into 27 parts: cranium, brain (2), thoracic and abdominal wall, halves of the lung (2), heart (2), liver, stomach, duodenum, small and large intestine, right arm, left arm with four removable muscles, muscles of the leg (9), body. On a stand and green base. Height: 86 cm. (figure 82 cm.), width: 49 cm., depth: 38 cm., weight: 7.2 kg.

**AS 1/1 ·
MALE MUSCLE FIGURE**

About 1/2 natural size, in SOMSO-Plast®. Right and left arm are removable, otherwise in one piece. The right half of the body shows the surface muscles, on the left side the



underlying musculature is shown. On a stand and green base. Height: 86 cm. (figure 82 cm.), width: 49 cm., depth: 38 cm., weight: 5.6 kg.



AS 3 · MALE MUSCLE FIGURE

About 1/4 natural size, in SOMSO-Plast®. One piece model which shows the topography of muscles. On a removable green base. Height: 53 cm. (figure 50 cm.), width: 33 cm., depth: 15 cm., weight: 1.5 kg.

**AS 3 AP/NR ·
MALE MUSCLE
FIGURE WITH
COLOUR CODING
FOR THE IDENTIFICATION OF
MOTOR INNERVATION**

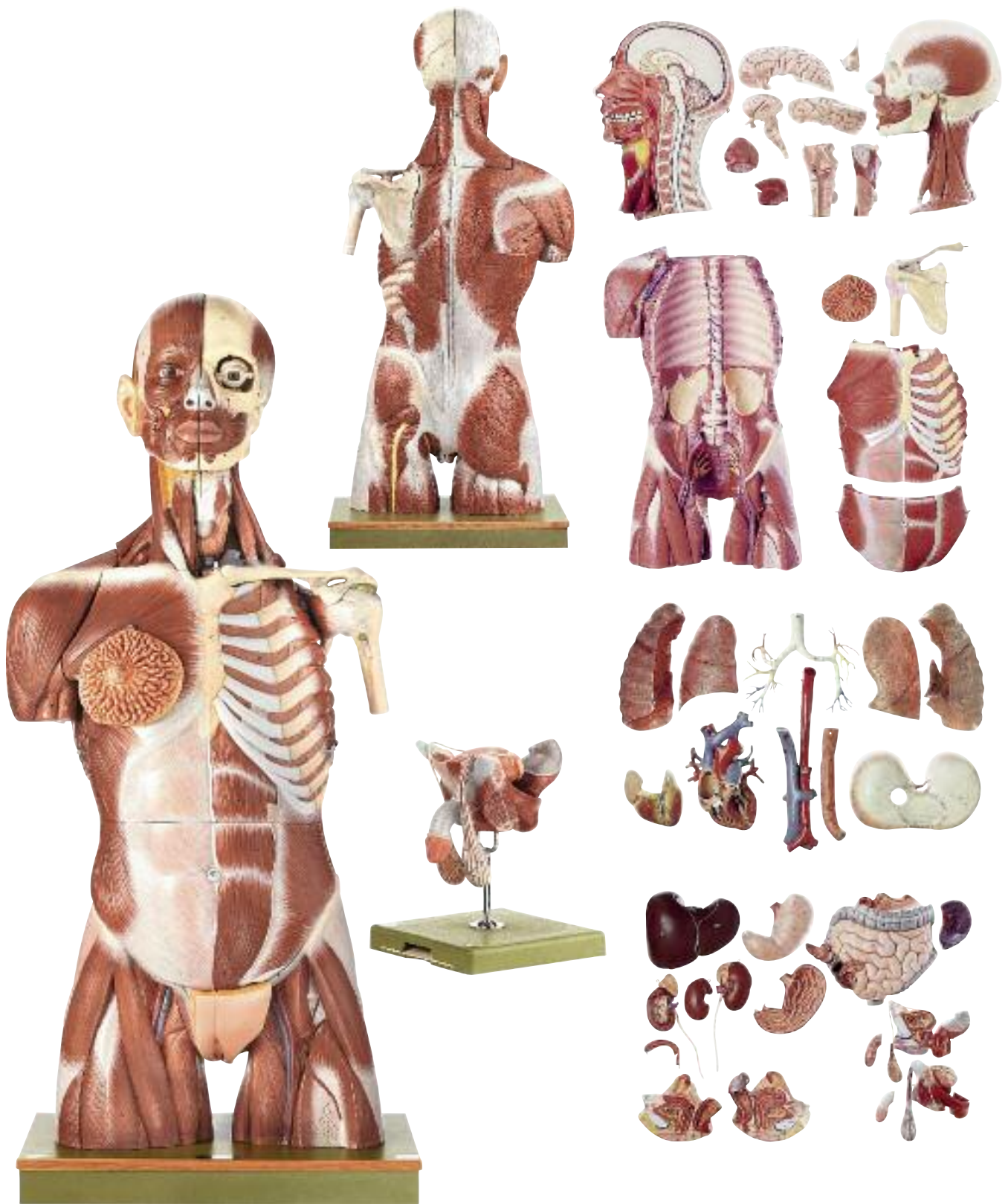
after Dr. Hans Schade. In SOMSO-Plast®, as AS 3 which shows superficial musculature but with the respective muscles and muscle groups colour coded for easy identification. One piece model. On a removable green base. Height: 53 cm. (figure 50 cm.) width: 33 cm., depth: 15 cm., weight: 1.5 kg.

**AS 3/1 ·
MUSCLE
FIGURE**

About 1/10 natural size, in SOMSO-Plast®. One piece study model showing the topography of muscles. On a green base. Height: 23 cm. (figure 21 cm.), width: 13 cm., depth: 7 cm., weight: 350 g.

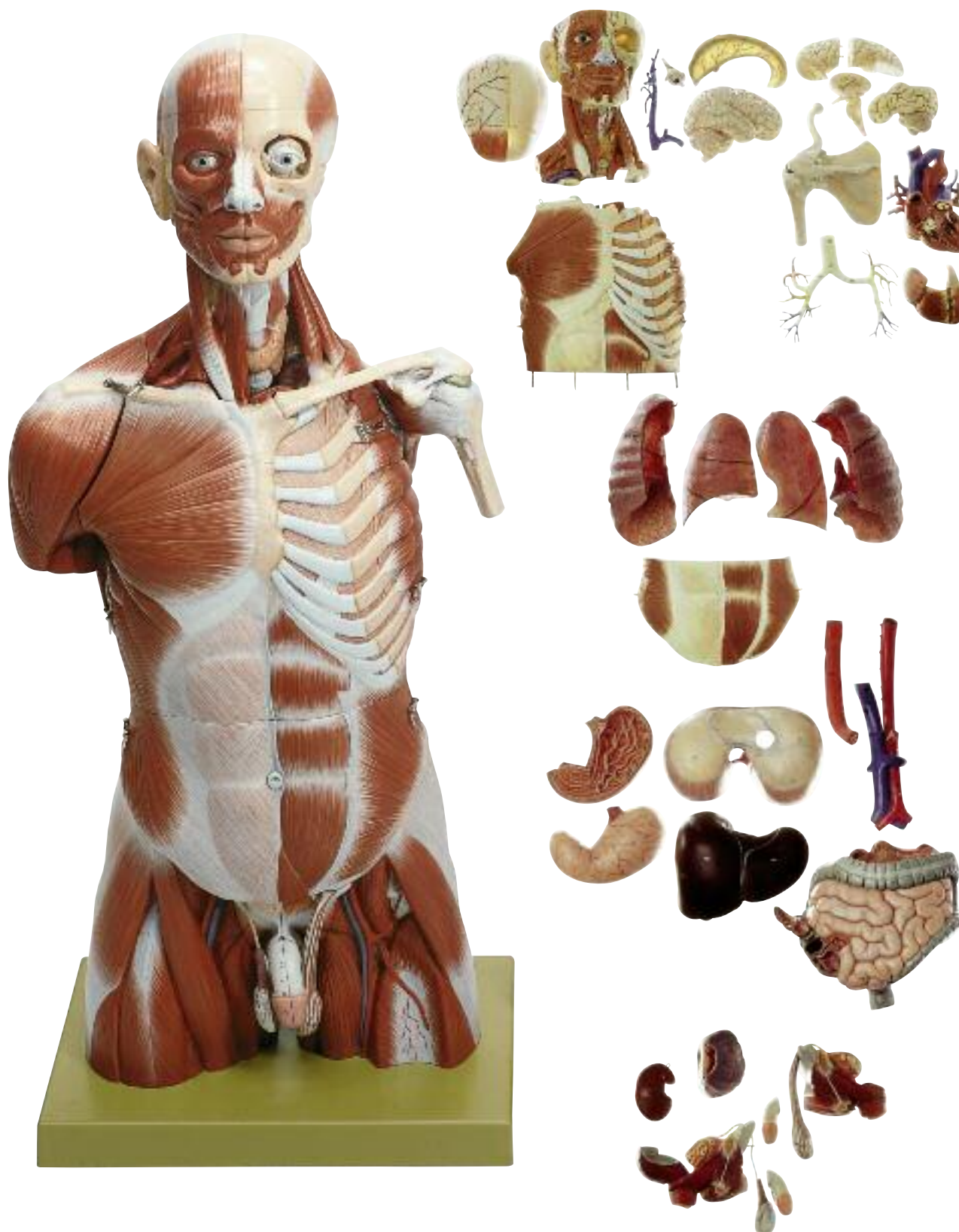


ANATOMY 1 - TORSO MODELS



AS 6 · MUSCULAR TORSO WITH INTERCHANGEABLE MALE AND FEMALE GENITALIA

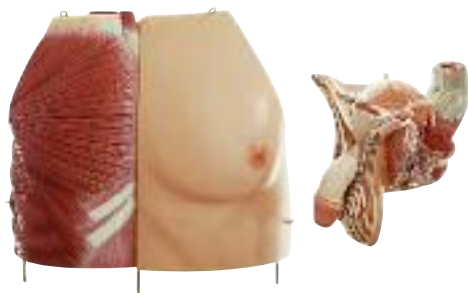
Natural size, in SOMSO-Plast®. Separates into 41 parts: 10 part head removable at the top of the costal arch, thoracic and abdominal cover (2), left shoulder joint, female mammary gland, right lung (2), left lung (2), heart (2), bronchial tree, diaphragm, oesophagus, liver, stomach (2), small and large intestine with duodenum and pancreas, opening appendix, spleen, descending aorta with inferior vena cava, right kidney and left kidney with ureter (3), female genitalia (3), male genital organs (4), torso. On a green base. Height: 90 cm. (torso 86 cm.), width: 40 cm., depth: 26 cm., weight: 15.5 kg.



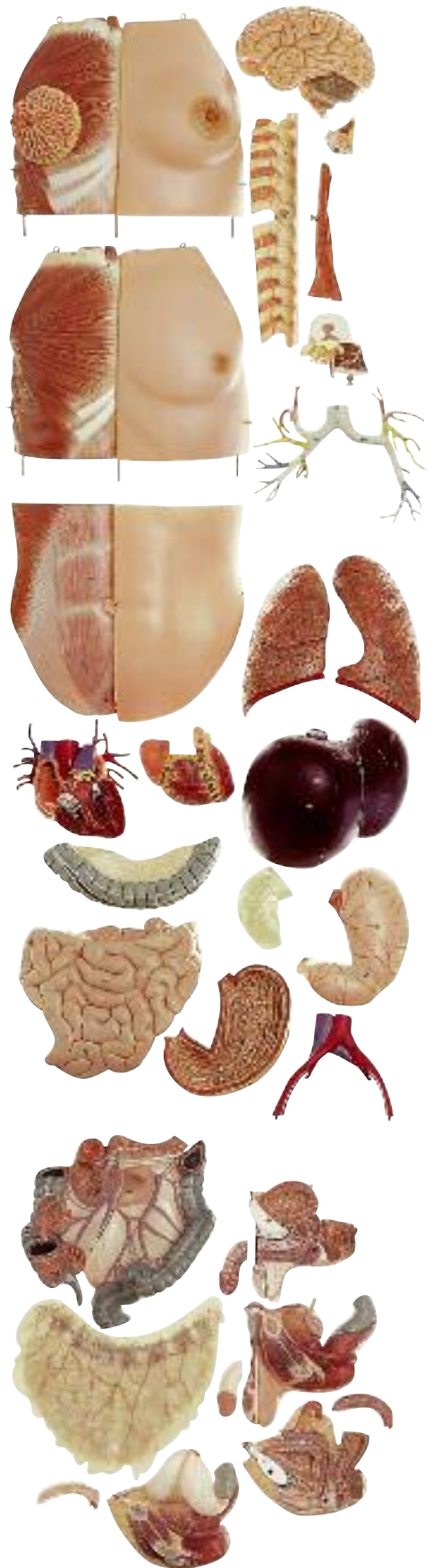
AS 17/1 · MUSCULAR TORSO WITH HEAD

Natural size, in SOMSO-Plast®. Separates into 35 parts: head (10), shoulder joint, thoracic and abdominal cover (2), lungs (4), heart (2), bronchial tree, diaphragm, oesophagus, liver, stomach (2), small and large intestine with duodenum and pancreas, opening appendix, spleen, descending aorta with inferior vena cava, half kidney, male genital organs (4), torso. On a green base. Height: 91 cm. (torso 87 cm.), width: 42 cm., depth: 29 cm., weight: 15.6 kg.

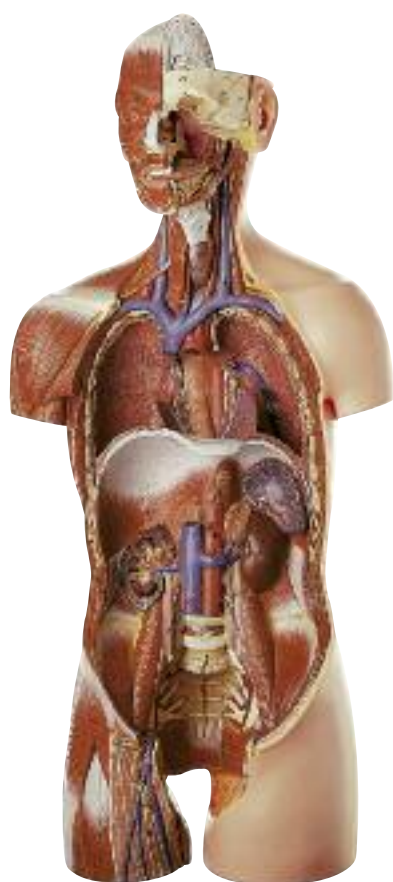
ANATOMY 1 - TORSO MODELS



AS 7 TOTAL



AS 7 VISCERA



AS 7 · MUSCULAR TORSO WITH HEAD AND OPEN BACK

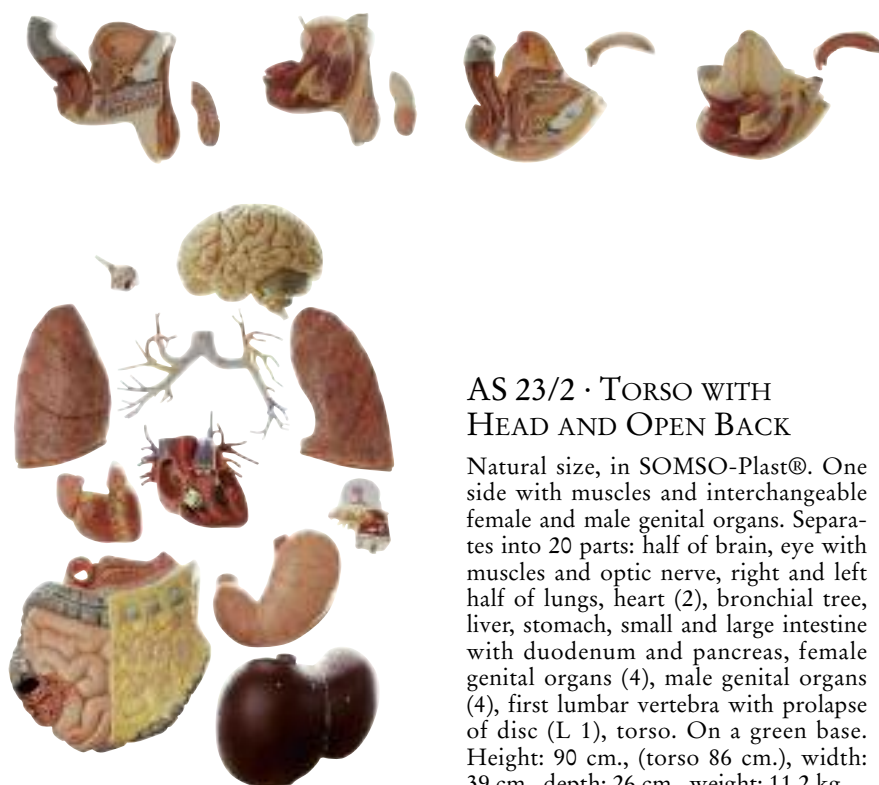
Natural size, in SOMSO-Plast®. Separates into 32 parts: left half of brain, eye with muscles and optic nerve, sternocleidomastoid muscle, female thoracic cover, male thoracic cover, abdominal cover, half of each lung (2), heart (2), bronchial tree, liver, stomach (2), transparent cover of the kidney, small and large intestine with duodenum, appendix and peritoneum, pelvic vessels, female genitalia (4), male genital organs (4), spinous process of the thoracic vertebrae and first lumbar vertebra with prolapse of disc (L 1), torso. On a green base. Height: 90 cm., (torso 86 cm.), width: 39 cm., depth: 26 cm., weight: 16 kg.

ANATOMY 1 - TORSO MODELS



AS 23/1 · MALE TORSO WITH HEAD AND OPEN BACK

Natural size, in SOMSO-Plast®. Separates into 20 parts: brain with arteries (4), eye with muscles and optic nerve, halves of the lung (2), heart (2), liver, stomach (2), small and large intestine (3), opening appendix, omentum, half of right kidney, half of bladder, torso. On a green base. Height: 90 cm., (torso 86 cm.), width: 39 cm., depth: 26 cm., weight: 11.1 kg.



AS 23/2 · TORSO WITH HEAD AND OPEN BACK

Natural size, in SOMSO-Plast®. One side with muscles and interchangeable female and male genital organs. Separates into 20 parts: half of brain, eye with muscles and optic nerve, right and left half of lungs, heart (2), bronchial tree, liver, stomach, small and large intestine with duodenum and pancreas, female genital organs (4), male genital organs (4), first lumbar vertebra with prolapse of disc (L 1), torso. On a green base. Height: 90 cm., (torso 86 cm.), width: 39 cm., depth: 26 cm., weight: 11.2 kg.

ANATOMY 1 - TORSO MODELS



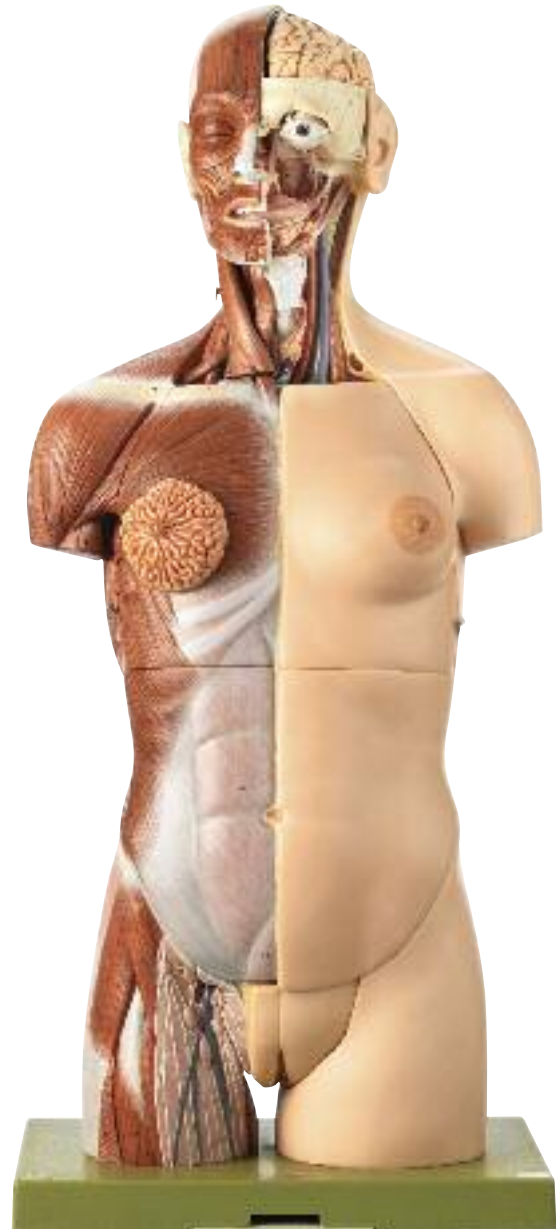
AS 52 · INTERCHANGEABLE FEMALE GENITAL ORGANS WITH A 10-WEEK-OLD FETUS

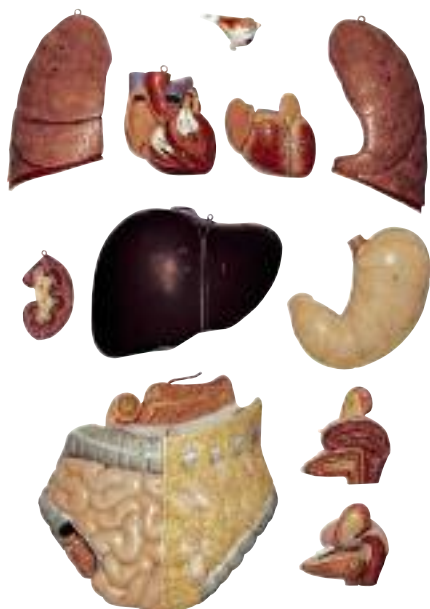
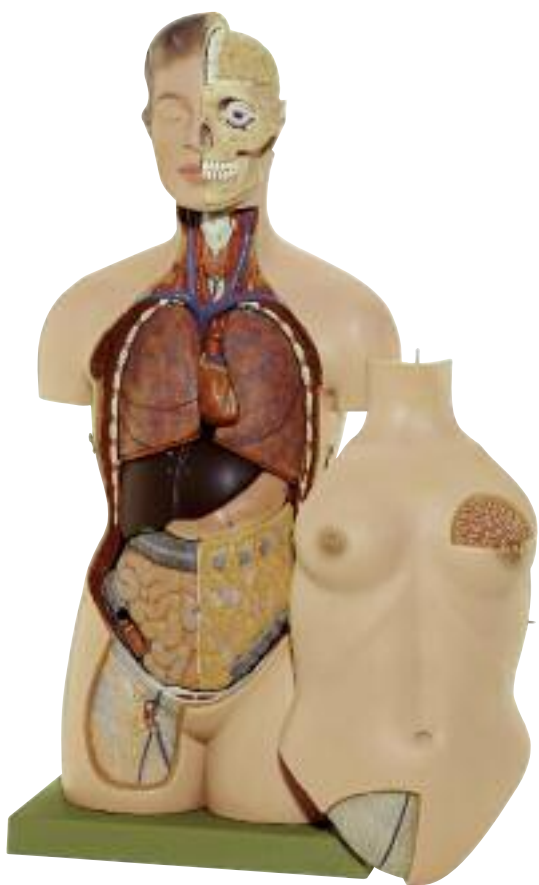
suitable for AS 50/1, natural size, in SOMSO-Plast®. Separates into 2 parts. On a green base. Height: 28 cm., width: 18 cm., depth: 18 cm., weight: 900 g.



AS 50/1 · FEMALE TORSO WITH HEAD

Natural size, in SOMSO-Plast®. On one side representation of the muscles and opened back. Separates into 27 parts: half of the brain, eye with muscles and optic nerve, right sternocleidomastoid muscle, thoracic and abdominal cover (2), right and left half of the lungs, heart (2), bronchial tree, liver, stomach (2), peritoneum, small and large intestine with duodenum (3), opening appendix, transparent cover of kidney, pelvic vessels, female genital organs (4), spinous processes of the thoracic vertebrae, first lumbar vertebra with prolapse of disc (L 1), torso. On a green base. Height: 90 cm. (torso 87 cm.), width: 39 cm., depth: 26 cm., weight: 13.4 kg.





AS 40 · FEMALE TORSO WITH HEAD

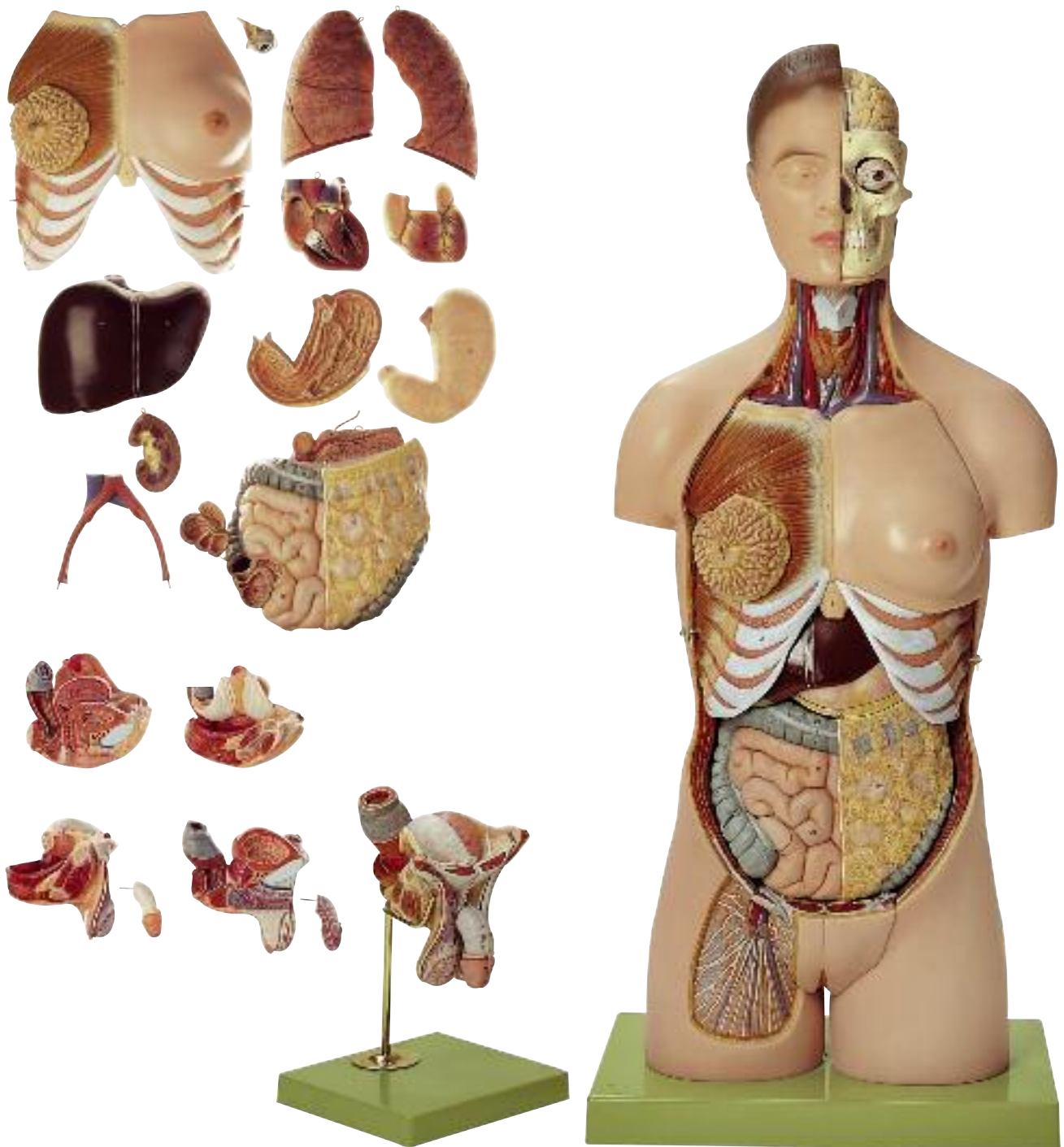
Natural size, in SOMSO-Plast®. The thoracic and abdominal wall can be removed. Separates into 13 parts: eye, halves of the lungs (2), heart (2), liver, stomach, duodenum with small and large intestine, half of the kidney, internal genital organs with urinary bladder (2), torso. On a green base. Height: 90 cm. (torso 86 cm.), width: 41 cm., depth: 26 cm., weight: 12 kg.



AS 44 · FEMALE TORSO WITHOUT HEAD

Natural size, in SOMSO-Plast®. As AS 40, but without head and thoracic and abdominal wall. Separates into 11 parts. On a green base. Height: 70 cm. (torso 66 cm.), width: 41 cm., depth: 26 cm., weight: 8.4 kg.

ANATOMY 1 - TORSO MODELS

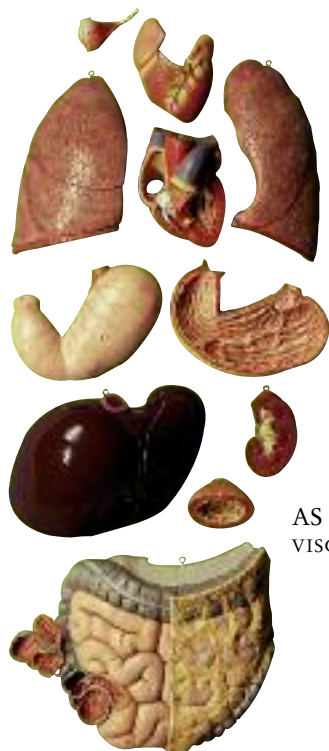


AS 4 · TORSO WITH HEAD AND INTERCHANGEABLE MALE AND FEMALE GENITALIA

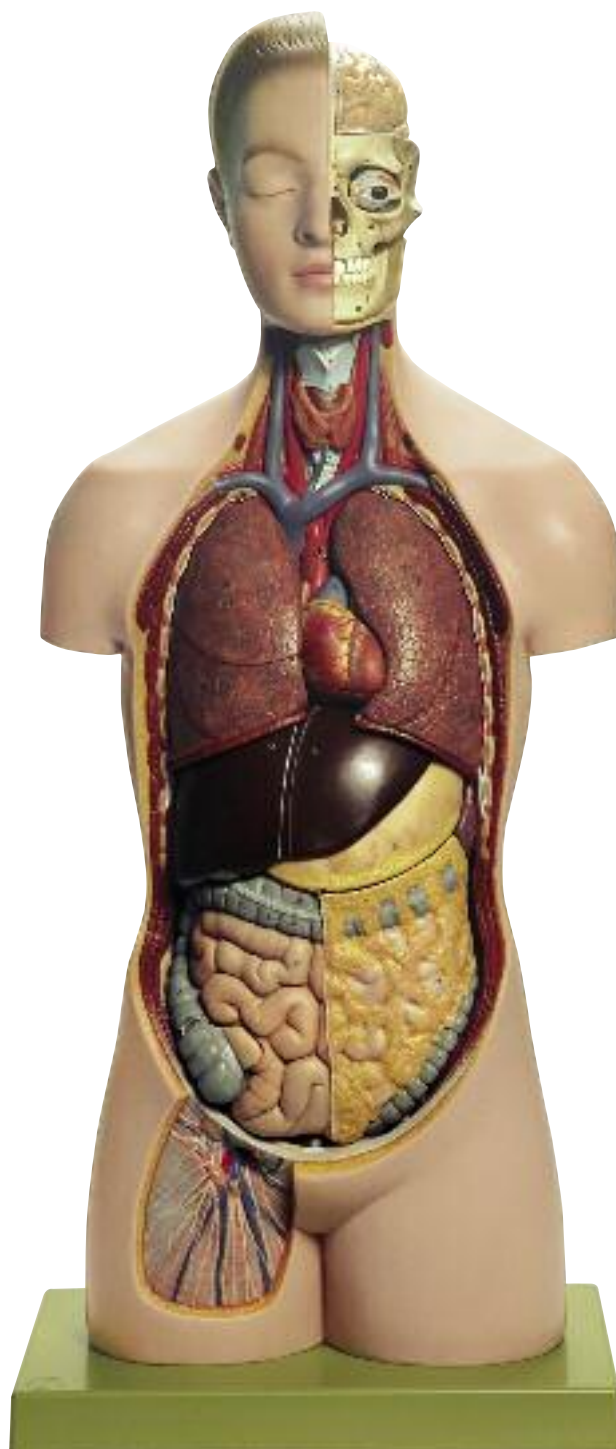
Natural size, in SOMSO-Plast®. Separates into 20 parts: eye with optic nerve and muscles, female thoracic wall, halves of the lung (2), heart (2), liver, stomach (2), small and large intestine with duodenum and pancreas, opening appendix, right kidney, pelvic vessels, female (2) and male (4) reproductive organs, torso. On a green base. Height: 92 cm. (torso 88 cm.), width: 40 cm., depth: 26 cm., weight: 12.2 kg.

AS 4/1 · TORSO WITH HEAD AND INTERCHANGEABLE MALE AND FEMALE GENITALIA (NOT ILL.)

Natural size, in SOMSO-Plast®. As AS 4 but separates into 16 parts: eye, female thoracic wall, halves of the lung (2), heart (2), liver, stomach, small and large intestine, female (2) and male (4) reproductive organs, torso. On a green base. Height: 92 cm. (torso 88 cm.), width: 40 cm., depth: 26 cm., weight: 12 kg.



AS 16/1
VISCERA



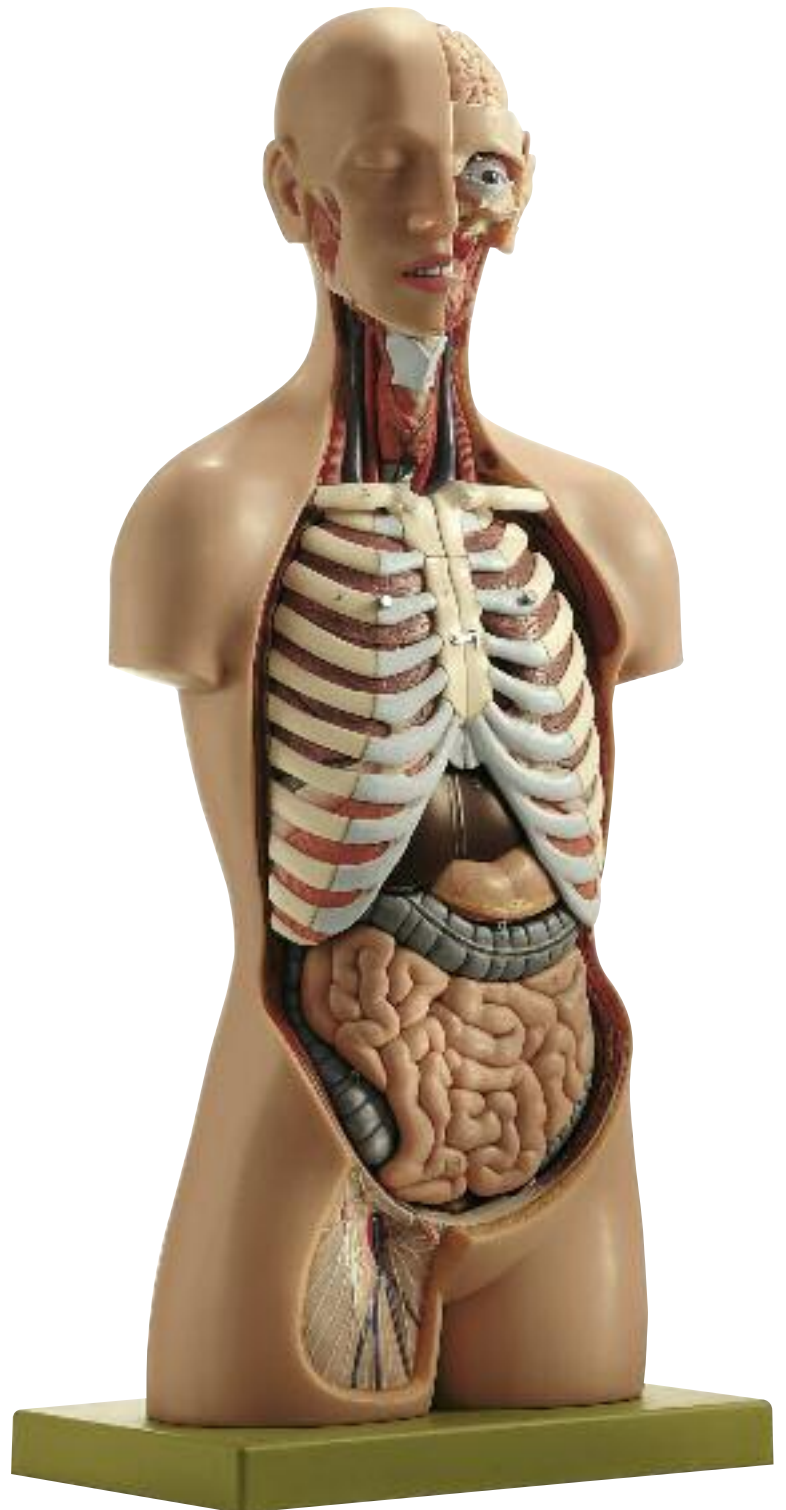
AS 16/1 · TORSO OF YOUNG MAN WITH HEAD

Natural size, in SOMSO-Plast®. Separates into 13 parts: eye with muscles and optic nerve, half of each lung (2), heart (2), liver, stomach (2), half of right kidney, small and large intestine, opening appendix, part of bladder, torso. On a green base. Height: 91 cm. (torso 87 cm.), width: 39 cm., depth: 26 cm., weight: 9.1 kg.

AS 16 · TORSO OF YOUNG MAN WITH HEAD (NOT ILL.)

Natural size, in SOMSO-Plast®. As AS 16/1 but the stomach is in one piece. Separates into 12 parts. On a green base. Height: 91 cm. (torso 87 cm.), width: 39 cm., depth: 26 cm., weight: 9 kg.

ANATOMY 1 - TORSO MODELS



SOMSO torso model AS 21 - a valuable, tried and tested, aid to first-aid instruction.

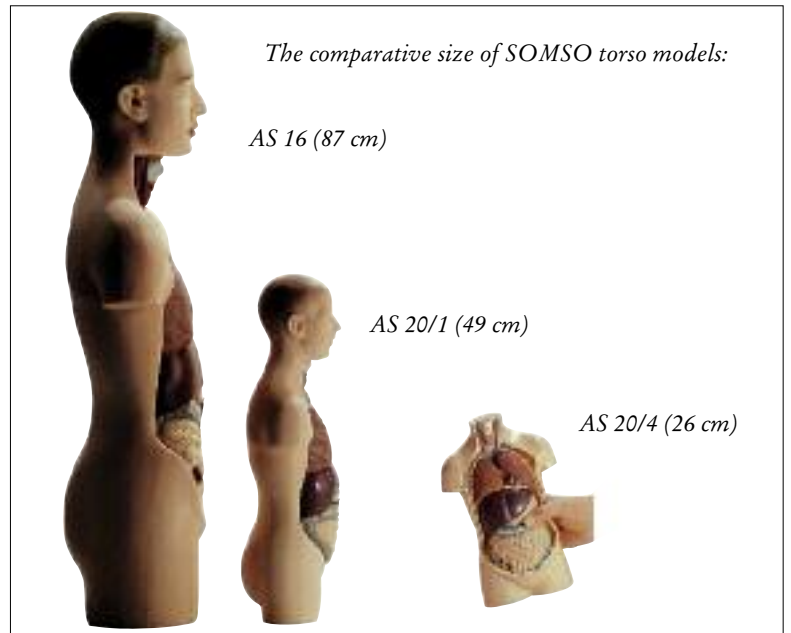
AS 21 · MALE TORSO WITH HEAD

Natural size, in SOMSO-Plast®. Separates into 15 parts: left half of brain, eye with muscles and optic nerve, halves of the lung (2), heart (2), liver, stomach, small and large intestine (3), opening appendix, half of right kidney, half of bladder, torso. On a green base. Height: 89 cm. (torso 85 cm.), width: 39 cm., depth: 26 cm., weight: 10.7 kg.



AS 12 · TORSO OF YOUNG MAN WITHOUT HEAD

Natural size, in SOMSO-Plast®. Separates into 12 parts: half of each lung (2), heart (2), liver, stomach, duodenum with pancreas, small and large intestine, opening appendix, bladder, half kidney, torso. On a green base. Height: 71 cm. (torso 67 cm.), width: 39 cm., depth: 26 cm., weight: 8.7 kg.



AS 15/E · TORSO OF YOUNG MAN WITH HEAD

Natural size, in SOMSO-Plast®. Separates into 8 parts: half of each lung (2), heart (2), liver, stomach, small and large intestine, torso. On a green base. Height: 91 cm. (torso 87 cm.), width: 39 cm., depth: 26 cm., weight: 8.8 kg.



AS 11/E · TORSO OF YOUNG MAN WITHOUT HEAD

Natural size, in SOMSO-Plast®. Separates into 8 parts: half of each lung (2), heart (2), liver, stomach, small and large intestine, torso. On a green base. Height: 73 cm. (torso 69 cm.), width: 39 cm., depth: 26., weight: 8.2 kg.

ANATOMY 1 - TORSO MODELS



»Nature is our Model« Special Exhibition:
Medical-Biological Models in plastic,
Deutsches Museum, Munich.
20 April to 15 October 1999

AS 20/1 · SMALL TORSO OF YOUNG MAN WITH HEAD

About 1/2 natural size, in SOMSO-Plast®. Separates into 11 parts: left half of head, half brain, half of each lung (2), heart (2), liver, stomach, small and large intestine, half right kidney, torso. On a green base. Height: 52 cm. (torso 49 cm.), width: 21 cm., depth: 18 cm., weight: 3.15 kg.

AS 20 · SMALL TORSO OF YOUNG MAN WITHOUT HEAD (NOT ILL.)

As AS 20/1, but without head, separates into 8 parts. On a green base. Height: 42 cm. (torso 39 cm.), width: 21 cm., depth: 18 cm., weight: 2.2 kg.



AS 20/5 · SMALL TORSO OF YOUNG MAN WITH HEAD

About 1/3 natural size, in SOMSO-Plast®. Separates into 9 parts: median section of the head (2), right and left lung, heart, liver, stomach, small and large intestine, torso. Removable from green base. Height: 37 cm. (torso 35 cm.), width: 17.5 cm., depth: 14 cm., weight: 2 kg.

AS 20/4 · SMALL TORSO OF YOUNG MAN WITHOUT HEAD (NOT ILL.)

As AS 20/5, but without head, separates into 7 parts. On a removable green base. Height: 28 cm. (torso 26 cm.), width: 17.5 cm., depth: 14 cm., weight: 1.7 kg.



AS 20/4 B · SMALL TORSO OF YOUNG MAN WITHOUT HEAD

As AS 20/4, but black in colour.

AS 20/5 B · SMALL TORSO OF YOUNG MAN WITH HEAD

As AS 20/5, but black in colour.



AS 9 · TRANSPARENT TORSO MODEL WITHOUT HEAD

Natural size, made of special plastic. The transparent model shows the skeletal system together with the topography of the intestines. In one piece. On a green base. Height: 90 cm. (torso 83 cm.), width: 44 cm., depth: 38 cm., weight: 14.6 kg.



AS 9/2 · TRANSPARENT TORSO MODEL WITH HEAD

Natural size, made of special plastic. The transparent model shows the skeletal system in conjunction with the topography of the intestines. The cranial bones are not shown in order to expose the brain and the blood vessels supplying it. In one piece. On a green base. Height: 104 cm. (torso 103 cm.), width: 36 cm., depth: 29.5 cm., weight: 15.6 kg.



AS 9/3 · TRANSPARENT TORSO MODEL WITH BLOOD VESSELS AND HEAD

Natural size, made of special plastic. The transparent model shows the skeletal system in conjunction with the most important blood vessels and nerves. In one piece. On a green base. Height: 104 cm. (torso 103 cm.), width: 36 cm., depth: 29.5 cm., weight: 10.9 kg.



AS 9/1 · TRANSPARENT MUSCLE TORSO MODEL WITH HEAD

Natural size, made of special plastic. The transparent model shows the skeletal system on the left side of the body and the superficial layers of muscles on the right. The relief-type median section enables demonstration of the relative position of the intestines. In one piece. On a green base. Height: 104 cm. (torso 103 cm.), width: 36 cm., depth: 29.5 cm., weight: 11.1 kg.

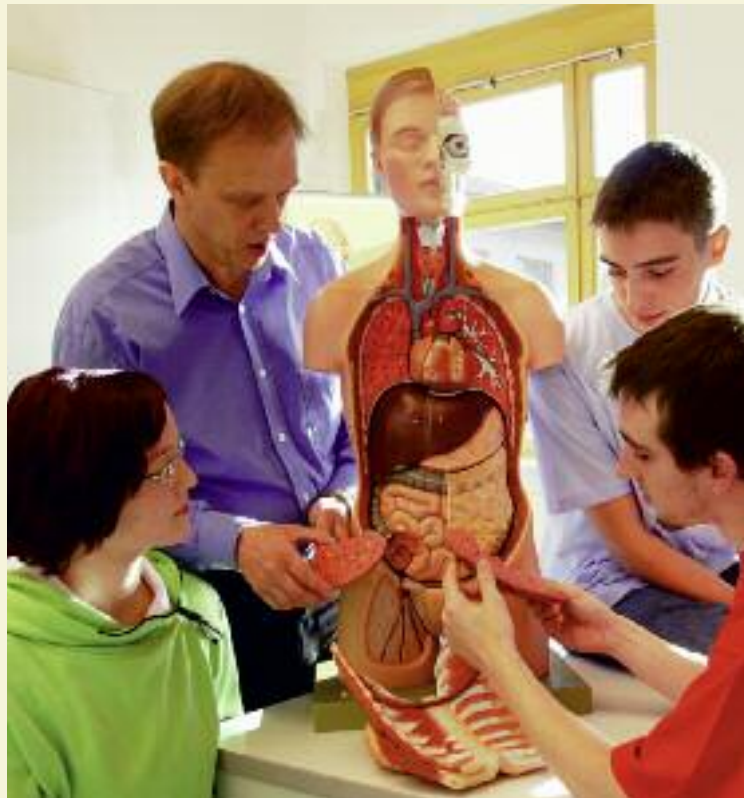


A resilient plastic material for the range - SOMSO-Plast®



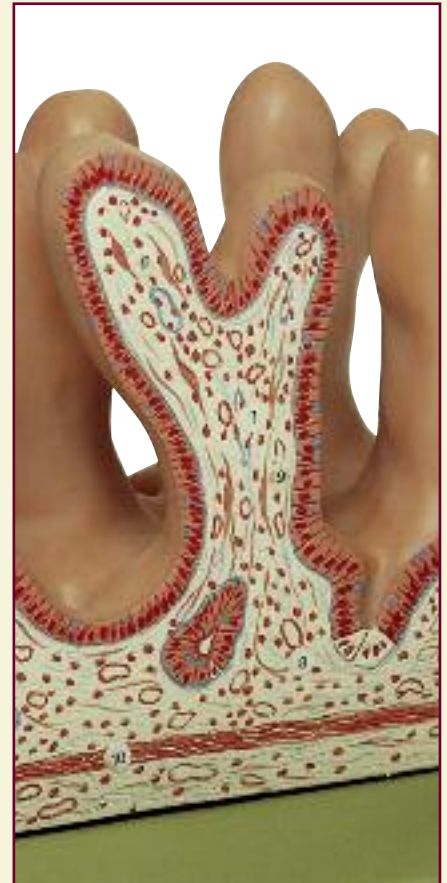
Years of technological advancements have seen the change from papier-maché to resilient plastic SOMSO-Plast®. Models for classrooms must have high mechanical strength in addition to aesthetic appearance and, here too, SOMSO succeeds in fulfilling these criteria.

SOMSO knows what is required of classroom models. Plastics and paints, which can withstand repeated separation and reassembly, are formulated to meet these requirements. The fact that many models are still in use after many years proves this.





SOMSO
MODELLE
SINCE 1876



*Thanks to SOMSO models,
histology becomes visible*

DIGESTIVE ORGANS



JS 2/1 · DIGESTIVE TRACT

Natural size, relief model, in SOMSO-Plast®. Showing the alimentary canal from the mouth to the rectum. Shown in median section are the buccal cavity and pharynx, the oesophagus with half the stomach, the opened duodenum, the small and large intestine, the opened appendix and the unfolded rectum. The transverse colon can be removed. Liver and pancreas are shown. Separates into 2 parts. Mounted on a green board. Height: 91 cm., width: 32 cm., depth: 12 cm., weight: 4.7 kg.

JS 2/2 · DIGESTIVE TRACT (NOT ILL.)

Natural size, relief model, in SOMSO-Plast®. As JS 2/1, but the half section of the stomach can be opened. Separates into 3 parts. Mounted on a green board. Height: 91 cm., width: 32 cm., depth: 12 cm., weight: 5 kg.



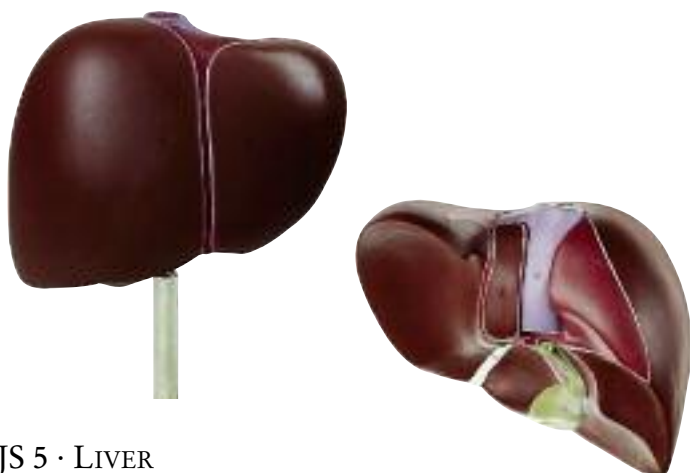
JS 4 · STOMACH

Natural size, in SOMSO-Plast®. Showing the longitudinal and circular muscle layers. Opens to show the cardia and pylorus, the relief of the mucous membrane and the gastric canal as well as the stomach wall in section. Network of arteries and nerves and the position of the peritoneum are shown. Separates into 2 parts. On a stand with green base. Height: 34 cm., width: 19 cm., depth: 18 cm., weight: 800 g.



JS 6 · STOMACH WALL

Enlarged many times. In SOMSO-Plast®. The formation and structure of layers are shown by a transverse and vertical section. In one piece. Mounted on a green board. Height: 16 cm., width: 25.5 cm., depth: 32 cm., weight: 1.8 kg.



JS 5 · LIVER

Natural size, in SOMSO-Plast®. Showing the four lobes of the liver, the peritoneum, the gall bladder and vessels. In one piece. On a stand with green base. Height: 27 cm., width: 19 cm., depth: 18 cm., weight: 700 g.



JS 7 · APPENDIX AND CAECUM

Natural size. In SOMSO-Plast®. The wall of the caecum can be opened. Separates into 2 parts. On a stand with green base. Height: 20 cm., width: 12 cm., depth: 12 cm., weight: 400 g.



JS 8 · LIVER AND GALL BLADDER

Enlarged approx. 1 1/2 times, in SOMSO-Plast®. Open from the side facing the intestines to show the branches of the vessels in the liver and the bile duct system. In one piece. On a stand with green base. Height: 29 cm., width: 26 cm., depth: 19 cm., weight: 900 g.



J 8/2 · MODEL OF THE SURGICAL DIVISION OF THE LIVER INTO SEGMENTS

After PD Dr. F. Köckerling. Natural size. Showing the segments of the liver, the portal vein branches and the hepatic veins as well as the segmental boundaries on the parenchymal surface. Separates into 2 parts. On a stand with green base. Height: 37 cm., width: 24 cm., depth: 18.5 cm., weight: 1.1 kg.



JS 8/1 · VASCULAR ARCHITECTURE OF THE LIVER

Natural size, in SOMSO-Plast®. The model shows the liver from the front. The liver segments are indicated. The removable front part of the model makes the vascular architecture of the liver visible. Separates into 2 parts. On a stand with green base. Height: 27 cm., width: 19 cm., depth: 18 cm., weight: 800 g.



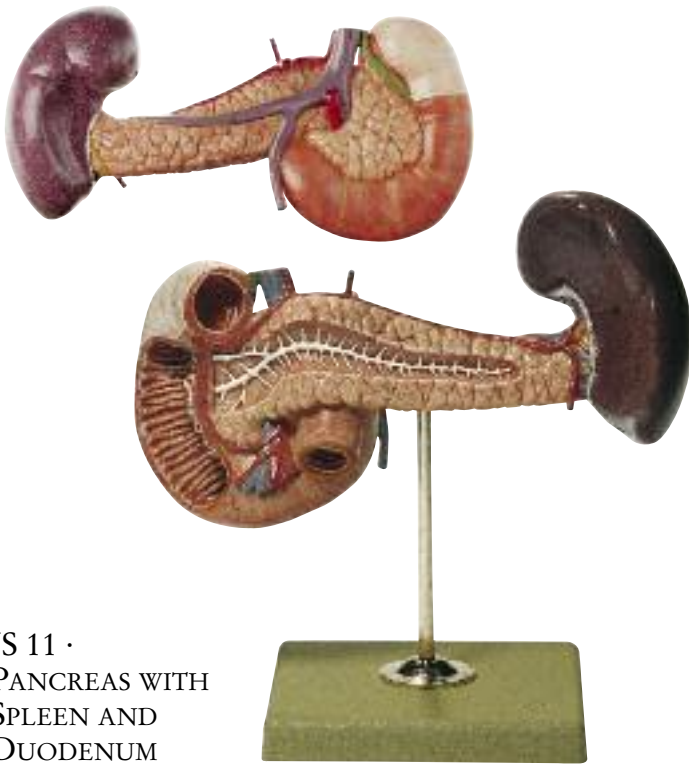
J 8/3 · MODEL OF THE PORTAL VEIN

After PD Dr. F. Köckerling. Natural size. The model shows the normal vascular pattern of the portal vein. In one piece. On a stand with green base. Height: 35.5 cm., width: 21 cm., depth: 20 cm., weight: 700 g.



J 8/4 · MODEL OF THE HEPATIC VEINS

After PD Dr. F. Köckerling. Natural size. The model shows the normal anatomy of the hepatic veins. In one piece. On a stand with green base. Height: 34 cm., width: 22 cm., depth: 25 cm., weight: 700 g.



JS 11 ·
PANCREAS WITH
SPLEEN AND
DUODENUM

Natural size, in SOMSO-Plast®. On the pancreas, the pancreatic duct is shown up to its aperture; the duodenum is partly open. In one piece. On a stand with green base. Height: 23 cm., width: 22 cm., depth: 12 cm., weight: 300 g.



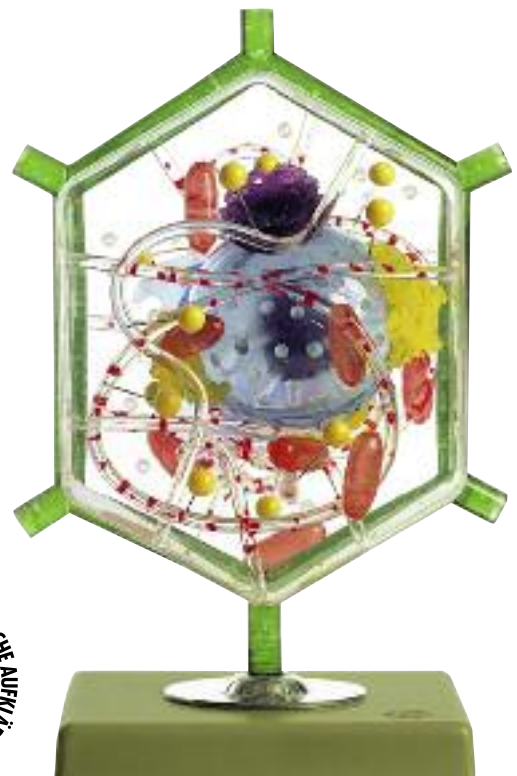
JS 14 ·
INTERNAL SURFACE OF THE JEJUNUM

Enlarged approx. 400 times, in SOMSO-Plast®. After Prof. Dr. E. Wuestenfeld, model made by E. Rack. The finger-like protrusions represent villi, the cavities - crypts. A surface section shows the histological formation of a villus (histological colouring). In one piece. On a stand with green base. Height: 17 cm., width: 18 cm., depth: 18 cm., weight: 600 g.



JS 15 · MODEL OF A LIVER CELL

Enlarged many times, in special transparent plastic. After an original from the Bundeszentrale fuer gesundheitliche Aufklaerung at Cologne, Rhine. In one piece. On a stand with green base. Height: 24 cm., width: 14 cm., depth: 12 cm., weight: 400 g.





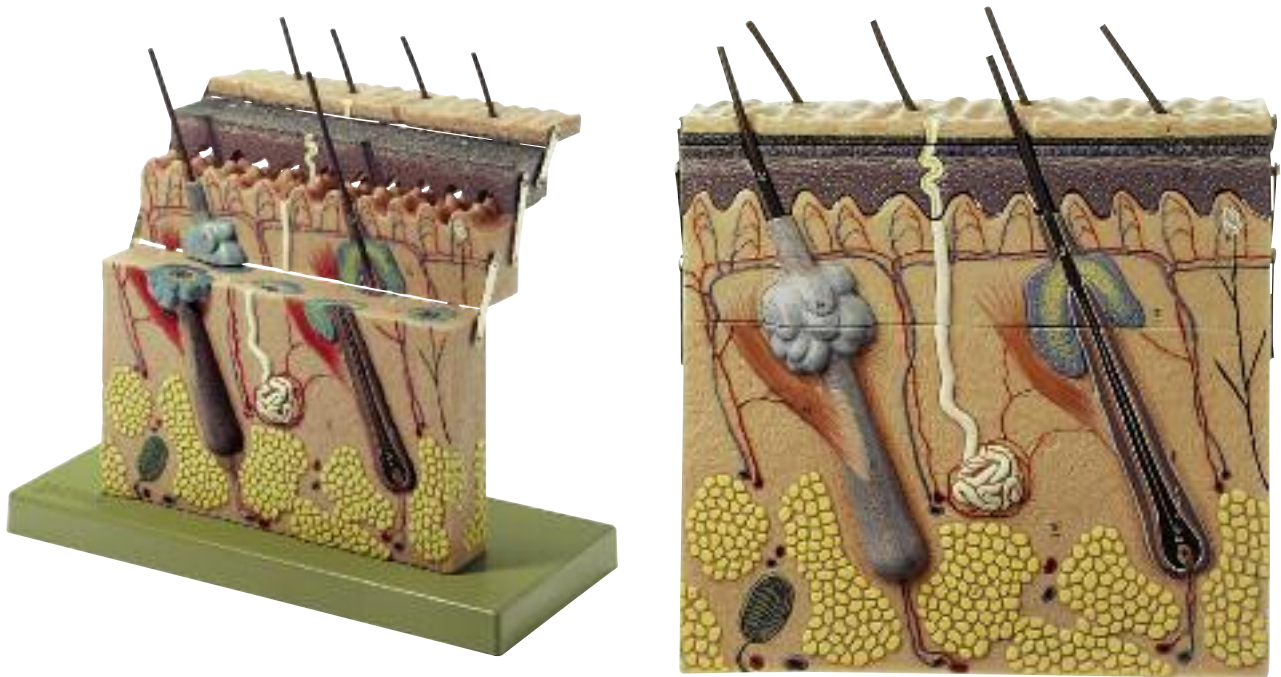
SOMSO
MODELLE
SINCE 1876



*The skin - our largest organ -
easy to understand in both section and layers
thanks to SOMSO models*

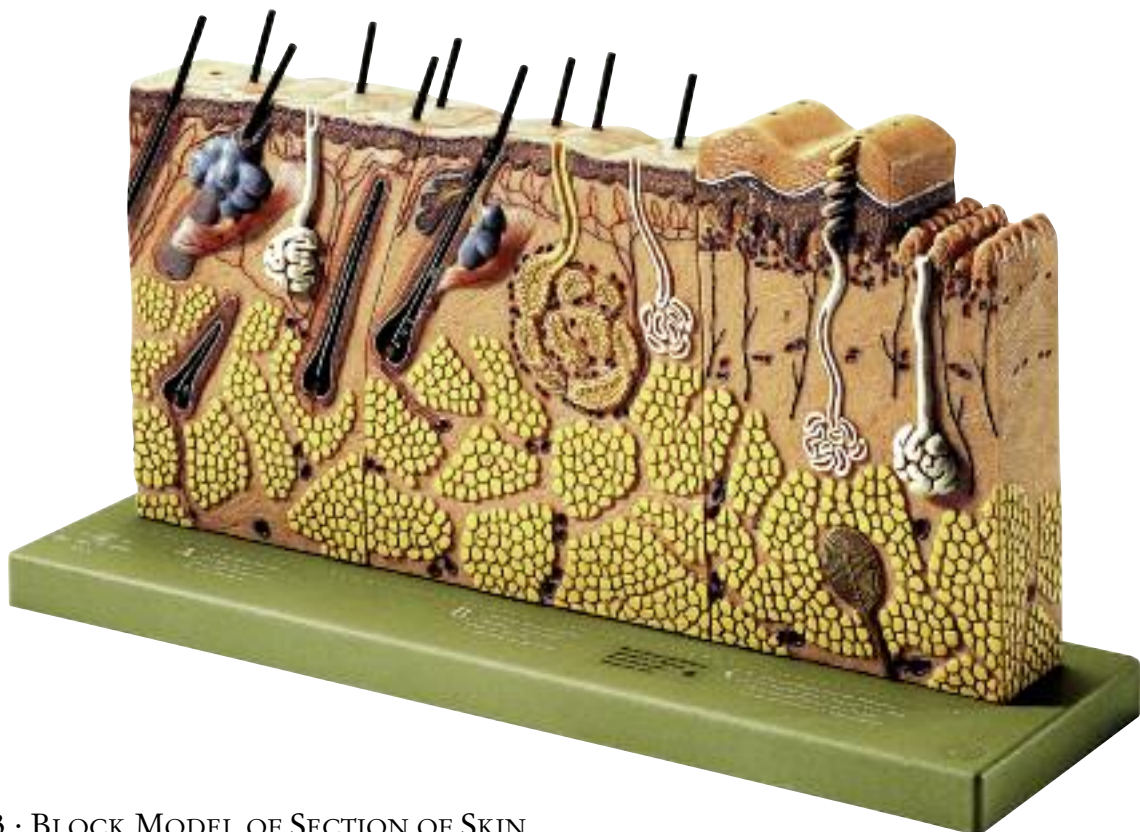
ANATOMY OF SKIN AND HAIR

ANATOMY 11 - ANATOMY OF SKIN AND HAIR



KS 1 · SECTION OF SKIN

Enlarged approx. 70 times, in SOMSO-Plast®. The layers of skin can be removed showing the first rudiments of hair (exposed and in section), sweat gland and sense organs of the skin. Separates into 4 parts. On a green base. Height: 27 cm., width: 33 cm., depth: 15 cm., weight: 1.8 kg.



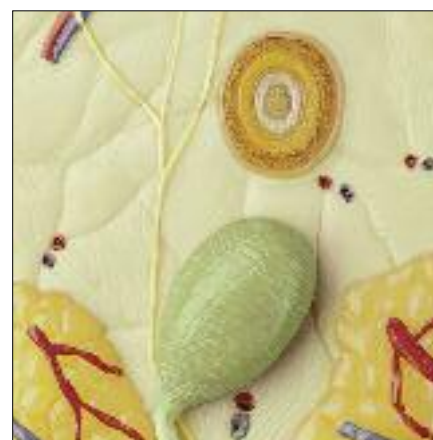
KS 3 · BLOCK MODEL OF SECTION OF SKIN

Enlarged approx. 70 times, in SOMSO-Plast®. Model shows: a) scalp with hair, b) axilla, c) the hairless skin of the sole of the foot. In one piece. On a green base. Height: 25 cm., width: 47 cm., depth: 15 cm., weight: 2.2 kg.



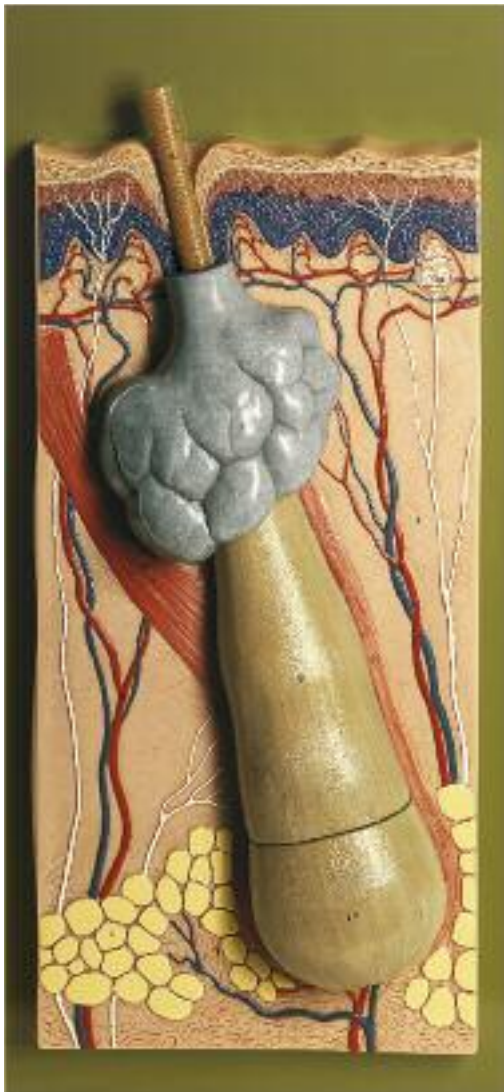
KS 2 · SECTION OF SKIN

Enlarged approx. 70 times, in SOMSO-Plast®. Relief model with two hair follicles (fully exposed and in section). In one piece. Mounted on a green board. Height: 25 cm., width: 35 cm., depth: 5 cm., weight: 1.1 kg.



KS 4 · BLOCK MODEL OF THE SKIN

Enlarged approx. 70 times, in SOMSO-Plast®. Model shows the scalp, with hair in different planes of section. In one piece. On a green base. Height: 21 cm., width: 20 cm., depth: 11 cm., weight: 1.3 kg.



KS 7 · MODEL OF A HAIR

Enlarged many times, in SOMSO-Plast®. The microscopic formation of hair is shown in relation to the skin and the appending organs. The stratified structure of the hair is clearly shown. Separates into 6 parts: sebaceous gland, hair cuticle and cuticle of the sheath (3), hair-bulb, skin relief. On a green base. Height: 65 cm., width: 30 cm., depth: 12 cm., weight: 4.5 kg.



KS 6 · FINGERNAIL

Enlarged approx. 10 times, in SOMSO-Plast®. Model of the last finger joint. The wall of the nail and half of the body of the nail are removable. Separates into 3 parts. On a green base. Height: 26 cm., width: 18 cm., depth: 18 cm., weight: 1.4 kg.

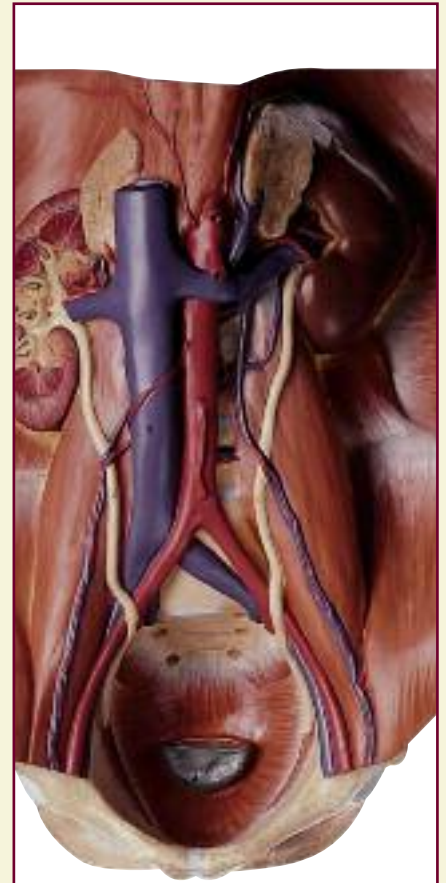
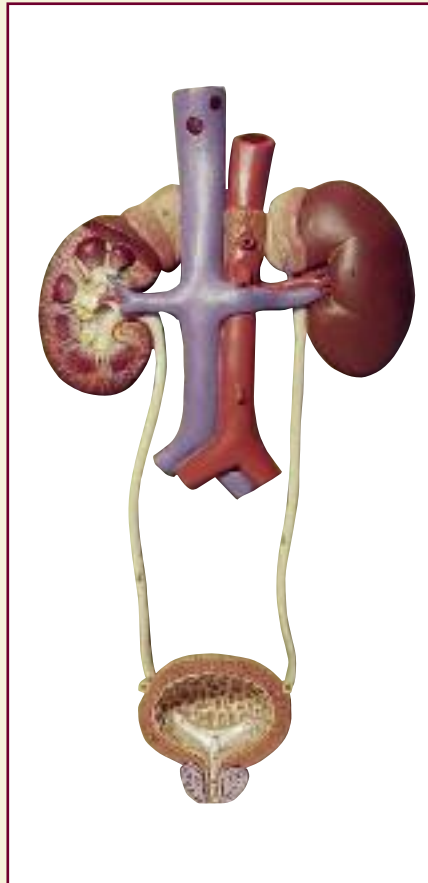
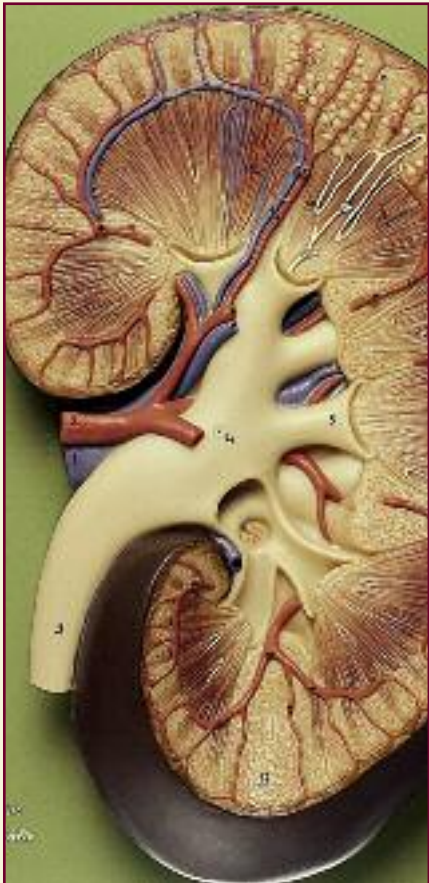


KS 13 · MODEL OF A HUMAN HAIR

Enlarged 4000 times, in special transparent plastic. The anatomical delicate formation of the hair is shown in medial and horizontal section. After electron microscope pictures. One complete cortical cell and cuticle cell can be removed. Separates into 3 parts. On a green base. Height: 46 cm., width: 33 cm., depth: 26 cm., weight: 2.7 kg.



SOMSO
MODELLE
SINCE 1876



Microscopic structure of the urinary organs – visible through SOMSO models

URINARY ORGANS

ANATOMY 12 - URINARY ORGANS



LS 4 · RIGHT KIDNEY

Enlarged approx. 3 times, in SOMSO-Plast®. Frontal section seen from behind; pyramids of the kidney with their papillae entering the partly open pelvis. Schematic presentation of a nephron with its loop of Henle. In one piece. Mounted on a green board. Height: 32 cm., width: 26 cm., depth: 7 cm., weight: 1 kg.

LS 6 · NEPHRON

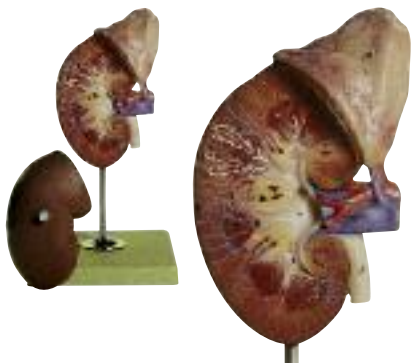
Enlarged approx. 120 times, in SOMSO-Plast®. The model shows two nephrons with little knots of kidney, renal tubules and collecting tube system. In one piece. Mounted on a green board. Height: 32 cm., width: 26 cm., depth: 4 cm., weight: 700 g.

LS 7 · GLOMERULUS

Enlarged approx. 700 times, in SOMSO-Plast®. The model shows the arteriola afferens and the arteriola efferens, the capillaries of the glomerulus, urinary pole and Bowman's capsule. In one piece. Mounted on a green board. Height: 32 cm., width: 18.5 cm., depth: 8 cm., weight: 800 g.

LS 9 · KIDNEY, NEPHRON AND GLOMERULUS

Models LS 4, LS 6 and LS 7, in SOMSO-Plast®. Mounted together on one green board. In one piece Height: 30 cm., width: 65 cm., depth: 9 cm., weight: 3 kg.



LS 1 · RIGHT KIDNEY AND ADRENAL GLAND

Natural size, in SOMSO-Plast®. The kidney separates into 2 halves longitudinally. On a stand with green base. Height: 26 cm., width: 12 cm., depth: 12 cm., weight: 400 g.



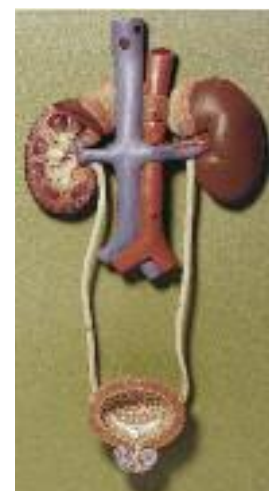
LS 5 · RIGHT KIDNEY

Enlarged approx. 3 times. In SOMSO-Plast®. Tissue of the kidney partly removed at the back; pelvis open; pyramids in relief and shown in section, as are the cortical and adipose tissue. In one piece. On a stand with green base. Height: 41 cm., width: 19 cm., depth: 18 cm., weight: 900 g.



LS 3 · URINARY ORGANS

Natural size, in SOMSO-Plast®. Kidneys, ureters, adrenal glands and bladder with prostate, as well as the large abdominal vessels shown in position. Separates into 4 parts. Mounted on a green board. Height: 41 cm., width: 28 cm., depth: 13 cm., weight: 2.6 kg.



LS 3/1 · URINARY ORGANS

Natural size, in SOMSO-Plast®. In one piece. Mounted on a green board. Height: 40 cm., width: 28 cm., depth: 10 cm., weight: 1.1 kg.

